

# \$345,990 - 1642 Sw Besra Dr, Mountain Home

MLS® #98955222

**\$345,990**

3 Bedroom, 2.00 Bathroom, 1,447 sqft

Residential on 0.15 Acres

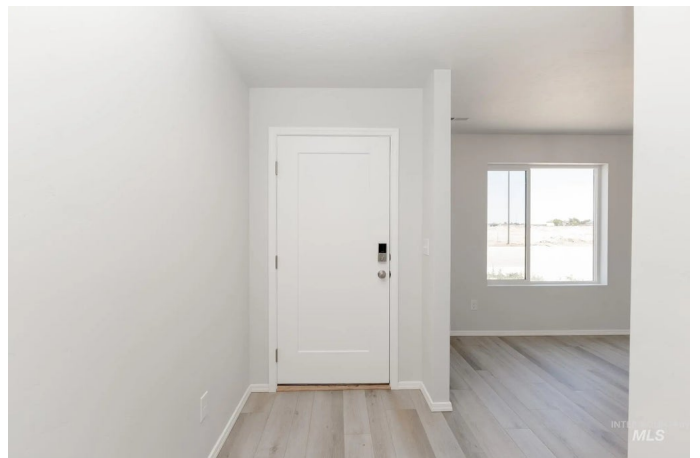
Blue Yonder, Mountain Home, ID

Fall in Love with Low Rates! Promotional rate as low as 2.99%. Ask a Sales Specialist for details! Embrace the comforts of a brand new home in Mountain Home, Idaho. The Chandler 1447 is the perfect house for anyone who is looking for a cozy, comfortable atmosphere. The primary suite is situated at the rear of the home and contains an en suite bathroom and walk-in closet, perfect for a good night's sleep or a lazy weekend morning. The highlight of the house, however, is the large living/entertaining space. With an open floor plan, you'll have plenty of room to curl up with a book, watch a movie, host a dinner party, or just relax. The kitchen is equipped with all the modern amenities to rediscover the joy of cooking. The outdoor spaces are perfect for hosting barbeques on warm summer days or just enjoying a morning cup of coffee in the fresh air. Photos are of the actual home!

Built in 2025

## Essential Information

MLS® #	98955222
Price Per SQFT	\$239
Bedrooms	3
Bathrooms	2.00
Square Footage	1,447
Acres	0.15
Year Built	2025
Type	Residential



Sub-Type	Single Family Residence
Status	Active

### Community Information

Address	1642 Sw Besra Dr
Area	Mtn Home-Elmore - 1500
Subdivision	Blue Yonder
City	Mountain Home
County	Elmore
State	ID
Zip Code	83647
Builder	CBH Homes

### Amenities

Utilities	Sewer Connected
Parking Spaces	2
Parking	Attached
# of Garages	2
Golf Course	N
Virtual Tour	<a href="https://my.matterport.com/show/?m=YCaScGA3VyU&amp;brand=0">https://my.matterport.com/show/?m=YCaScGA3VyU&amp;brand=0</a>

### Interior

Interior Features	Bath-Master, Bed-Master Main Level, Double Vanity, Walk-In Closet(s), Breakfast Bar, Pantry, Kitchen Island
Appliances	Gas Water Heater, Dishwasher, Disposal, Oven/Range Freestanding
Heating	Forced Air, Natural Gas
Cooling	Central Air
Stories	One
Primary On Main	Yes

### Exterior

Lot Description	Standard Lot 6000-9999 SF, Sidewalks, Corner Lot, Auto Sprinkler System, Full Sprinkler System
Roof	Composition

### School Information

District	Mountain Home School District #193
Elementary	Mountain Home
Middle	Mtn Home

High Mountain Home

### **Additional Information**

Date Listed	July 21st, 2025
Days on Market	70
HOA Fees	\$575
HOA Fees Freq.	Annually
New Construction	Yes
Tax Year	2024
Office	CBH Sales & Marketing Inc
Contact Info	tarak@cbhhomes.com

### **Listing Details**

Listing Office	CBH Sales & Marketing Inc
----------------	---------------------------



IDX information is provided exclusively for consumers' personal, non-commercial use, and may not be used for any purpose other than to identify prospective properties consumers may be interested in purchasing. IMLS does not assume any liability for missing or inaccurate data. Information provided by IMLS is deemed reliable but not guaranteed.

Listing information last updated on October 15th, 2025 at 12:18pm MDT