

\$799,000 - 50 Highland Road, Boise

MLS® #98955169

\$799,000

4 Bedroom, 3.00 Bathroom, 2,896 sqft

Residential on 4.62 Acres

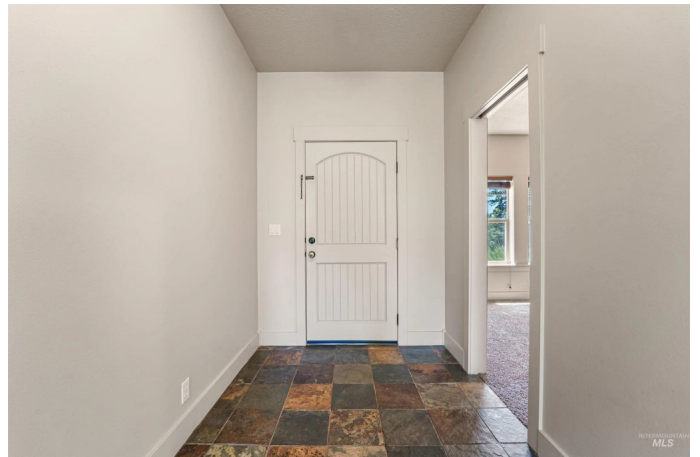
Forest Highlands (Boise County), Boise, ID

Experience peaceful mountain living just 30 minutes from downtown Boise at 50 Highland Rd. This 4-bedroom, 2.5-bath home offers nearly 2,900 sq ft of thoughtfully designed space on 4.62 private acres. Enjoy breathtaking views, frequent wildlife sightings, and the comfort of modern amenities. The main-level primary suite features a soaker tub and private deck access, while the kitchen includes double ovens, a breakfast bar, and a walk-in pantry. Entertain in the spacious great room or unwind in the dedicated theater. Additional highlights include an oversized garage, RV parking, a private well and septic system, all tucked away on a secluded private road. Built in 2004, this mountain retreat offers the perfect blend of privacy, comfort and convenience.

Built in 2004

Essential Information

MLS® #	98955169
Price Per SQFT	\$276
Bedrooms	4
Bathrooms	3.00
Square Footage	2,896
Acres	4.62
Year Built	2004
Type	Residential
Sub-Type	Single Family w/ Acreage



Status Active

Community Information

Address 50 Highland Road
Area East Boise County - 1450
Subdivision Forest Highlands (Boise County)
City Boise
County Boise
State ID
Zip Code 83716
Builder Pat Palmer Construction

Amenities

Utilities Cable Connected, Broadband Internet
Parking Spaces 3
Parking Attached, RV Access/Parking
of Garages 3
RV/Boat Parking Yes
View Yes
Golf Course N
Virtual Tour https://drive.google.com/file/d/1y_IcKj59ZtPd4eyDQ_m5NDLT4Co1hDsl/view?usp=drivesdk

Interior

Interior Features Bath-Master, Bed-Master Main Level, Den/Office, Formal Dining, Family Room, Breakfast Bar, Pantry
Appliances Dishwasher, Disposal, Double Oven, Microwave, Refrigerator, Other, Water Softener Owned
Heating Electric, Forced Air, Natural Gas, Heat Pump, Wood
Cooling Central Air
Fireplace Yes
Fireplaces Two, Gas, Wood Burning Stove
Stories Single with Below Grade
Primary On Main Yes

Exterior

Lot Description 1 - 4.99 AC, R.V. Parking, Views
Roof Composition, Architectural Style

School Information

District	Basin School District #72
Elementary	Basin
Middle	Basin
High	Idaho City

Additional Information

Date Listed	July 19th, 2025
Days on Market	3
HOA Fees	\$125
HOA Fees Freq.	Quarterly
Property Taxes	\$2,085
Tax Year	2024
Office	Silvercreek Realty Group
Contact Info	broker@silvercreekrealty.com

Listing Details

Listing Office	Silvercreek Realty Group
----------------	--------------------------



IDX information is provided exclusively for consumers' personal, non-commercial use, and may not be used for any purpose other than to identify prospective properties consumers may be interested in purchasing. IMLS does not assume any liability for missing or inaccurate data. Information provided by IMLS is deemed reliable but not guaranteed.

Listing information last updated on October 13th, 2025 at 7:48am MDT