

# \$699,900 - 6594 W Los Flores Dr, Meridian

MLS® #98955091

**\$699,900**

4 Bedroom, 3.00 Bathroom, 2,721 sqft  
Residential on 0.14 Acres

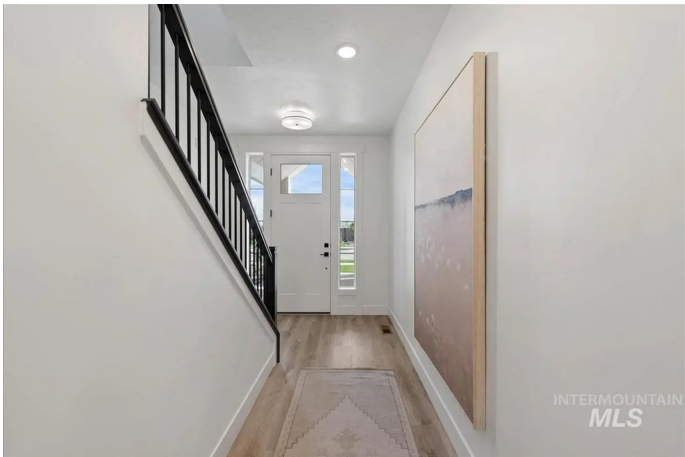
Lincoln Creek, Meridian, ID

The Jefferson by Biltmore Company LLC features a remarkable 4-car garage! Highlights of this floorplan include a bright and airy great room with stone fireplace and a stunning kitchen with quartz countertops, SS appliances with double ovens and a spacious corner pantry. The downstairs tech room creates the perfect home office. Upstairs youâ€™ll find the primary bedroom, secondary bedrooms, bonus room and laundry room. The primary bedroom with ample natural light features an ensuite with dual vanities, quartz countertops and a beautiful tiled walk-in shower. Enjoy Idahoâ€™s warm summers from the comfort of your covered patio! Lincoln Creek offers an outdoor oasis right in your back door. Lincoln Creek offers a state-of-the art clubhouse including a dog wash station, community pool, social area, pickleball court, acres of open space and much more.

Built in 2025

## Essential Information

MLS® #	98955091
Price Per SQFT	\$257
Bedrooms	4
Bathrooms	3.00
Square Footage	2,721
Acres	0.14
Year Built	2025
Type	Residential



Sub-Type	Single Family Residence
Status	Active

### Community Information

Address	6594 W Los Flores Dr
Area	Meridian NW - 1030
Subdivision	Lincoln Creek
City	Meridian
County	Ada
State	ID
Zip Code	83646
Builder	Biltmore Company LLC

### Amenities

Utilities	Sewer Connected
Parking Spaces	4
Parking	Attached, Finished Driveway
# of Garages	4
Has Pool	Yes
Pool	Community, In Ground, Pool
Golf Course	N
Virtual Tour	<a href="https://sunnyskies.media/6594-W-los-Flores-Dr/idx">https://sunnyskies.media/6594-W-los-Flores-Dr/idx</a>

### Interior

Interior Features	Bath-Master, Den/Office, Great Room, Rec/Bonus, Double Vanity, Walk-In Closet(s), Breakfast Bar, Pantry, Kitchen Island, Quartz Counters
Appliances	Gas Water Heater, ENERGY STAR Qualified Water Heater, Tank Water Heater, Dishwasher, Disposal, Double Oven, Microwave, Oven/Range Built-In, Gas Oven, Gas Range
Heating	Forced Air, Natural Gas
Cooling	Central Air
Fireplace	Yes
Fireplaces	One, Gas
Stories	Two

### Exterior

Lot Description	Standard Lot 6000-9999 SF, Irrigation Available, Sidewalks, Auto Sprinkler System, Drip Sprinkler System, Full Sprinkler System, Pressurized Irrigation Sprinkler System
-----------------	--

Roof	Composition, Architectural Style
Foundation	Crawl Space

## School Information

District	West Ada School District
Elementary	Pleasant View
Middle	Star
High	Owyhee

## Additional Information

Date Listed	July 18th, 2025
Days on Market	6
HOA Fees	\$400
HOA Fees Freq.	Semi-Annually
New Construction	Yes
Tax Year	2024
Office	Silvercreek Realty Group
Contact Info	broker@silvercreekrealty.com

## Listing Details

Listing Office	Silvercreek Realty Group
----------------	--------------------------



IDX information is provided exclusively for consumers' personal, non-commercial use, and may not be used for any purpose other than to identify prospective properties consumers may be interested in purchasing. IMLS does not assume any liability for missing or inaccurate data. Information provided by IMLS is deemed reliable but not guaranteed.

Listing information last updated on October 14th, 2025 at 1:33pm MDT