

# \$494,990 - 1015 E Perjue Basin Dr, Nampa

MLS® #98954497

**\$494,990**

4 Bedroom, 2.00 Bathroom, 2,126 sqft

Residential on 0.28 Acres

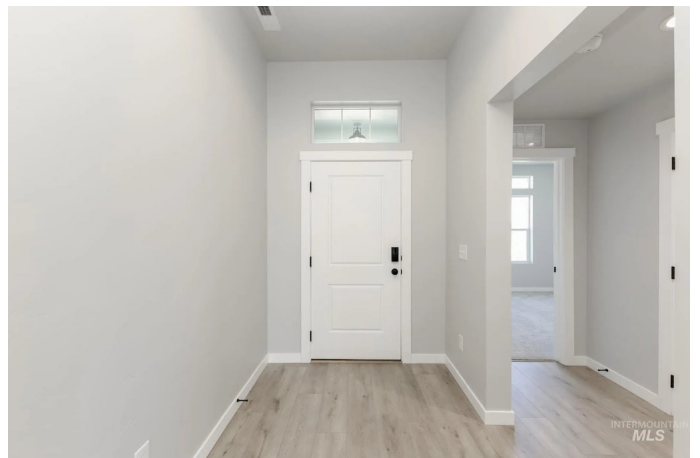
Jacks Place, Nampa, ID

Fall in Love with Low Rates! Promotional rate as low as 2.99%. Ask a Sales Specialist for details! This brand new home located in vibrant Nampa, Idaho welcomes you with open arms. The Preston 2126 is designed with easy living in mind. Enter inside to the dedicated entryway and make your way to the open living areas, where vaulted ceilings and an abundance of natural light await. The kitchen, living room, and dining room combine to make the perfect hosting space, ready for get-togethers or movie nights. The kitchen boasts upgraded finishes, including stainless steel appliances, a gas range, and stylish solid surface countertops. The primary suite is tucked towards the back of the home for peace and tranquility with its large en suite bath and walk-in closet. Two additional bedrooms share a well-appointed full bathroom. The Preston offers a perfect balance of style, function, and comfort, making it a great choice for your next home. Potential RV parking available. Photos are actual home!

Built in 2025

## Essential Information

MLS® #	98954497
Price Per SQFT	\$233
Bedrooms	4
Bathrooms	2.00
Square Footage	2,126



Acres	0.28
Year Built	2025
Type	Residential
Sub-Type	Single Family Residence
Status	Active

### Community Information

Address	1015 E Perjue Basin Dr
Area	Nampa South (86) - 1260
Subdivision	Jacks Place
City	Nampa
County	Canyon
State	ID
Zip Code	83686
Builder	CBH Homes

### Amenities

Utilities	Sewer Connected
Parking Spaces	3
Parking	Attached
# of Garages	3
Golf Course	N
Virtual Tour	<a href="https://my.matterport.com/show/?m=38HwXG3NqSk">https://my.matterport.com/show/?m=38HwXG3NqSk</a>

### Interior

Interior Features	Bath-Master, Bed-Master Main Level, Split Bedroom, Great Room, Walk-In Closet(s), Breakfast Bar, Pantry, Solid Surface Counters
Appliances	Gas Water Heater, Dishwasher, Disposal, Microwave, Oven/Range Freestanding, Gas Range
Heating	Forced Air, Natural Gas
Cooling	Central Air
Stories	One
Primary On Main	Yes

### Exterior

Lot Description	10000 SF - .49 AC, Irrigation Available, Sidewalks, Auto Sprinkler System, Partial Sprinkler System, Pressurized Irrigation Sprinkler System, Irrigation Sprinkler System
-----------------	---

### School Information

District	Nampa School District #131
Elementary	Lake Ridge
Middle	South Middle (Nampa)
High	Skyview

### **Additional Information**

Date Listed	July 14th, 2025
Days on Market	71
HOA Fees	\$600
HOA Fees Freq.	Annually
New Construction	Yes
Tax Year	2024
Office	CBH Sales & Marketing Inc
Contact Info	tarak@cbhhomes.com

### **Listing Details**

Listing Office	CBH Sales & Marketing Inc
----------------	---------------------------



IDX information is provided exclusively for consumers' personal, non-commercial use, and may not be used for any purpose other than to identify prospective properties consumers may be interested in purchasing. IMLS does not assume any liability for missing or inaccurate data. Information provided by IMLS is deemed reliable but not guaranteed.

Listing information last updated on October 12th, 2025 at 4:18am MDT