

# \$750,000 - 2155 W Waltman, Meridian

MLS® #98954047

## \$750,000

3 Bedroom, 2.00 Bathroom, 1,402 sqft

Residential on 0.97 Acres

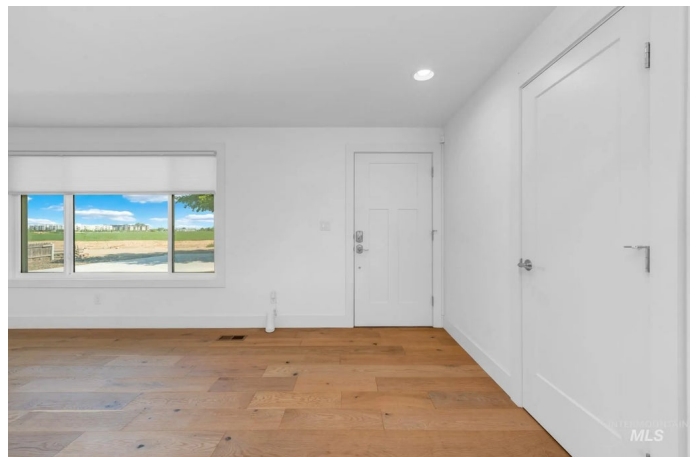
Primrose Sub, Meridian, ID

Renovated, Refreshed & Ready for You! This beautifully remodeled 3-bedroom, 2-bath home has been taken down to the studs and thoughtfully rebuiltâ€”inside and out. Situated on a full acre with no HOA, thereâ€™s room to roam, space for animals, and freedom to make it yours. Youâ€™ll love the dreamy enclosed sunroom, perfect for relaxing year-round, and the detached office out back makes working from home a breeze. Irrigation is available if you want to expand or personalize the outdoor space even further. Tucked away in an incredible Meridian location, just minutes from the Ten Mile exit, youâ€™ll have quick access to anywhere in the Valley while enjoying peaceful, open space living. Modern comfort, rural charm, and city convenienceâ€”this one truly has it all. Come see what makes this property so special!

Built in 1973

## Essential Information

MLS® #	98954047
Price Per SQFT	\$535
Bedrooms	3
Bathrooms	2.00
Square Footage	1,402
Acres	0.97
Year Built	1973
Type	Residential



Sub-Type	Single Family Residence
Status	Active

### Community Information

Address	2155 W Waltman
Area	Meridian NW - 1030
Subdivision	Primrose Sub
City	Meridian
County	Ada
State	ID
Zip Code	83642

### Amenities

Parking Spaces	2
Parking	RV Access/Parking, Finished Driveway
# of Garages	2
RV/Boat Parking	Yes
Golf Course	N

### Interior

Interior Features	Bath-Master, Bed-Master Main Level, Breakfast Bar, Pantry, Kitchen Island
Appliances	Gas Water Heater, Dishwasher, Disposal, Microwave, Oven/Range Freestanding, Refrigerator, Gas Range
Heating	Forced Air, Natural Gas
Cooling	Central Air
Fireplace	Yes
Fireplaces	One
Stories	One
Primary On Main	Yes

### Exterior

Lot Description	1/2 - .99 AC, Irrigation Available, R.V. Parking, Irrigation Sprinkler System
Roof	Composition

### School Information

District	West Ada School District
Elementary	Peregrine
Middle	Meridian Middle

High Meridian

### Additional Information

Date Listed	July 10th, 2025
Days on Market	41
Zoning	Ada County-R1
Property Taxes	\$1,259
Tax Year	2024
Structures	Barn(s), Storage Shed
Office	Boise Premier Real Estate
Contact Info	brett@boisepremier.com

### Listing Details

Listing Office Boise Premier Real Estate



IDX information is provided exclusively for consumers' personal, non-commercial use, and may not be used for any purpose other than to identify prospective properties consumers may be interested in purchasing. IMLS does not assume any liability for missing or inaccurate data. Information provided by IMLS is deemed reliable but not guaranteed.

Listing information last updated on October 15th, 2025 at 9:03am MDT