

\$369,990 - 11342 Bluefield Dr, Caldwell

MLS® #98953921

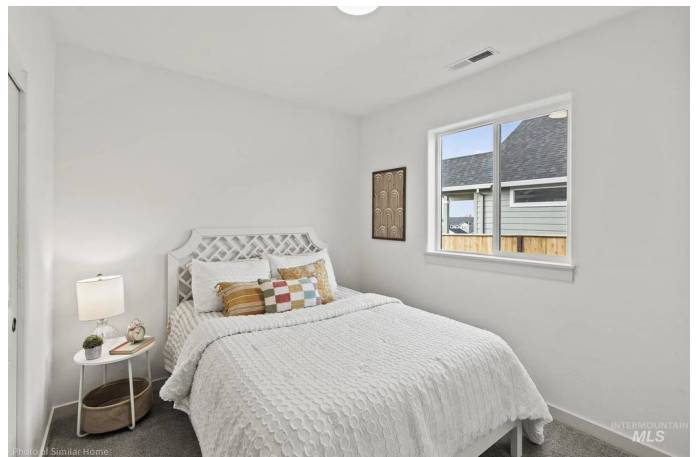
\$369,990

3 Bedroom, 2.00 Bathroom, 1,201 sqft

Residential on 0.18 Acres

Shadow Glen, Caldwell, ID

The 1,201 sq ft Canyon makes every bit of space count, offering comfort and efficiency in a single-level plan. The spacious living room flows into the dining area, while the kitchen is designed with ample counter space, quartz countertops, plentiful cabinetry, and a gas range. The private main suite features a dual vanity bath with a glass-enclosed walk-in shower and a generous walk-in closet. Two additional bedrooms share a full bath and offer large closets. Stylish LVP flooring runs throughout the main living areas with carpet in the bedrooms. Added features include a convenient garage man door and no rear neighbors for extra privacy. With smart design and modern finishes, this home is a standout choice. A fully fenced and landscaped backyard with no back neighborsâ€™ ideal for relaxation or play. ** LIMITED TIME SAVINGS! Get up to \$40,000 on this home. Offer ends 10/19/2025 OR lock in a 4.99% FHA OR a 5.25% Conventional. Contact us to learn more.**



Built in 2025

Essential Information

MLS® #	98953921
Price Per SQFT	\$308
Bedrooms	3
Bathrooms	2.00
Square Footage	1,201

Acres	0.18
Year Built	2025
Type	Residential
Sub-Type	Single Family Residence
Status	Active

Community Information

Address	11342 Bluefield Dr
Area	Caldwell NW - 1275
Subdivision	Shadow Glen
City	Caldwell
County	Canyon
State	ID
Zip Code	83605
Builder	Hayden Homes

Amenities

Utilities	Sewer Connected, Cable Connected, Broadband Internet
Parking Spaces	2
Parking	Attached
# of Garages	2
Golf Course	N

Interior

Interior Features	Bath-Master, Bed-Master Main Level, Great Room, Double Vanity, Walk-In Closet(s), Pantry, Granite Counters
Appliances	Gas Water Heater, Tank Water Heater, Dishwasher, Disposal, Microwave, Oven/Range Freestanding, Gas Range
Heating	Ceiling, Forced Air, Natural Gas
Stories	One
Primary On Main	Yes

Exterior

Lot Description	Standard Lot 6000-9999 SF, Auto Sprinkler System, Partial Sprinkler System, Pressurized Irrigation Sprinkler System
Roof	Architectural Style
Foundation	Crawl Space

School Information

District	Vallivue School District #139
----------	-------------------------------

Elementary	East Canyon
Middle	Sage Valley
High	Ridgevue

Additional Information

Date Listed	July 9th, 2025
Days on Market	93
HOA Fees	\$550
HOA Fees Freq.	Annually
New Construction	Yes
Property Taxes	\$1
Tax Year	2025
Office	New Home Star Idaho
Contact Info	pobrien@hayden-homes.com

Listing Details

Listing Office	New Home Star Idaho
----------------	---------------------



IDX information is provided exclusively for consumers' personal, non-commercial use, and may not be used for any purpose other than to identify prospective properties consumers may be interested in purchasing. IMLS does not assume any liability for missing or inaccurate data. Information provided by IMLS is deemed reliable but not guaranteed.

Listing information last updated on October 14th, 2025 at 10:03pm MDT