

\$369,990 - 13320 Excavation Dr, Caldwell

MLS® #98953638

\$369,990

3 Bedroom, 2.00 Bathroom, 1,120 sqft

Residential on 0.14 Acres

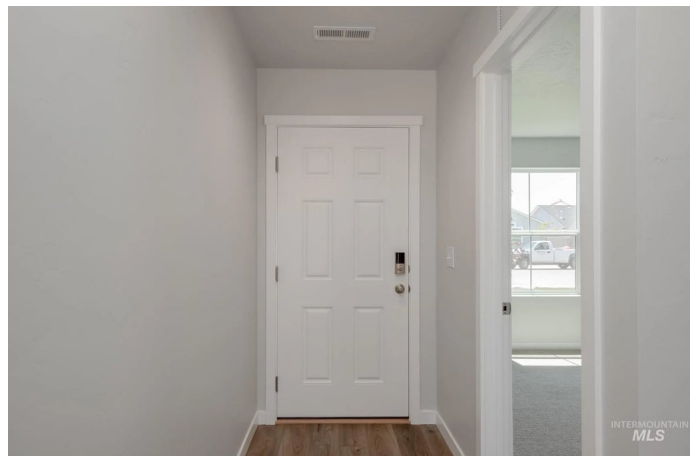
Guches Place, Caldwell, ID

Fall in Love with Low Rates! Promotional rate as low as 2.99%. Ask a Sales Specialist for details! Feel enriched in your brand new home located in Caldwell, Idaho! The Lily 1120 is adorable and bursting with charm! This thoughtful floor plan flows seamlessly through the home to deliver a cozy living experience. Three bedrooms situated around the home are designed to provide a secluded getaway to everyone. The centrally located living room, kitchen, and dining room are the heart of the home for lounging or entertaining. The spacious kitchen boasts ample counter space and modern appliances, making meal prep a breeze. The primary suite provides an en suite bathroom and large closet. Enjoy easy access to the back patio from the dining room and make the most of the pleasant Idaho weather. With its efficient design and inviting spaces, the Lily 1120 offers both comfort and functionality. This home truly offers everything you need and more. Photos are of the actual home!

Built in 2025

Essential Information

MLS® #	98953638
Price Per SQFT	\$330
Bedrooms	3
Bathrooms	2.00
Square Footage	1,120



Acres	0.14
Year Built	2025
Type	Residential
Sub-Type	Single Family Residence
Status	Active

Community Information

Address	13320 Excavation Dr
Area	Caldwell SW - 1280
Subdivision	Guches Place
City	Caldwell
County	Canyon
State	ID
Zip Code	83607
Builder	CBH Homes

Amenities

Utilities	Sewer Connected
Parking Spaces	2
Parking	Attached
# of Garages	2
Golf Course	N
Virtual Tour	https://my.matterport.com/show/?m=SPSVoo9Bwxq&mls=1

Interior

Interior Features	Bath-Master, Bed-Master Main Level, Split Bedroom, Double Vanity, Breakfast Bar, Pantry, Kitchen Island
Appliances	Gas Water Heater, Dishwasher, Disposal, Microwave, Oven/Range Freestanding
Heating	Forced Air, Natural Gas
Cooling	Central Air
Stories	One
Primary On Main	Yes

Exterior

Lot Description	Standard Lot 6000-9999 SF, Irrigation Available, Sidewalks, Auto Sprinkler System, Partial Sprinkler System, Pressurized Irrigation Sprinkler System
Roof	Composition

School Information

District	Vallivue School District #139
Elementary	Central Canyon
Middle	Vallivue Middle
High	Vallivue

Additional Information

Date Listed	July 7th, 2025
Days on Market	70
HOA Fees	\$500
HOA Fees Freq.	Annually
New Construction	Yes
Tax Year	2024
Office	CBH Sales & Marketing Inc
Contact Info	tarak@cbhhomes.com

Listing Details

Listing Office	CBH Sales & Marketing Inc
----------------	---------------------------



IDX information is provided exclusively for consumers' personal, non-commercial use, and may not be used for any purpose other than to identify prospective properties consumers may be interested in purchasing. IMLS does not assume any liability for missing or inaccurate data. Information provided by IMLS is deemed reliable but not guaranteed.

Listing information last updated on October 15th, 2025 at 11:03am MDT