

\$539,990 - 5371 E Burnte Peak St, Nampa

MLS® #98953604

\$539,990

4 Bedroom, 3.00 Bathroom, 2,332 sqft

Residential on 0.20 Acres

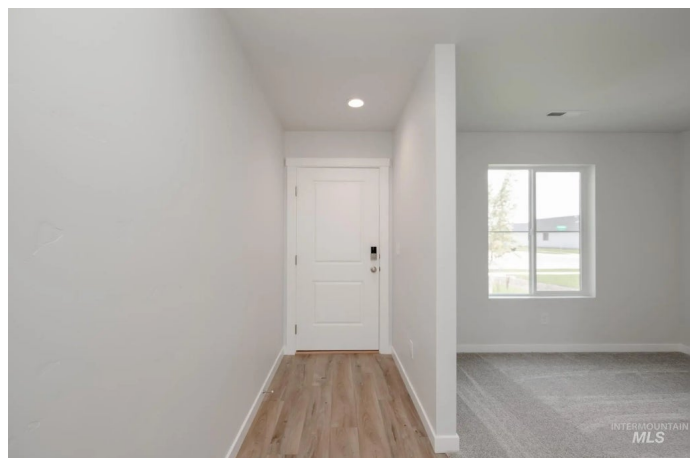
Spring Hollow Ranch, Nampa, ID

Fall in Love with Low Rates! Promotional rate as low as 2.99%. Ask a Sales Specialist for details! This brand new home located in vibrant Nampa, Idaho welcomes you with open arms. You are mere moments away from calling the Lennox 2332 your dream come true. Inside this two-story beauty, you will find the primary suite, 3 additional bedrooms, and a sunny loft upstairs, your perfect escape at the end of the day. Downstairs, you have all the space you need with the open living room, dining, and kitchen, not to mention a spacious flex room just ready for your library or office. The kitchen boasts upgraded finishes, including stainless steel appliances, a gas range, and stylish solid surface countertops. Enjoy seamless indoor-outdoor living with easy access to the patio, ideal for entertaining or relaxing. The well-designed laundry area provides convenient storage and organization. Potential RV parking available. Photos are of the actual home!

Built in 2025

Essential Information

MLS® #	98953604
Price Per SQFT	\$232
Bedrooms	4
Bathrooms	3.00
Square Footage	2,332
Acres	0.20



Year Built	2025
Type	Residential
Sub-Type	Single Family Residence
Status	Active

Community Information

Address	5371 E Burnte Peak St
Area	Nampa NE (87) - 1250
Subdivision	Spring Hollow Ranch
City	Nampa
County	Canyon
State	ID
Zip Code	83687
Builder	CBH Homes

Amenities

Utilities	Sewer Connected
Parking Spaces	3
Parking	Attached
# of Garages	3
Golf Course	N
Virtual Tour	https://my.matterport.com/show/?m=pTw7WhM2uyD&mls=1

Interior

Interior Features	Bath-Master, Split Bedroom, Family Room, Great Room, Double Vanity, Walk-In Closet(s), Loft, Breakfast Bar, Pantry, Kitchen Island, Solid Surface Counters
Appliances	Gas Water Heater, Dishwasher, Disposal, Microwave, Oven/Range Freestanding, Gas Range
Heating	Forced Air, Natural Gas
Cooling	Central Air
Stories	Two

Exterior

Lot Description	Standard Lot 6000-9999 SF, Irrigation Available, Sidewalks, Auto Sprinkler System, Partial Sprinkler System, Pressurized Irrigation Sprinkler System, Irrigation Sprinkler System
Roof	Composition

School Information

District	Vallivue School District #139
Elementary	East Canyon
Middle	Sage Valley
High	Ridgevue

Additional Information

Date Listed	July 7th, 2025
Days on Market	78
HOA Fees	\$650
HOA Fees Freq.	Annually
New Construction	Yes
Tax Year	2024
Office	CBH Sales & Marketing Inc
Contact Info	tarak@cbhhomes.com

Listing Details

Listing Office	CBH Sales & Marketing Inc
----------------	---------------------------



IDX information is provided exclusively for consumers' personal, non-commercial use, and may not be used for any purpose other than to identify prospective properties consumers may be interested in purchasing. IMLS does not assume any liability for missing or inaccurate data. Information provided by IMLS is deemed reliable but not guaranteed.

Listing information last updated on October 12th, 2025 at 2:03am MDT