

\$699,000 - 35 Wapiti Ct., Garden Valley

MLS® #98953007

\$699,000

4 Bedroom, 3.00 Bathroom, 2,792 sqft

Residential on 0.16 Acres

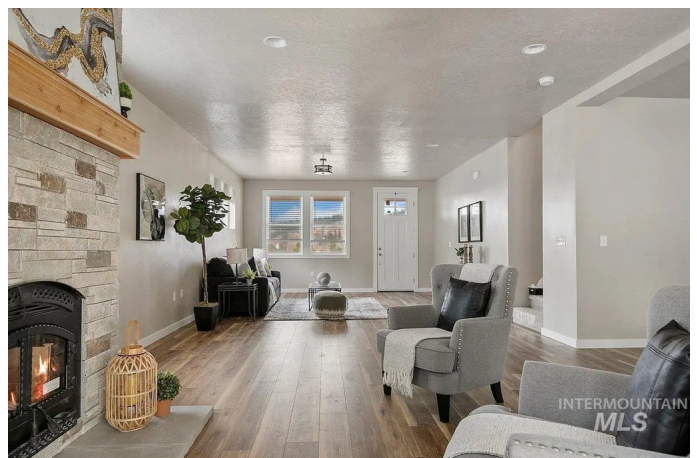
South Fork Landing, Garden Valley, ID

Freshly painted 4-bedroom, 2.5-bathroom home in the picturesque South Fork Landing community offers a prime opportunity for mountain living, currently priced below appraisal. It provides breathtaking views of the mountains and valley, with the added benefit of a large common area out back. The interior boasts a large open floor plan, ideal for entertaining, and features a cozy wood-burning stone fireplace perfect for chilly evenings. For convenience, all bedrooms are located on the upper level, along with the laundry room, which includes a brand new Samsung washer and dryer. The master bedroom is a true sanctuary, offering stunning views, a spacious walk-in closet, and an en-suite bathroom complete with a standalone tub, dual vanities, and a shower. Outdoor enthusiasts will find endless opportunities for recreation right at their doorstep. The property provides access to a 2-mile river walking trail and fishing ponds. Seller offering an interest rate buydown for the first year.

Built in 2024

Essential Information

MLS® #	98953007
Price Per SQFT	\$250
Bedrooms	4
Bathrooms	3.00
Square Footage	2,792



Acres	0.16
Year Built	2024
Type	Residential
Sub-Type	Single Family Residence
Status	Active

Community Information

Address	35 Wapiti Ct.
Area	Garden Valley - 1425
Subdivision	South Fork Landing
City	Garden Valley
County	Boise
State	ID
Zip Code	83622

Amenities

Utilities	Sewer Connected
Parking Spaces	2
Parking	Attached
# of Garages	2
View	Yes
Golf Course	N
Virtual Tour	https://tour.metareal.com/apps/player?asset=3518b35c-7a15-4210-b0f2-d5db8ee58e80&position=-4.13x1.73y9.00z&rotation=0.00x-1259.29y0.00z

Interior

Interior Features	Double Vanity, Walk-In Closet(s), Breakfast Bar, Pantry, Kitchen Island, Granite Counters
Appliances	Electric Water Heater, Dishwasher, Disposal, Microwave, Oven/Range Freestanding
Heating	Electric, Forced Air
Cooling	Central Air
Fireplace	Yes
Fireplaces	One
Stories	Two

Exterior

Lot Description	Standard Lot 6000-9999 SF, Irrigation Available, Views, Pressurized Irrigation Sprinkler System
-----------------	---

Roof	Composition
Foundation	Crawl Space

School Information

District	Garden Valley School District #71
Elementary	Garden Vly
Middle	Garden Valley
High	Garden Valley

Additional Information

Date Listed	June 30th, 2025
Days on Market	103
HOA Fees	\$271
HOA Fees Freq.	Quarterly
New Construction	Yes
Property Taxes	\$250
Tax Year	2024
Office	Homes of Idaho
Contact Info	info@homesofidaho.com

Listing Details

Listing Office	Homes of Idaho
----------------	----------------



IDX information is provided exclusively for consumers' personal, non-commercial use, and may not be used for any purpose other than to identify prospective properties consumers may be interested in purchasing. IMLS does not assume any liability for missing or inaccurate data. Information provided by IMLS is deemed reliable but not guaranteed.

Listing information last updated on October 12th, 2025 at 2:48am MDT