

\$622,050 - 5560 E Bridal Veil Falls Dr, Nampa

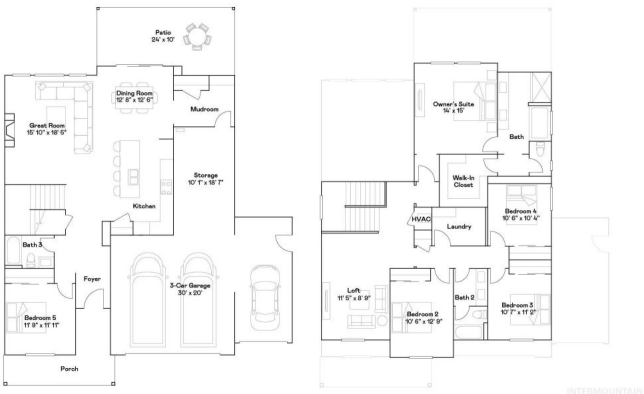
MLS® #98952940

\$622,050

5 Bedroom, 3.00 Bathroom, 2,800 sqft
Residential on 0.28 Acres

Terrace Falls, Nampa, ID

The All-Star Series sparkles with attention to every detail and feature in this luxury series. The raised 9-foot ceilings downstairs feel grand as you enjoy your great room with fireplace and 6â€™x8â€™ sliding glass patio door out to your covered patio. The top-of-the-line kitchen has stainless steel appliances and features double ovens, gas cooktop, pantry, pull out recycle and trash bins, and gourmet island prewired for two pendant lights for you to add your personal touch. The kitchen and baths have quartz countertops, and youâ€™ll find Luxury vinyl plank flooring in the main living area, kitchen, baths, and laundry room. Other thoughtful designs include 6â€™ baseboards, garage service door, full gutters, tankless water heater, and so much more. Terrace Falls offers room to roam around, with large estate size homesites, tot lot, and green spaces. Situated in southeast Nampa, you can see the mountains and open farmland, as you relax in your new luxury filled home.



Built in 2025

Essential Information

MLS® #	98952940
Price Per SQFT	\$222
Bedrooms	5
Bathrooms	3.00
Square Footage	2,800

Acres	0.28
Year Built	2025
Type	Residential
Sub-Type	Single Family Residence
Status	Active

Community Information

Address	5560 E Bridal Veil Falls Dr
Area	Nampa South (86) - 1260
Subdivision	Terrace Falls
City	Nampa
County	Canyon
State	ID
Zip Code	83686
Builder	Lennar

Amenities

Utilities	Sewer Connected, Cable Connected, Broadband Internet
Parking Spaces	3
Parking	Attached
# of Garages	3
Golf Course	N

Interior

Interior Features	Bath-Master, Double Vanity, Walk-In Closet(s), Breakfast Bar, Pantry, Kitchen Island, Quartz Counters
Appliances	Tank Water Heater, Dishwasher, Disposal, Microwave, Oven/Range Freestanding
Heating	Forced Air
Cooling	Central Air
Fireplace	Yes
Fireplaces	Gas, Insert
Stories	Two

Exterior

Lot Description	10000 SF - .49 AC, Auto Sprinkler System, Pressurized Irrigation Sprinkler System
Roof	Architectural Style
Foundation	Crawl Space

School Information

District	Nampa School District #131
Elementary	Endeavor Nampa
Middle	East Valley Mid
High	Columbia

Additional Information

Date Listed	June 29th, 2025
Days on Market	107
HOA Fees	\$135
HOA Fees Freq.	Quarterly
New Construction	Yes
Tax Year	2024
Office	Fathom Realty
Contact Info	kim@idaholifehomes.com

Listing Details

Listing Office	Fathom Realty
----------------	---------------



IDX information is provided exclusively for consumers' personal, non-commercial use, and may not be used for any purpose other than to identify prospective properties consumers may be interested in purchasing. IMLS does not assume any liability for missing or inaccurate data. Information provided by IMLS is deemed reliable but not guaranteed.

Listing information last updated on October 14th, 2025 at 9:03pm MDT