

# \$469,000 - 5911 Clark, Nampa

MLS® #98952767

## \$469,000

3 Bedroom, 2.00 Bathroom, 1,772 sqft  
Residential on 0.34 Acres

Clark Theurer, Nampa, ID

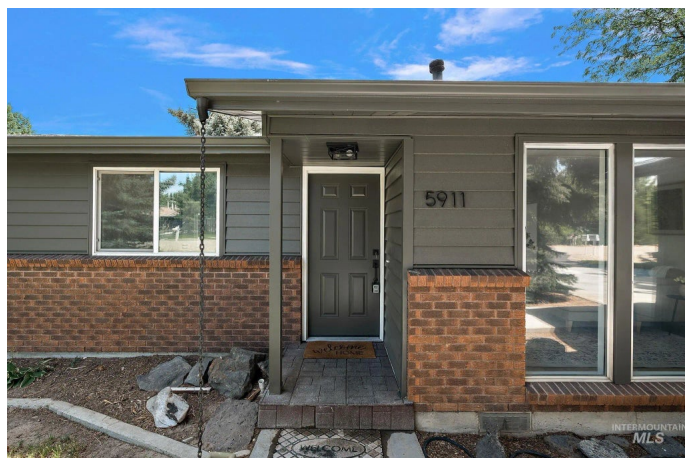
Beautifully updated 3-bedroom, 2-bathroom home offering 1,772 square feet of modern living space on a generous 0.34-acre lot. Nestled in a quiet and established neighborhood, this home combines the charm of a classic Idaho residence with the style and efficiency of a full renovation. Step inside to an open-concept layout filled with natural light, brand-new LVP flooring, fresh interior and exterior paint, and stylish fixtures throughout. The stunning kitchen boasts new stainless steel appliances, quartz countertops, tile backsplash, and custom cabinetry—perfect for entertaining or cooking your favorite meals.

Retreat to the spacious master suite featuring a fully updated en-suite bathroom and ample closet space. Two additional bedrooms and a renovated full guest bath offer comfort and versatility for family or guests. Outside, enjoy the expansive backyard ideal for gardening, play, or future outdoor living projects—complete with mature trees and plenty of privacy. A large drive

Built in 1980

## Essential Information

MLS® #	98952767
Price Per SQFT	\$265
Bedrooms	3
Bathrooms	2.00
Square Footage	1,772



Acres	0.34
Year Built	1980
Type	Residential
Sub-Type	Single Family Residence
Status	Active

### **Community Information**

Address	5911 Clark
Area	Nampa NE (87) - 1250
Subdivision	Clark Theurer
City	Nampa
County	Canyon
State	ID
Zip Code	83687

### **Amenities**

Utilities	Sewer Connected
Parking Spaces	2
Parking	Attached
# of Garages	2
Golf Course	N

### **Interior**

Interior Features	Bed-Master Main Level, Double Vanity, Breakfast Bar, Pantry, Quartz Counters
Appliances	Dishwasher, Disposal, Microwave, Oven/Range Freestanding, Refrigerator, Washer
Heating	Forced Air
Cooling	Central Air
Stories	One
Primary On Main	Yes

### **Exterior**

Lot Description	10000 SF - .49 AC
Roof	Composition
Foundation	Crawl Space

### **School Information**

District	Nampa School District #131
----------	----------------------------

Elementary	Endeavor Nampa
Middle	South Middle (Nampa)
High	Nampa

**Additional Information**

Date Listed	June 27th, 2025
Days on Market	102
Property Taxes	\$874
Tax Year	2024
Office	Silvercreek Realty Group
Contact Info	broker@silvercreekrealty.com

**Listing Details**

Listing Office	Silvercreek Realty Group
----------------	--------------------------



IDX information is provided exclusively for consumers' personal, non-commercial use, and may not be used for any purpose other than to identify prospective properties consumers may be interested in purchasing. IMLS does not assume any liability for missing or inaccurate data. Information provided by IMLS is deemed reliable but not guaranteed.

Listing information last updated on October 12th, 2025 at 2:03am MDT