

\$1,175,000 - 5209 W Strant Steet, Eagle

MLS® #98952758

\$1,175,000

4 Bedroom, 4.00 Bathroom, 3,203 sqft

Residential on 0.34 Acres

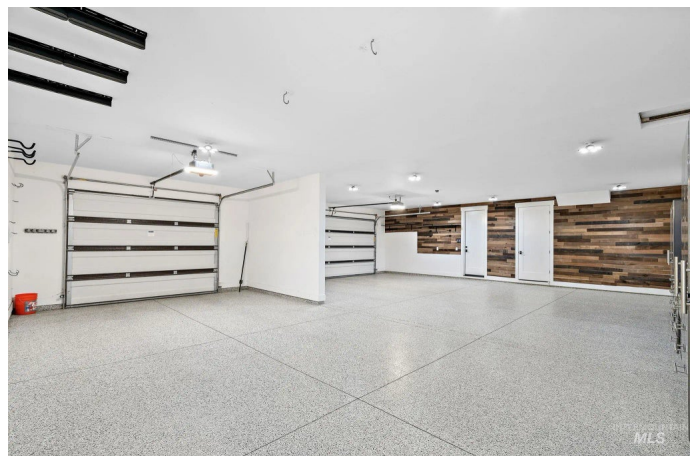
Homestead, Eagle, ID

Welcome home to this well designed single-level with upper bonus secondary living suite in coveted Homestead Subdivision in the sought after community of Eagle. En trend designer finishes compliment this 4 bed, 3.5 bath home that has an additional main level bonus room with access to the covered patio. Coffered ceilings with wood beams, built in cabinetry, & sliding glass doors throughout the home add to the elegant open floorplan, perfect for gatherings with family & friends. Additional features include custom cabinets, quartz countertops, a walk-in pantry, stainless steel Bosch double ovens & a 36-in Thermador cooktop. Vaulted ceilings in every bedroom add to the grand presence! Beauty accommodates a wealth of activity on this over 1/3 acre private property, close to community pools, parks & walking paths. Additional storage in the 1,278 sf garage; plenty of room for addition outdoor toys & hobbies. Homestead is located in the heart of Eagle, close to downtown, shopping & dining & the Boise River Greenbelt.

Built in 2022

Essential Information

MLS® #	98952758
Price Per SQFT	\$367
Bedrooms	4
Bathrooms	4.00



Square Footage	3,203
Acres	0.34
Year Built	2022
Type	Residential
Sub-Type	Single Family Residence
Status	Active

Community Information

Address	5209 W Strant Steet
Area	Eagle - 0900
Subdivision	Homestead
City	Eagle
County	Ada
State	ID
Zip Code	83616
Builder	Alturas

Amenities

Utilities	Sewer Connected, Cable Connected, Broadband Internet
Parking Spaces	3
Parking	Attached, Finished Driveway
# of Garages	3
Has Pool	Yes
Pool	Community
Golf Course	N

Interior

Interior Features	Bath-Master, Bed-Master Main Level, Family Room, Great Room, Rec/Bonus, Double Vanity, Walk-In Closet(s), Breakfast Bar, Pantry, Kitchen Island, Quartz Counters
Appliances	Gas Water Heater, Dishwasher, Disposal, Double Oven, Microwave, Oven/Range Built-In
Heating	Forced Air, Natural Gas
Cooling	Central Air
Fireplace	Yes
Fireplaces	Gas
Stories	Two
Primary On Main	Yes

Exterior

Lot Description	10000 SF - .49 AC, Dog Run, Garden, Sidewalks, Auto Sprinkler System, Full Sprinkler System, Pressurized Irrigation Sprinkler System
Roof	Composition
Foundation	Crawl Space

School Information

District	West Ada School District
Elementary	Eagle Hills
Middle	Star
High	Eagle

Additional Information

Date Listed	June 27th, 2025
Days on Market	89
HOA Fees	\$316
HOA Fees Freq.	Quarterly
Property Taxes	\$3,508
Tax Year	2024
Office	Silvercreek Realty Group
Contact Info	broker@silvercreekrealty.com

Listing Details

Listing Office	Silvercreek Realty Group
----------------	--------------------------



IDX information is provided exclusively for consumers' personal, non-commercial use, and may not be used for any purpose other than to identify prospective properties consumers may be interested in purchasing. IMLS does not assume any liability for missing or inaccurate data. Information provided by IMLS is deemed reliable but not guaranteed.

Listing information last updated on October 14th, 2025 at 12:04pm MDT