

\$535,990 - 5357 E Burnte Peak St, Nampa

MLS® #98952504

\$535,990

5 Bedroom, 3.00 Bathroom, 2,636 sqft

Residential on 0.20 Acres

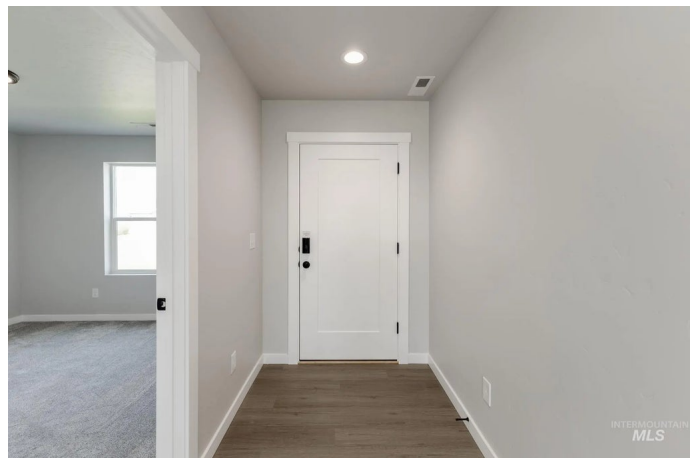
Spring Hollow Ranch, Nampa, ID

Fall in Love with Low Rates! Promotional rate as low as 2.99%. Ask a Sales Specialist for details! Feel enriched in your brand new home located in Nampa, Idaho! Achieve it all in the Amelia 2636! Rediscover the benefits of quality time in the open great room. The main level is ideal for hosting gatherings or a cozy night in, and the patio is perfectly situated to blend outdoor unwinding and indoor relaxation. A main level bedroom is ideal for guests or a home office. The kitchen comes with stainless steel appliances and stylish solid surface countertops, adding both functionality and aesthetics to the kitchen. Escape upstairs to find the other bedrooms positioned cleverly around a large loft. The primary suite contains an en suite bathroom and a truly impressive walk-in closet. With a thoughtful floor plan, unbeatable square footage, and an abundance of flexible living spaces, the Amelia makes it easy to love where you live. Potential RV parking available. Photos are of the actual home!

Built in 2025

Essential Information

MLS® #	98952504
Price Per SQFT	\$203
Bedrooms	5
Bathrooms	3.00
Square Footage	2,636



Acres	0.20
Year Built	2025
Type	Residential
Sub-Type	Single Family Residence
Status	Active

Community Information

Address	5357 E Burnte Peak St
Area	Nampa NE (87) - 1250
Subdivision	Spring Hollow Ranch
City	Nampa
County	Canyon
State	ID
Zip Code	83687
Builder	CBH Homes

Amenities

Utilities	Sewer Connected
Parking Spaces	3
Parking	Attached
# of Garages	3
Golf Course	N
Virtual Tour	https://my.matterport.com/show/?m=cTUDedcvRmA&mls=1

Interior

Interior Features	Bath-Master, Great Room, Double Vanity, Walk-In Closet(s), Loft, Breakfast Bar, Pantry, Kitchen Island, Solid Surface Counters
Appliances	Gas Water Heater, Dishwasher, Disposal, Oven/Range Freestanding
Heating	Forced Air, Natural Gas
Cooling	Central Air
Stories	Two

Exterior

Lot Description	Standard Lot 6000-9999 SF, Sidewalks, Auto Sprinkler System, Partial Sprinkler System, Pressurized Irrigation Sprinkler System, Irrigation Sprinkler System
Roof	Composition

School Information

District	Vallivue School District #139
----------	-------------------------------

Elementary	East Canyon
Middle	Sage Valley
High	Ridgevue

Additional Information

Date Listed	June 26th, 2025
Days on Market	89
HOA Fees	\$650
HOA Fees Freq.	Annually
New Construction	Yes
Tax Year	2024
Office	CBH Sales & Marketing Inc
Contact Info	tarak@cbhhomes.com

Listing Details

Listing Office	CBH Sales & Marketing Inc
----------------	---------------------------



IDX information is provided exclusively for consumers' personal, non-commercial use, and may not be used for any purpose other than to identify prospective properties consumers may be interested in purchasing. IMLS does not assume any liability for missing or inaccurate data. Information provided by IMLS is deemed reliable but not guaranteed.

Listing information last updated on October 12th, 2025 at 2:18am MDT