

# \$470,000 - 3636 W Palouse St, Boise

MLS® #98952219

**\$470,000**

4 Bedroom, 2.00 Bathroom, 1,650 sqft

Residential on 0.14 Acres

Steins Add, Boise, ID

Situated on an expansive corner lot in Boise's highly sought-after Bench neighborhood, this beautifully updated home offers a prime location just minutes from downtown, Boise State University, and the airport. The stylish interior features gorgeous new flooring and a gourmet kitchen adorned with stunning granite countertopsâ€”perfect for the culinary enthusiast. Step outside to enjoy evenings around the cozy gas firepit. With its unique appeal and unbeatable location. Donâ€™t miss this rare opportunityâ€”schedule your showing today!

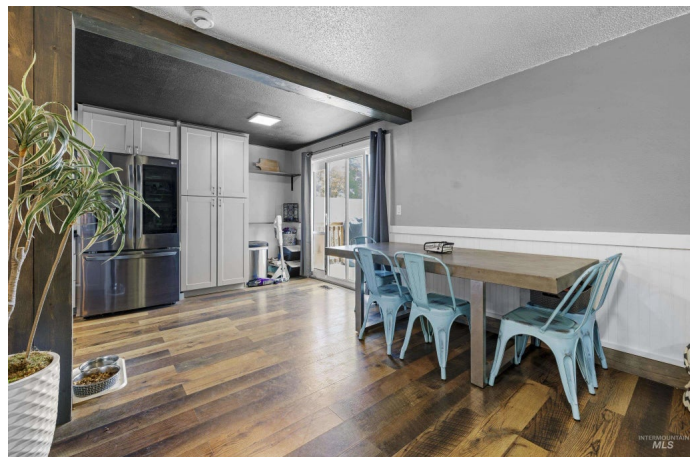
Built in 1972

## Essential Information

MLS® #	98952219
Price Per SQFT	\$285
Bedrooms	4
Bathrooms	2.00
Square Footage	1,650
Acres	0.14
Year Built	1972
Type	Residential
Sub-Type	Single Family Residence
Status	Active

## Community Information

Address	3636 W Palouse St
Area	Boise Bench - 0400



Subdivision	Steins Add
City	Boise
County	Ada
State	ID
Zip Code	83705

### Amenities

Utilities	Sewer Connected
Parking	Other, Alley Access, Finished Driveway
Golf Course	N

### Interior

Interior Features	Bath-Master, Great Room, Quartz Counters
Appliances	Gas Water Heater, Dishwasher, Disposal, Oven/Range Built-In, Refrigerator
Heating	Forced Air, Natural Gas
Cooling	Central Air
Stories	Split Entry

### Exterior

Lot Description	Standard Lot 6000-9999 SF, Garden, Corner Lot
Roof	Composition

### School Information

District	Boise School District #1
Elementary	Whitney
Middle	South (Boise)
High	Borah

### Additional Information

Date Listed	June 24th, 2025
Days on Market	99
Property Taxes	\$1,770
Tax Year	2024
Office	ENGEL & VÃ–LKERS Boise
Contact Info	charles.sweet@engelvoelkers.com

### Listing Details

Listing Office	ENGEL & VÃ–LKERS Boise
----------------	------------------------



IDX information is provided exclusively for consumers' personal, non-commercial use, and may not be used for any purpose other than to identify prospective properties consumers may be interested in purchasing. IMLS does not assume any liability for missing or inaccurate data. Information provided by IMLS is deemed reliable but not guaranteed.

Listing information last updated on October 14th, 2025 at 10:33am MDT