

# \$564,990 - 919 E Perjue Basin Dr, Nampa

MLS® #98952203

**\$564,990**

4 Bedroom, 3.00 Bathroom, 2,543 sqft

Residential on 0.28 Acres

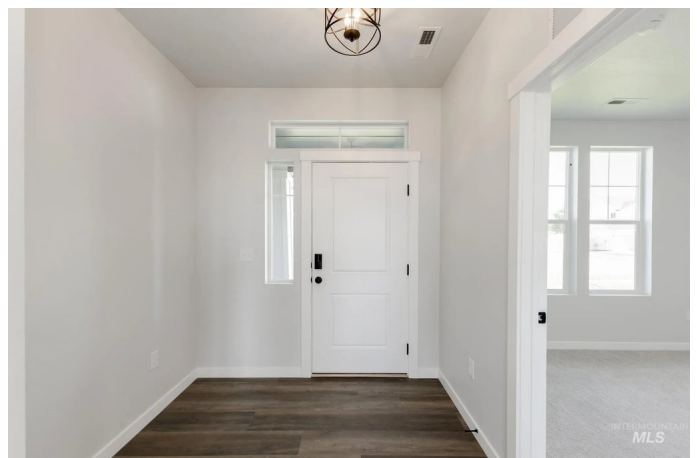
Jacks Place, Nampa, ID

Fall in Love with Low Rates! Promotional rate as low as 2.99%. Ask a Sales Specialist for details! Feel enriched in your brand new home located in Nampa, Idaho! Feel love at first sight with the Glenlake 2543. The dedicated entryway welcomes you to the main level where you will find a bedroom, half bath, and a phenomenal great room. 9ft ceilings and scores of windows throughout the main level let the fresh air in! The kitchen boasts upgraded finishes, including stainless steel appliances, a gas range, and stylish solid surface countertops. The adjacent living and dining rooms ensure that no one misses a moment of the action. Explore the upstairs to enjoy the flexible loft space or unwind in the other 3 bedrooms. The primary suite beckons with its en suite bath, dual vanities, and separate soaker tub. An additional tandem bay in the attached garage is rife with the potential to maximize storage space, park an additional vehicle, or create a home gym. Potential RV parking available. Photos are of the actual home!

Built in 2025

## Essential Information

MLS® #	98952203
Price Per SQFT	\$222
Bedrooms	4
Bathrooms	3.00



Square Footage	2,543
Acres	0.28
Year Built	2025
Type	Residential
Sub-Type	Single Family Residence
Status	Active

### Community Information

Address	919 E Perjue Basin Dr
Area	Nampa South (86) - 1260
Subdivision	Jacks Place
City	Nampa
County	Canyon
State	ID
Zip Code	83686
Builder	CBH Homes

### Amenities

Utilities	Sewer Connected
Parking Spaces	4
Parking	Attached, Tandem
# of Garages	4
Golf Course	N
Virtual Tour	<a href="https://my.matterport.com/show/?m=2Bu33kBUFyJ&amp;mls=1">https://my.matterport.com/show/?m=2Bu33kBUFyJ&amp;mls=1</a>

### Interior

Interior Features	Bath-Master, Great Room, Double Vanity, Breakfast Bar, Pantry, Kitchen Island, Solid Surface Counters
Appliances	Gas Water Heater, Dishwasher, Disposal, Microwave, Oven/Range Freestanding, Gas Range
Heating	Forced Air, Natural Gas
Cooling	Central Air
Stories	Two

### Exterior

Lot Description	10000 SF - .49 AC, Sidewalks, Pressurized Irrigation Sprinkler System
Roof	Composition

### School Information

District	Nampa School District #131
Elementary	Lake Ridge
Middle	South Middle (Nampa)
High	Skyview

### **Additional Information**

Date Listed	June 24th, 2025
Days on Market	91
HOA Fees	\$600
HOA Fees Freq.	Annually
New Construction	Yes
Tax Year	2024
Office	CBH Sales & Marketing Inc
Contact Info	tarak@cbhhomes.com

### **Listing Details**

Listing Office	CBH Sales & Marketing Inc
----------------	---------------------------



IDX information is provided exclusively for consumers' personal, non-commercial use, and may not be used for any purpose other than to identify prospective properties consumers may be interested in purchasing. IMLS does not assume any liability for missing or inaccurate data. Information provided by IMLS is deemed reliable but not guaranteed.

Listing information last updated on October 14th, 2025 at 10:33am MDT