

# \$114,900 - 914 N Midland Blvd #trlr 31, Nampa

MLS® #98950625

**\$114,900**

3 Bedroom, 2.00 Bathroom, 1,680 sqft  
Residential

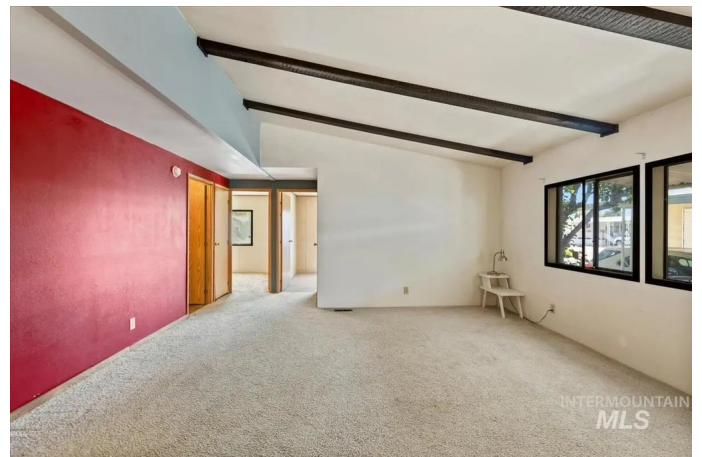
Gem Park Sub, Nampa, ID

Welcome to this generously sized manufactured home located in a peaceful 55+ community. This home features a spacious layout with large bedrooms, an abundance of closet and storage space, and vaulted ceilings with exposed beams that add character and charm to the great room. Natural light pours in through numerous windows, creating a warm and inviting atmosphere throughout. The dining area includes a built-in hutch, perfect for displaying your favorite pieces, while the spacious laundry room offers built-in cabinetry for added convenience. While the home has a dated style, it's full of potential and ready for your personal touches to make it your own. Outside, you'll find a large carport for covered parking and a roomy shed for extra storage or hobbies. Don't miss this opportunity to create your ideal living space in a welcoming, age-qualified community!

Built in 1983

## Essential Information

MLS® #	98950625
Price Per SQFT	\$68
Bedrooms	3
Bathrooms	2.00
Square Footage	1,680
Year Built	1983
Type	Residential
Sub-Type	Mobile/Manu Rented Lot



Status	Active
--------	--------

### Community Information

Address	914 N Midland Blvd #trlr 31
Area	Nampa NW (51) - 1270
Subdivision	Gem Park Sub
City	Nampa
County	Canyon
State	ID
Zip Code	83651

### Amenities

Utilities	Sewer Connected, Cable Connected
Parking Spaces	2
Parking	Carport
Golf Course	N
Virtual Tour	<a href="https://sunnyskies.media/914-N-Midland-Blvd/idx">https://sunnyskies.media/914-N-Midland-Blvd/idx</a>

### Interior

Interior Features	Bath-Master, Bed-Master Main Level, Family Room, Walk-In Closet(s), Breakfast Bar
Appliances	Electric Water Heater, Dishwasher, Microwave, Oven/Range Built-In
Heating	Forced Air, Natural Gas
Cooling	Central Air
Fireplace	Yes
Fireplaces	One
Stories	One
Primary On Main	Yes

### Exterior

Lot Description	Auto Sprinkler System
Roof	Composition

### School Information

District	Nampa School District #131
Elementary	Over 55 Commun
Middle	Over 55 Commun
High	Over 55 Commun

### Additional Information

Date Listed	June 11th, 2025
Days on Market	118
Property Taxes	\$146
Tax Year	2024
Structures	Storage Shed
Office	Silvercreek Realty Group
Contact Info	broker@silvercreekrealty.com

### **Listing Details**

Listing Office	Silvercreek Realty Group
----------------	--------------------------



IDX information is provided exclusively for consumers' personal, non-commercial use, and may not be used for any purpose other than to identify prospective properties consumers may be interested in purchasing. IMLS does not assume any liability for missing or inaccurate data. Information provided by IMLS is deemed reliable but not guaranteed.

Listing information last updated on October 12th, 2025 at 12:03am MDT