

# \$924,900 - 7564 W Flathead Lake Street, Eagle

MLS® #98950307

**\$924,900**

3 Bedroom, 3.00 Bathroom, 2,909 sqft  
Residential on 0.25 Acres

Eagle Ridge, Eagle, ID

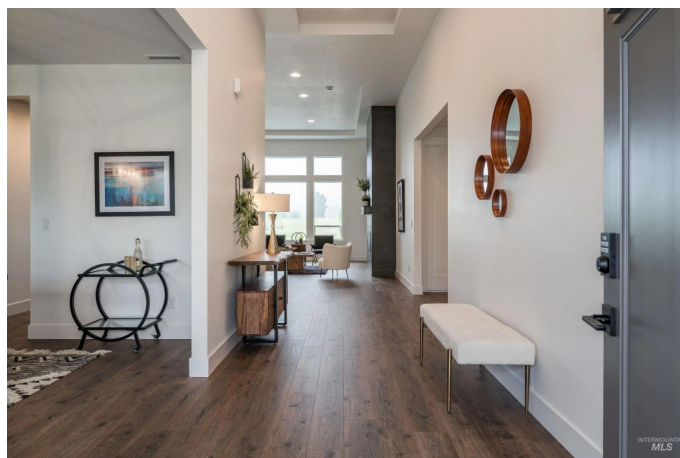
4.875% FIXED 30-year CONVENTIONAL financing incentive on select Eagle Ridge homesâ€™truly a permanent loan (not a buydown, not FHA). To be built - 6 to 7 months from contract to keys. Discover the Shasta, a well appointed single level home designed by Pacific Lifestyle homes, offering 2909 sqft with a 3-car garage. This home sits on a desirable 1/4 acre lot with a North facing backyard. This plan can accommodate 3-4 bedrooms and 2.5-3 bathrooms, giving you the flexibility to customize your living space to suit your lifestyle. The modern farmhouse exterior includes a charming covered front porch, while inside you'll find a bright great room with 12' ceilings complimented by large windows & a stunning floor to ceiling tiled gas fireplace. The gourmet kitchen features full heights cabinets, slab quartz countertops, large kitchen island, Bosch appliances, a walk-in pantry and a butler's pantry that leads to the formal dining room. Enjoy the large den or convert it to a 4th bedroom. The private primary suite offers a sleek and functional tiled zero entry curbless shower & a large walk-in closet. Community pool, clubhouse, pickle ball, dog park. Model Home now open! Located at 7875 W Flathead Lake St, Eagle, ID 83616. Open Wednesday - Sunday 11am - 6pm.

Built in 2025

## Essential Information



2909 Shasta



MLS® #	98950307
Price Per SQFT	\$318
Bedrooms	3
Bathrooms	3.00
Square Footage	2,909
Acres	0.25
Year Built	2025
Type	Residential
Sub-Type	Single Family Residence
Status	Active

### Community Information

Address	7564 W Flathead Lake Street
Area	Eagle - 0900
Subdivision	Eagle Ridge
City	Eagle
County	Ada
State	ID
Zip Code	83616
Builder	Pacific Lifestyle Homes

### Amenities

Utilities	Sewer Connected
Parking Spaces	3
# of Garages	3
Has Pool	Yes
Pool	Community, Pool
Golf Course	N
Virtual Tour	<a href="https://www.pacificlifestylehomes.com/new-homes/id/eagle/eagle-ridge/s-hasta/#virtualTour">https://www.pacificlifestylehomes.com/new-homes/id/eagle/eagle-ridge/s-hasta/#virtualTour</a>

### Interior

Interior Features	Bath-Master, Bed-Master Main Level, Den/Office, Formal Dining, Great Room, Double Vanity, Walk-In Closet(s), Kitchen Island, Quartz Counters
Appliances	Gas Water Heater, Tank Water Heater, Dishwasher, Microwave, Gas Range
Heating	Forced Air, Natural Gas
Cooling	Central Air

Fireplace	Yes
Fireplaces	Gas
Stories	One
Primary On Main	Yes

## Exterior

Lot Description	10000 SF - .49 AC, Auto Sprinkler System, Pressurized Irrigation Sprinkler System
Roof	Architectural Style
Foundation	Crawl Space

## School Information

District	West Ada School District
Elementary	Eagle Hills
Middle	Star
High	Eagle

## Additional Information

Date Listed	June 9th, 2025
Days on Market	121
HOA Fees	\$200
HOA Fees Freq.	Quarterly
New Construction	Yes
Tax Year	2024
Office	The Agency Boise
Contact Info	opheliehomes@gmail.com

## Listing Details

Listing Office	The Agency Boise
----------------	------------------



IDX information is provided exclusively for consumers' personal, non-commercial use, and may not be used for any purpose other than to identify prospective properties consumers may be interested in purchasing. IMLS does not assume any liability for missing or inaccurate data. Information provided by IMLS is deemed reliable but not guaranteed.

Listing information last updated on October 14th, 2025 at 10:33pm MDT