

\$385,750 - 4240 W Cirrus Ln, Eagle

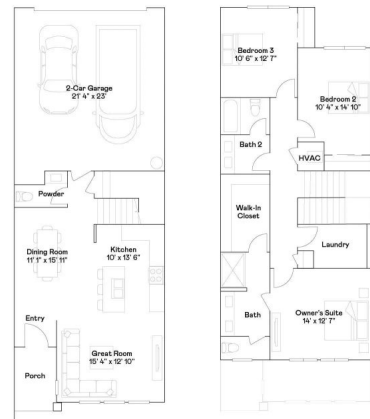
MLS® #98950264

\$385,750

3 Bedroom, 3.00 Bathroom, 1,689 sqft
Residential on 0.04 Acres

Skyview, Eagle, ID

Welcome to Skyview. This luxurious two-story townhome is designed for modern living. The open-concept first floor seamlessly blends the kitchen, living, and dining areas, creating a perfect space for both relaxation and multitasking. Lennar's Signature "Everythingâ€™s Included" features include a washer & dryer, refrigerator, quartz countertops, window blinds and more. The kitchen and baths have shaker style cabinets with quartz countertops and luxury vinyl plank flooring. Upstairs, the home offers three spacious bedrooms, including a luxurious ownerâ€™s suite with a spa-inspired bathroom and spacious walk-in closet. A two-car garage adds convenience and ample storage. Located in Skyview in Eagle, ID, offers an exclusive collection of move-in-ready townhomes designed with comfort, convenience, with a hint of luxury. Experience the ease of a low-maintenance lifestyle, along with a vibrant community atmosphere complemented by amenities such as a tot lot, swimming pool, and pool house creating the perfect setting for both relaxation and recreation.



Built in 2025

Essential Information

MLS® # 98950264

Price Per SQFT \$228

Bedrooms	3
Bathrooms	3.00
Square Footage	1,689
Acres	0.04
Year Built	2025
Type	Residential
Sub-Type	Townhouse
Status	Active

Community Information

Address	4240 W Cirrus Ln
Area	Eagle - 0900
Subdivision	Skyview
City	Eagle
County	Ada
State	ID
Zip Code	83616
Builder	Lennar

Amenities

Utilities	Sewer Connected, Cable Connected, Broadband Internet
Parking Spaces	2
Parking	Attached
# of Garages	2
Has Pool	Yes
Pool	Community, In Ground, Pool
Golf Course	N

Interior

Interior Features	Bath-Master, Great Room, Double Vanity, Walk-In Closet(s), Loft, Breakfast Bar, Pantry, Kitchen Island, Quartz Counters
Appliances	Dishwasher, Disposal, Microwave, Oven/Range Freestanding
Heating	Forced Air
Cooling	Central Air
Stories	Two

Exterior

Lot Description	Sm Lot 5999 SF, Auto Sprinkler System, Full Sprinkler System, Pressurized Irrigation Sprinkler System
-----------------	-------------------------------------------------------------------------------------------------------

Roof Architectural Style

School Information

District West Ada School District
Elementary Eagle
Middle Eagle Middle
High Eagle

Additional Information

Date Listed June 7th, 2025
Days on Market 109
HOA Fees \$489
HOA Fees Freq. Quarterly
New Construction Yes
Tax Year 2024
Office Fathom Realty
Contact Info kim@idaholifehomes.com

Listing Details

Listing Office Fathom Realty



IDX information is provided exclusively for consumers' personal, non-commercial use, and may not be used for any purpose other than to identify prospective properties consumers may be interested in purchasing. IMLS does not assume any liability for missing or inaccurate data. Information provided by IMLS is deemed reliable but not guaranteed.

Listing information last updated on October 14th, 2025 at 5:18pm MDT