

\$429,900 - 16346 Silver Creek Ave, Caldwell

MLS® #98950182

\$429,900

3 Bedroom, 3.00 Bathroom, 2,299 sqft

Residential on 0.18 Acres

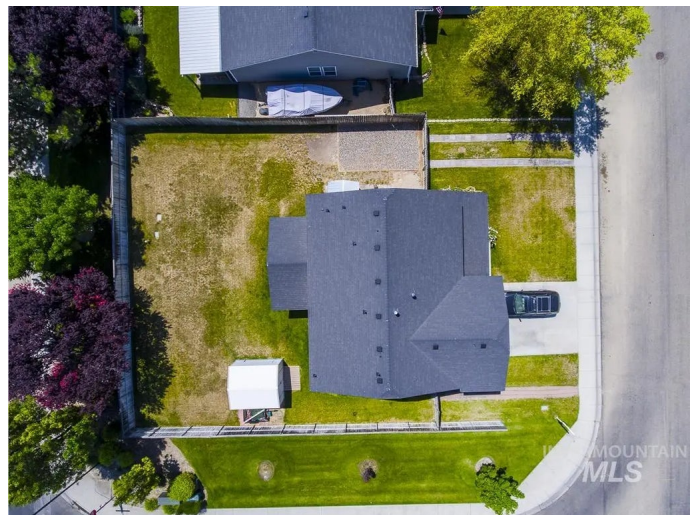
Kingsview Estates, Caldwell, ID

****PRICE REDUCTION**** Caldwell Gem:
Room to Grow & Space to Roam! Spacious 3bd/2.5ba 2299 sqft Caldwell Home boasts a Large Yard, Bonus Room, & Large Living Room! The whole family can enjoy the park across the street or cozy up to the pellet stove downstairs. Also, everyone will love the convenience of dual climate control in your home. The backyard features a covered patio and RV parking, perfect for gatherings. Some other notable features include a 4-5 year old roof, a 10 x 12 shed with double doors and power, which has the option of being a he/she shed, central vacuum system, huge pantry, and installed security system. You also have the convenience of getting to the freeway (both Caldwell and Nampa side) within minutes as well as enjoying the convenience of having shopping, restaurants, Lake Lowell, as well as Brother's Park and the YMCA right at your back yard! This home is definitely a must-see!!!! Don't Miss Out â€” Contact Us Now!!!!

Built in 2007

Essential Information

MLS® #	98950182
Price Per SQFT	\$187
Bedrooms	3
Bathrooms	3.00
Square Footage	2,299



Acres	0.18
Year Built	2007
Type	Residential
Sub-Type	Single Family Residence
Status	Active

Community Information

Address	16346 Silver Creek Ave
Area	Caldwell SW - 1280
Subdivision	Kingsview Estates
City	Caldwell
County	Canyon
State	ID
Zip Code	83607

Amenities

Utilities	Cable Connected
Parking Spaces	2
Parking	Attached, RV Access/Parking
# of Garages	2
RV/Boat Parking	Yes
Golf Course	N

Interior

Interior Features	Bath-Master, Family Room, Great Room, Walk-In Closet(s), Breakfast Bar, Pantry, Laminate Counters
Appliances	Gas Water Heater, Dishwasher, Disposal, Microwave, Oven/Range Freestanding, Water Softener Owned
Heating	Forced Air, Natural Gas
Cooling	Central Air
Fireplace	Yes
Fireplaces	Pellet Stove
Stories	Two

Exterior

Lot Description	Standard Lot 6000-9999 SF, R.V. Parking, Corner Lot
Roof	Composition

School Information

District	Vallivue School District #139
Elementary	Central Canyon
Middle	Vallivue Middle
High	Vallivue

Additional Information

Date Listed	June 6th, 2025
Days on Market	56
HOA Fees	\$350
HOA Fees Freq.	Annually
Property Taxes	\$1,744
Tax Year	2024
Structures	Storage Shed
Office	Silvercreek Realty Group
Contact Info	broker@silvercreekrealty.com

Listing Details

Listing Office	Silvercreek Realty Group
----------------	--------------------------



IDX information is provided exclusively for consumers' personal, non-commercial use, and may not be used for any purpose other than to identify prospective properties consumers may be interested in purchasing. IMLS does not assume any liability for missing or inaccurate data. Information provided by IMLS is deemed reliable but not guaranteed.

Listing information last updated on October 15th, 2025 at 7:03am MDT