

\$1,049,000 - 7373 W Feather Edge, Eagle

MLS® #98949962

\$1,049,000

3 Bedroom, 3.00 Bathroom, 2,145 sqft

Residential on 0.23 Acres

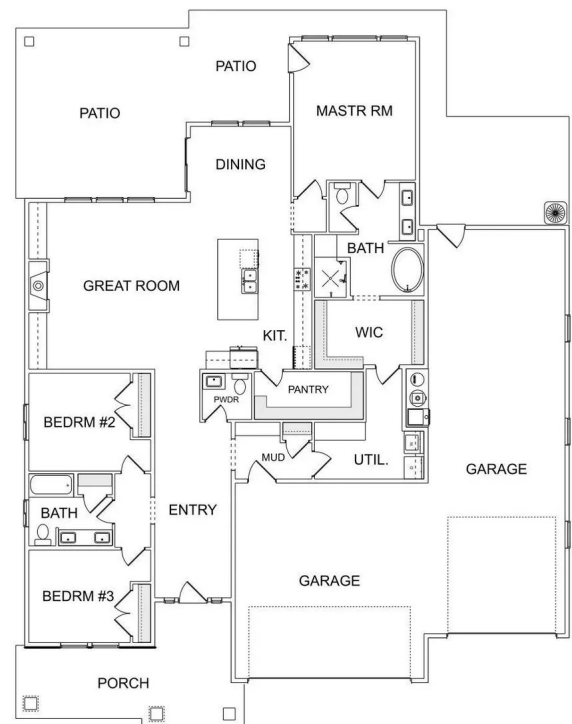
Millstone Farm, Eagle, ID

Luxurious Custom Home by Solitude Homes in Millstone Farms, one of Eagle's Most Desirable New Communities! Situated on a generous quarter-acre corner lot, this stunning residence showcases Solitude's signature craftsmanship where quality, comfort, & timeless design converge. This thoughtfully designed floor plan offers soaring ceilings, a wall of windows that flood the space w/natural light, & elegant millwork paired w/upscale finishes throughout. Chef's kitchen is a dream, boasting a large island, custom cabinetry, premium appliances, & spacious walk-in pantry. Luxurious primary suite feels like a private retreat, complete with a spa-style en suite and an oversized walk-in closet. Highlights include designer lighting, beautiful millwork, & a roomy RV bay. Millstone offers over 23 acres of open space, walking paths, a community pool, & sports courts, including bocce ball, tennis, pickleball, basketball, & scenic ponds. A perfect blend of elegance, function & lifestyle. More lots available.

Built in 2025

Essential Information

MLS® #	98949962
Price Per SQFT	\$489
Bedrooms	3
Bathrooms	3.00
Square Footage	2,145



MAIN FLOOR
2145 sq. ft.

INTERMOUNTAIN



Acres	0.23
Year Built	2025
Type	Residential
Sub-Type	Single Family Residence
Status	Active

Community Information

Address	7373 W Feather Edge
Area	Eagle - 0900
Subdivision	Millstone Farm
City	Eagle
County	Ada
State	ID
Zip Code	83616
Builder	Solitude Homes Inc

Amenities

Utilities	Sewer Connected
Parking Spaces	4
Parking	Attached, RV Access/Parking
# of Garages	4
Has Pool	Yes
Pool	Community
RV/Boat Parking	Yes
Golf Course	N

Interior

Interior Features	Bed-Master Main Level, Den/Office, Double Vanity, Walk-In Closet(s), Pantry
Appliances	Dishwasher, Disposal, Double Oven, Microwave, Gas Oven, Gas Range
Heating	Forced Air, Natural Gas
Cooling	Central Air
Fireplace	Yes
Fireplaces	Gas, Insert
Stories	One
Primary On Main	Yes

Exterior

Lot Description	10000 SF - .49 AC, Auto Sprinkler System, Full Sprinkler System,
-----------------	--

Pressurized Irrigation Sprinkler System

Roof Composition

Foundation Crawl Space

School Information

District West Ada School District

Elementary Eagle

Middle Star

High Eagle

Additional Information

Date Listed June 5th, 2025

Days on Market 86

HOA Fees Freq. Quarterly

New Construction Yes

Tax Year 2025

Office Silvercreek Realty Group

Contact Info broker@silvercreekrealty.com

Listing Details

Listing Office Silvercreek Realty Group



IDX information is provided exclusively for consumers' personal, non-commercial use, and may not be used for any purpose other than to identify prospective properties consumers may be interested in purchasing. IMLS does not assume any liability for missing or inaccurate data. Information provided by IMLS is deemed reliable but not guaranteed.

Listing information last updated on October 14th, 2025 at 11:18pm MDT