

\$649,000 - 14525 Woosley, Nampa

MLS® #98949885

\$649,000

3 Bedroom, 3.00 Bathroom, 2,184 sqft
Residential on 1.07 Acres

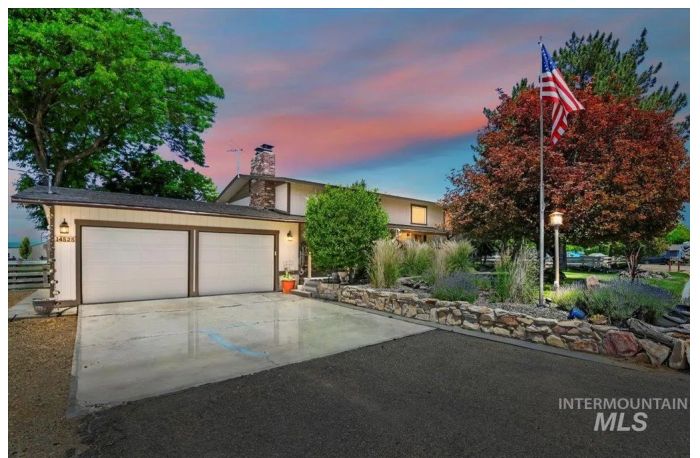
Parkcrest Acres, Nampa, ID

\$50,000 PRICE REDUCTION Want space? ??This home sits on a spacious 1+ acre lot in Nampa! Want to start a hobby farm lifestyle and self-sufficiency? ?? There is space for trailers, RVs, plus room for a garden, and chickens and more, and XL Shop to work in! Enjoy entertaining inside and out? ?? With mature landscaping, a large, charming deck overlooking the gorgeous backyard, a welcoming covered porch, and inside having generous living areas filled with natural light, a cozy fireplace, and a kitchen with an abundance of counter space and plenty of cabinet spaceâ€”perfect for big gatherings or quiet peaceful mornings with your chickens! Need space for guests or family members to move-in? ??The lower level offers flexible living space with rustic wood-beam ceilings, giving you room for a game room, media den, or multi-generational living setup. This home CHECKS ALL THE BOXES ?? and is ready for you to move in! A must see!

Built in 1973

Essential Information

MLS® #	98949885
Price Per SQFT	\$297
Bedrooms	3
Bathrooms	3.00
Square Footage	2,184
Acres	1.07



Year Built	1973
Type	Residential
Sub-Type	Single Family w/ Acreage
Status	Price Change

Community Information

Address	14525 Woosley
Area	Nampa NE (87) - 1250
Subdivision	Parkcrest Acres
City	Nampa
County	Canyon
State	ID
Zip Code	83651

Amenities

Parking Spaces	2
Parking	Attached
# of Garages	2
Waterfront	Irrigation Canal/Ditch
Golf Course	N
Virtual Tour	https://360idaho.tf.media/x2262080

Interior

Interior Features	Bath-Master, Split Bedroom, Family Room, Two Kitchens, Tile Counters
Appliances	Electric Water Heater, Dishwasher, Disposal, Oven/Range Freestanding
Heating	Baseboard, Electric, Ductless/Mini Split
Cooling	Ductless/Mini Split
Fireplace	Yes
Fireplaces	Two, Pellet Stove, Wood Burning Stove
Stories	Split Entry

Exterior

Lot Description	1 - 4.99 AC, Irrigation Available, Chickens, Corner Lot, Manual Sprinkler System, Pressurized Irrigation Sprinkler System
-----------------	---

School Information

District	Nampa School District #131
Elementary	Roosevelt
Middle	Lone Star

High Nampa

Additional Information

Date Listed	June 5th, 2025
Days on Market	128
Property Taxes	\$2,145
Tax Year	2024
Structures	Storage Shed
Office	Team Realty
Contact Info	jim@teamrealtyofidaho.com

Listing Details

Listing Office Team Realty



IDX information is provided exclusively for consumers' personal, non-commercial use, and may not be used for any purpose other than to identify prospective properties consumers may be interested in purchasing. IMLS does not assume any liability for missing or inaccurate data. Information provided by IMLS is deemed reliable but not guaranteed.

Listing information last updated on October 11th, 2025 at 10:03pm MDT