

\$422,400 - 1722 N Timothy Ln #32/1, Boise

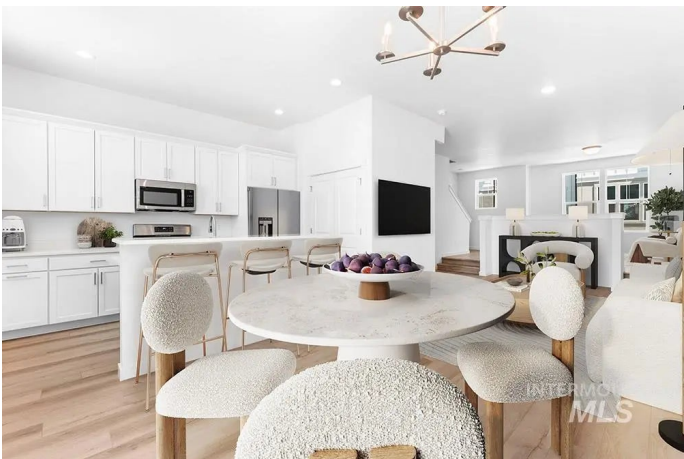
MLS® #98949852

\$422,400

4 Bedroom, 4.00 Bathroom, 1,909 sqft
Residential on 0.02 Acres

Forester, Boise, ID

Discover the perfect blend of style, function, and convenience in this modern 3-story townhome, designed for an on-the-go lifestyle. With direct access to The Village at Meridian and downtown Boise, youâ€™re never far from premier shopping, dining, and entertainment options in both Meridian and Boise. Featuring sleek, durable LVP flooring and an open-concept layout, this home offers low-maintenance living without sacrificing comfort. The ground-level bedroom is ideal for remote work, a private guest suite, or a cozy office space. The second floor opens up to a spacious, light-filled greatroom, an open-air balcony perfect for morning coffee or evening unwinding, and a contemporary kitchen outfitted with quartz countertops, SS appliances, and elegant neutral finishes. Retreat to the owner's suite, a true sanctuary boasting a generous walk-in closet and a master bath with dual vanities and a walk-in shower. Enjoy the benefits of zero maintenance living with access to a private community park! Photos Similar.



Built in 2025

Essential Information

MLS® #	98949852
Price Per SQFT	\$221
Bedrooms	4
Bathrooms	4.00

Square Footage	1,909
Acres	0.02
Year Built	2025
Type	Residential
Sub-Type	Townhouse
Status	Active

Community Information

Address	1722 N Timathy Ln #32/1
Area	Boise W-Garden City - 0650
Subdivision	Forester
City	Boise
County	Ada
State	ID
Zip Code	83713
Builder	Holmes Homes

Amenities

Utilities	Sewer Connected, Broadband Internet
Parking Spaces	2
Parking	Attached
# of Garages	2
View	Yes
Golf Course	N

Interior

Interior Features	Bath-Master, Bed-Master Main Level, Great Room, Two Master Bedrooms, Double Vanity, Walk-In Closet(s), Breakfast Bar, Pantry, Kitchen Island, Stone Counters
Appliances	Gas Water Heater, Dishwasher, Disposal, Microwave, Oven/Range Freestanding, Gas Range
Heating	Forced Air, Natural Gas
Cooling	Central Air
Stories	Tri-Level
Two Primary Bedrooms	Yes

Exterior

Lot Description	Sm Lot 5999 SF, Bus on City Route, Sidewalks, Views, Auto Sprinkler System, Full Sprinkler System, Irrigation Sprinkler System
-----------------	--

Roof	Architectural Style
Foundation	Crawl Space, Slab

School Information

District	West Ada School District
Elementary	Ustick
Middle	Lewis and Clark
High	Centennial

Additional Information

Date Listed	June 5th, 2025
Days on Market	3
Zoning	Mx-3
HOA Fees	\$135
HOA Fees Freq.	Monthly
New Construction	Yes
Property Taxes	\$727
Tax Year	2024
Office	Amherst Madison
Contact Info	mike@amherst-madison.com

Listing Details

Listing Office	Amherst Madison
----------------	-----------------



IDX information is provided exclusively for consumers' personal, non-commercial use, and may not be used for any purpose other than to identify prospective properties consumers may be interested in purchasing. IMLS does not assume any liability for missing or inaccurate data. Information provided by IMLS is deemed reliable but not guaranteed.

Listing information last updated on October 14th, 2025 at 12:33pm MDT