

# \$599,990 - 4285 E Woodmurra St, Meridian

MLS® #98949124

**\$599,990**

4 Bedroom, 2.00 Bathroom, 2,023 sqft

Residential on 0.14 Acres

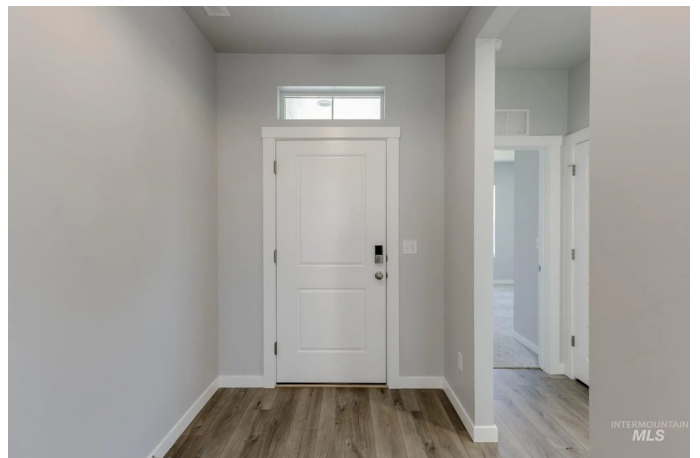
Centerville, Meridian, ID

Fall in Love with Low Rates! Promotional rate as low as 2.99%. Feel enriched in your brand new home located in Meridian, Idaho! The search for an expansive single-level 4-bedroom home ends with the Kobi 2023. The 4 spacious bedrooms are cleverly situated throughout the home to create a secluded space for everyone. The entryway leads to the heart of the home, where 9ft ceilings throughout and a well-appointed kitchen includes stainless steel appliances, a gas range, and stylish solid surface countertops. The primary suite is tucked at the rear corner of the home and equipped with a luxurious en suite bath and walk-in closet. With additional storage options throughout and a convenient laundry room nearby, organization is a breeze. Enjoy seamless indoor-outdoor living with easy access to the patio, perfect for entertaining or relaxing. Photos are of the actual home!

Built in 2025

## Essential Information

MLS® #	98949124
Price Per SQFT	\$297
Bedrooms	4
Bathrooms	2.00
Square Footage	2,023
Acres	0.14
Year Built	2025
Type	Residential



Sub-Type	Single Family Residence
Status	Active

### Community Information

Address	4285 E Woodmurra St
Area	Boise SW-Meridian - 0550
Subdivision	Centerville
City	Meridian
County	Ada
State	ID
Zip Code	83642
Builder	CBH Homes

### Amenities

Utilities	Sewer Connected
Parking Spaces	3
Parking	Attached
# of Garages	3
Golf Course	N

### Interior

Interior Features	Bath-Master, Great Room, Double Vanity, Walk-In Closet(s), Loft, Breakfast Bar, Pantry, Kitchen Island, Solid Surface Counters
Appliances	Gas Water Heater, Dishwasher, Disposal, Microwave, Oven/Range Freestanding, Gas Range
Heating	Forced Air, Natural Gas
Cooling	Central Air
Stories	One
Primary On Main	Yes

### Exterior

Lot Description	Standard Lot 6000-9999 SF, Irrigation Available, Sidewalks, Auto Sprinkler System, Partial Sprinkler System, Pressurized Irrigation Sprinkler System
Roof	Composition

### School Information

District	West Ada School District
Elementary	Hillsdale
Middle	Lake Hazel

High Mountain View

**Additional Information**

Date Listed	May 30th, 2025
Days on Market	136
HOA Fees	\$650
HOA Fees Freq.	Annually
New Construction	Yes
Tax Year	2024
Office	CBH Sales & Marketing Inc
Contact Info	tarak@cbhhomes.com

**Listing Details**

Listing Office	CBH Sales & Marketing Inc
----------------	---------------------------



IDX information is provided exclusively for consumers' personal, non-commercial use, and may not be used for any purpose other than to identify prospective properties consumers may be interested in purchasing. IMLS does not assume any liability for missing or inaccurate data. Information provided by IMLS is deemed reliable but not guaranteed.

Listing information last updated on October 14th, 2025 at 6:03am MDT