

\$1,175,000 - 296 N Clearpoint Way, Eagle

MLS® #98948833

\$1,175,000

5 Bedroom, 4.00 Bathroom, 3,702 sqft

Residential on 0.40 Acres

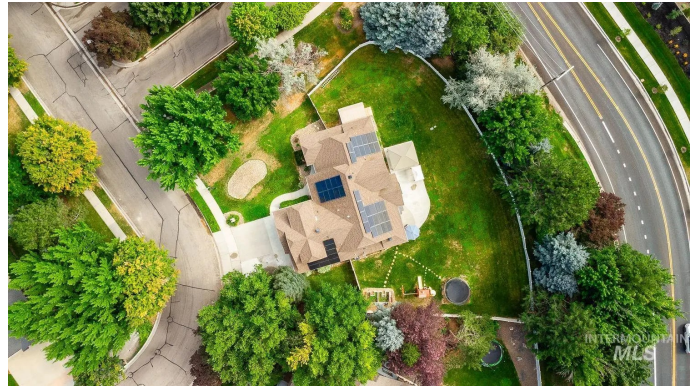
Countryside Est, Eagle, ID

Imagine a sprawling open-concept home that seamlessly blends indoor and outdoor living. The centerpiece of this entertainer's paradise is a stunning kitchen equipped with granite countertops, bar seating, and ample counter space for meal prep. Adjacent to the kitchen is the dining area that could accommodate large gatherings. Flowing from the dining area and kitchen is a cozy yet sophisticated living room, complete with oversized windows and a beautiful fireplace, creating an inviting atmosphere for conversation or relaxation. The French doors open up to a beautifully landscaped backyard, which boasts a patio equipped with a gazebo & hot tub, a trampoline, and plenty of space for entertaining. The home also includes a dedicated movie room equipped with movie theater-like seating, Atmos sound system, and even a popcorn machine for movie nights. An owned solar system is included as well. This home truly offers everything needed for hosting memorable gatherings with family and friends. Solar is owned!!!

Built in 2003

Essential Information

MLS® #	98948833
Price Per SQFT	\$317
Bedrooms	5
Bathrooms	4.00



Square Footage	3,702
Acres	0.40
Year Built	2003
Type	Residential
Sub-Type	Single Family Residence
Status	Active

Community Information

Address	296 N Clearpoint Way
Area	Eagle - 0900
Subdivision	Countryside Est
City	Eagle
County	Ada
State	ID
Zip Code	83616

Amenities

Utilities	Sewer Connected, Cable Connected, Broadband Internet
Parking Spaces	3
Parking	Attached
# of Garages	3
View	Yes
Golf Course	N

Interior

Interior Features	Bath-Master, Bed-Master Main Level, Guest Room, Split Bedroom, Den/Office, Family Room, Rec/Bonus, Double Vanity, Walk-In Closet(s), Breakfast Bar, Pantry, Granite Counters
Appliances	Gas Water Heater, Dishwasher, Disposal, Microwave, Oven/Range Freestanding
Heating	Forced Air, Natural Gas
Cooling	Central Air
Fireplace	Yes
Fireplaces	One, Gas, Insert
Stories	Two
Primary On Main	Yes

Exterior

Lot Description	10000 SF - .49 AC, Garden, Irrigation Available, Sidewalks, Views,
-----------------	--

Corner Lot, Auto Sprinkler System, Full Sprinkler System, Pressurized Irrigation Sprinkler System

Roof Composition

School Information

District	West Ada School District
Elementary	Eagle
Middle	Eagle Middle
High	Eagle

Additional Information

Date Listed	May 29th, 2025
Days on Market	129
HOA Fees	\$380
HOA Fees Freq.	Quarterly
Property Taxes	\$2,745
Tax Year	2024
Office	Homes of Idaho
Contact Info	info@homesofidaho.com

Listing Details

Listing Office	Homes of Idaho
----------------	----------------



IDX information is provided exclusively for consumers' personal, non-commercial use, and may not be used for any purpose other than to identify prospective properties consumers may be interested in purchasing. IMLS does not assume any liability for missing or inaccurate data. Information provided by IMLS is deemed reliable but not guaranteed.

Listing information last updated on October 14th, 2025 at 1:33am MDT