

# \$629,900 - 3661 S Corabell Way, Meridian

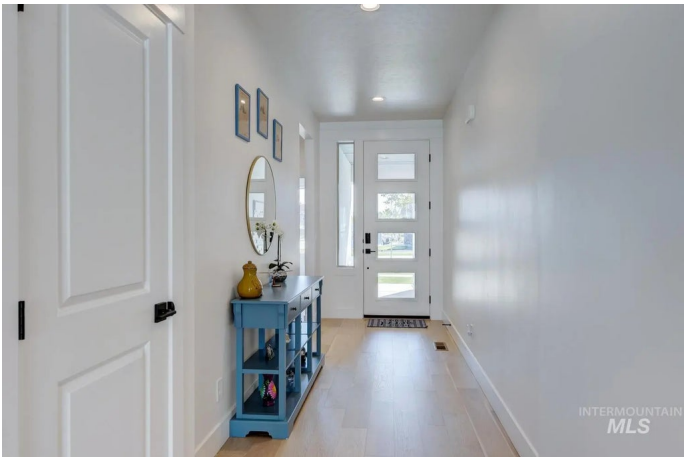
MLS® #98947748

**\$629,900**

4 Bedroom, 2.00 Bathroom, 2,002 sqft  
Residential on 0.23 Acres

Biltmore Estates, Meridian, ID

Seller offering buyer a \$5,000 credit at close of escrow! Modern, Nearly New 4-Bedroom Home with Designer Touches. This stunning, nearly new home features a sleek modern exterior and a spacious, open floor plan. With 4 bedrooms and 2 bathrooms, it offers stylish comfort for everyday living. The chef’s kitchen includes quartz countertops, a large island, and custom cabinets that extend to the ceiling—perfect for both cooking and entertaining. The great room is filled with natural light and features a tray ceiling with painted beams, adding character and elegance to the heart of the home. The luxurious primary suite includes a bathroom finished in quartz tile, dual sinks, a large soaking tub, a walk-in shower, and a generous walk-in closet with direct access to the laundry room for added convenience. Step outside to a covered patio—ideal for relaxing or entertaining guests. Located close to shopping, dining, and freeway access, this home offers modern living with unbeatable convenience.



Built in 2024

## Essential Information

MLS® #	98947748
Price Per SQFT	\$315
Bedrooms	4
Bathrooms	2.00

Square Footage	2,002
Acres	0.23
Year Built	2024
Type	Residential
Sub-Type	Single Family Residence
Status	Price Change

### Community Information

Address	3661 S Corabell Way
Area	Meridian SW - 1010
Subdivision	Biltmore Estates
City	Meridian
County	Ada
State	ID
Zip Code	83642-8952

### Amenities

Utilities	Sewer Connected, Cable Connected, Broadband Internet
Parking Spaces	3
Parking	Attached, Finished Driveway
# of Garages	3
Golf Course	N
Virtual Tour	<a href="https://tours.boiserealestatephotography.com/2328716?idx=1">https://tours.boiserealestatephotography.com/2328716?idx=1</a>

### Interior

Interior Features	Bath-Master, Bed-Master Main Level, Split Bedroom, Great Room, Double Vanity, Walk-In Closet(s), Breakfast Bar, Pantry, Kitchen Island, Quartz Counters
Appliances	Gas Water Heater, ENERGY STAR Qualified Water Heater, Tank Water Heater, Dishwasher, Disposal, Microwave, Oven/Range Built-In, Refrigerator, Gas Range
Heating	Forced Air, Natural Gas
Cooling	Central Air
Fireplace	Yes
Fireplaces	One, Gas
Stories	One
Primary On Main	Yes

### Exterior

Lot Description	Standard Lot 6000-9999 SF, Sidewalks, Corner Lot, Auto Sprinkler System, Full Sprinkler System, Pressurized Irrigation Sprinkler System
Roof	Composition, Architectural Style
Foundation	Crawl Space

### School Information

District	West Ada School District
Elementary	Mary McPherson
Middle	Victory
High	Meridian

### Additional Information

Date Listed	May 20th, 2025
Days on Market	146
HOA Fees	\$153
HOA Fees Freq.	Quarterly
Property Taxes	\$2,757
Tax Year	2025
Office	John L Scott Boise
Contact Info	craiggroves@johnlscott.com

### Listing Details

Listing Office	John L Scott Boise
----------------	--------------------



IDX information is provided exclusively for consumers' personal, non-commercial use, and may not be used for any purpose other than to identify prospective properties consumers may be interested in purchasing. IMLS does not assume any liability for missing or inaccurate data. Information provided by IMLS is deemed reliable but not guaranteed.

Listing information last updated on October 15th, 2025 at 12:18am MDT