

# \$1,275,000 - 911 Davis, McCall

MLS® #98946870

**\$1,275,000**

5 Bedroom, 3.00 Bathroom, 3,436 sqft

Residential on 0.28 Acres

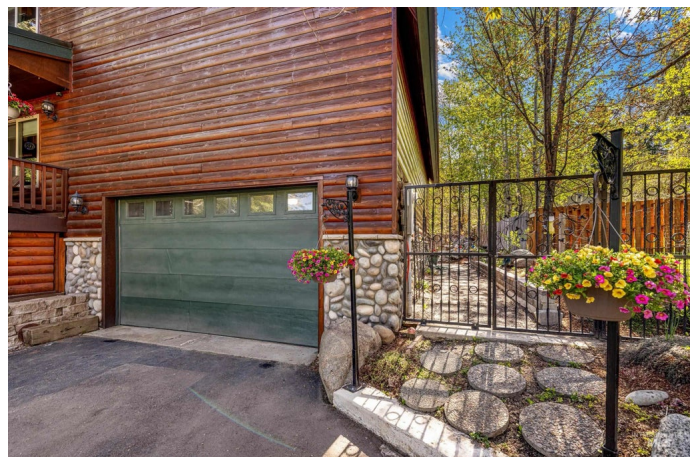
Thompson-Wooley, McCall, ID

Located just 5 minutes from downtown McCall and Payette Lake, this amazing 5-bedroom 3 bath home also features a guest cottage with two bedrooms and one bath. Built in 2012, the main house is 2,236 sq feet and the guest cottage is 1,200 square feet. The lower level on the main home has a huge crawl space/storage area the length of the entire home 6' and 8-inch thick concrete walls. This corner lot has two paved driveways. One for the guest cottage and one for the main house and the two garages. The home features a 376-foot deck, treed yard and low-maintenance landscaping. The floors upstairs and downstairs are 3/4" solid Brazilian Koa wood. The framing is all 2'x6" framing in the house and cottage. The house has blown-in insulation throughout. The gambrel roof on the house was designed with special trusses to handle the snow load of McCall. Snow and ice fall easily on the north and south sides. This amazing home is perfect for a large family or vacation rental with close proximity to Ponderosa Park, McCall

Built in 2012

## Essential Information

MLS® #	98946870
Price Per SQFT	\$371
Bedrooms	5
Bathrooms	3.00



Square Footage	3,436
Acres	0.28
Year Built	2012
Type	Residential
Sub-Type	Single Family Residence
Status	Active

### Community Information

Address	911 Davis
Area	McCall - 1800
Subdivision	Thompson-Wooley
City	McCall
County	Valley
State	ID
Zip Code	83638

### Amenities

Utilities	Cable Connected
Parking Spaces	2
Parking	Garage Door Access, Attached, Finished Driveway
# of Garages	2
Golf Course	N

### Interior

Interior Features	Bed-Master Main Level, Den/Office, Family Room, Double Vanity, Kitchen Island, Granite Counters
Appliances	Disposal, Microwave, Refrigerator, Washer, Dryer
Heating	Forced Air, Ductless/Mini Split
Cooling	Central Air
Stories	Two
Primary On Main	Yes

### Exterior

Lot Description	10000 SF - .49 AC, Bus on City Route, Garden, Corner Lot, Wooded, Winter Access
Roof	Metal
Foundation	Crawl Space

### School Information

District	McCall-Donnelly Joint District #421
Elementary	Barbara Morgan Elementary
Middle	McCall Donnelly
High	McCall Donnelly

### **Additional Information**

Date Listed	May 8th, 2025
Days on Market	114
Property Taxes	\$3,062
Tax Year	2024
Structures	Sep. Detached Dwelling, Sep. Detached w/Kitchen
Office	McCall Real Estate Company
Contact Info	avi.azoulay@mccallrealestate.com

### **Listing Details**

Listing Office	McCall Real Estate Company
----------------	----------------------------



IDX information is provided exclusively for consumers' personal, non-commercial use, and may not be used for any purpose other than to identify prospective properties consumers may be interested in purchasing. IMLS does not assume any liability for missing or inaccurate data. Information provided by IMLS is deemed reliable but not guaranteed.

Listing information last updated on October 12th, 2025 at 12:03pm MDT