

\$735,000 - 4101 N Creswell Way, Boise

MLS® #98946479

\$735,000

1 Bedroom, Bathroom, 2,651 sqft

Residential Income on 0.26 Acres

Combes Park, Boise, ID

Well maintained well managed Boarding House with 8 SRO rooms. Shared kitchens and shared baths. Tenants are long term. Current management will stay in place with scope of duty and compensation to be negotiated upon acceptance of offer. Common areas are available for viewing. Accepted offer for individual rooms. This is a very unique concept but an incredible cash flow opportunity with a great cap rate, stability, and relative ease of management. Property has been well maintained. Great location with easy access for bus routes. (majority of tenants do. not drive) This is a great investment for first time investors looking to get into the market.



Built in 1979

Essential Information

MLS® #	98946479
Price Per SQFT	\$277
Bedrooms	1
Square Footage	2,651
Acres	0.26
Year Built	1979
Type	Residential Income
Sub-Type	Other
Status	Active

Community Information

Address 4101 N Creswell Way

Area	Boise W-Garden City - 0650
Subdivision	Combes Park
City	Boise
County	Ada
State	ID
Zip Code	83713

Amenities

Utilities	Sewer Connected
Parking Spaces	4
Parking	Two Car, Attached, Finished
# of Garages	2
Golf Course	N

Interior

Appliances	Disposal (All Units), Stove/Range (All Units), Washer/Dryer (All Units)
Heating	Forced Air, Natural Gas
Cooling	Central Air

Exterior

Lot Description	10000SF - .49, Irrigation
Roof	Composition
Foundation	Slab

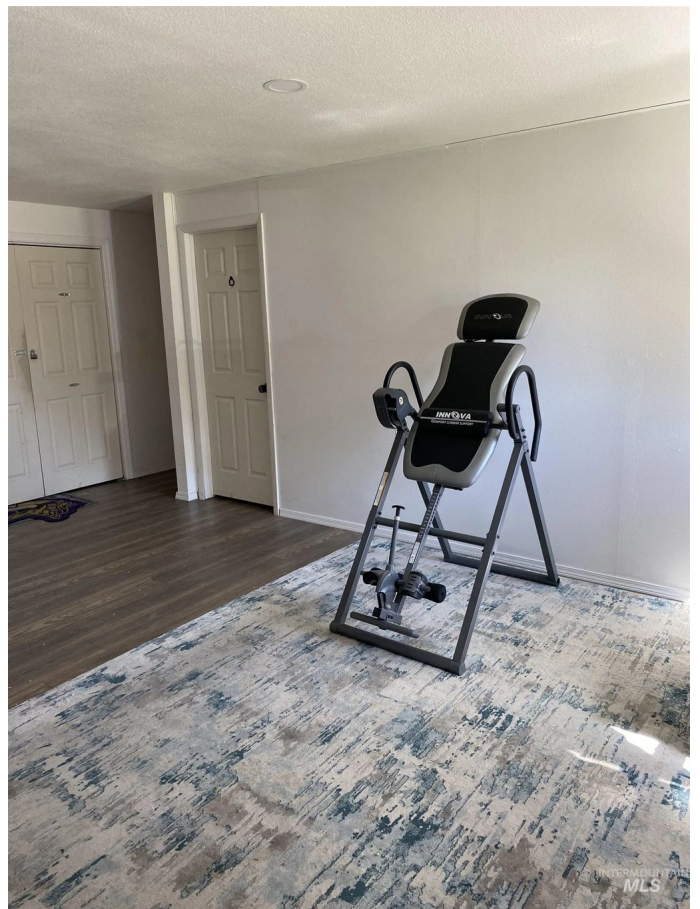
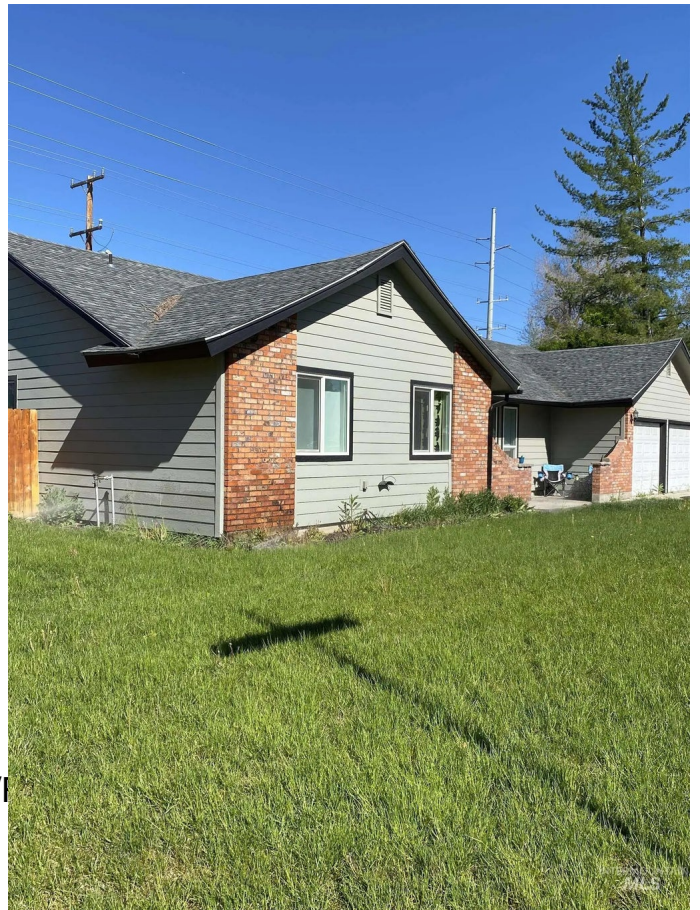
School Information

District	West Ada School District
Elementary	Frontier
Middle	LwlScottJr
High	Centennial

Additional Information

Date Listed	May 8th, 2025
Days on Market	31
Property Taxes	\$3,165
Tax Year	2024
Office	Majestic Idaho Real Estate
Contact Info	edlsperry@hotmail.com

Listing Details





IDX information is provided exclusively for consumers' personal, non-commercial use, and may not be used for any purpose other than to identify prospective properties consumers may be interested in purchasing. IMLS does not assume any liability for missing or inaccurate data. Information provided by IMLS is deemed reliable but not guaranteed.

Listing information last updated on October 11th, 2025 at 10:48pm MDT