

\$573,900 - 1379 W Ultar Dr, Nampa

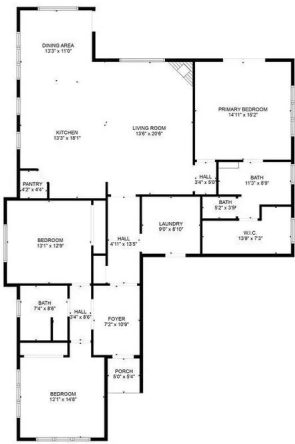
MLS® #98946313

\$573,900

3 Bedroom, 2.00 Bathroom, 1,931 sqft
Residential on 0.19 Acres

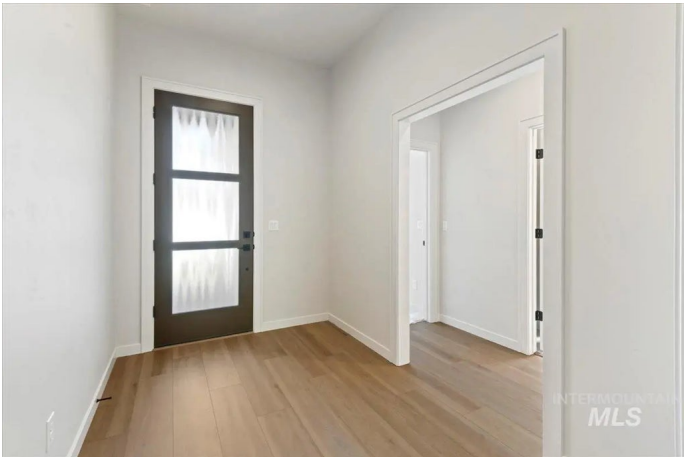
Summit Ridge (Canyon Co), Nampa, ID

Welcome to PIONEER HOMES Campton with 10' 3rd bay RV BOAT BAY! Just in time for summer fun on Lake Lowell! This home is set within the upscale Summit Ridge community offering a community pool, playground and bocce ball court. This home offers your buyers who are tired of viewing cookie cutter homes a fresh and modern look. The custom quality construction shows throughout with the "little things" that all add up to a "big finish." This home features custom designed and finished cabinets, custom barndoors with soft close Emtek hardware, designer lighting, all Quartz countertop surfaces, Bosch appliances and beautiful custom tile work throughout the home. Covered continuous back patio with no direct backyard neighbors to enjoy the summer evenings round out the appeal of this home. Add this one to your buyers viewing list, they won't be disappointed! Feel free to text or call with any questions on this or any other PIONEER HOMES that might be currently available and/or coming up soon.



INTERMOUNTAIN

FLOOR PLAN CREATED BY CURBICASA APP. MEASUREMENTS DEEMED HIGHLY RELIABLE BUT NOT GUARANTEED.



INTERMOUNTAIN
MLS

Built in 2025

Essential Information

MLS® #	98946313
Price Per SQFT	\$297
Bedrooms	3
Bathrooms	2.00
Square Footage	1,931

Acres	0.19
Year Built	2025
Type	Residential
Sub-Type	Single Family Residence
Status	Active

Community Information

Address	1379 W Ultar Dr
Area	Nampa South (86) - 1260
Subdivision	Summit Ridge (Canyon Co)
City	Nampa
County	Canyon
State	ID
Zip Code	83686
Builder	PIONEER HOMES, Inc.

Amenities

Utilities	Sewer Connected, Cable Connected, Broadband Internet
Parking Spaces	3
Parking	Attached, Other, Finished Driveway
# of Garages	3
Has Pool	Yes
Pool	Community
Golf Course	N
Virtual Tour	https://360idaho.tf.media/x2162325

Interior

Interior Features	Bath-Master, Bed-Master Main Level, Split Bedroom, Great Room, Double Vanity, Central Vacuum Plumbed, Walk-In Closet(s), Pantry, Kitchen Island, Quartz Counters
Appliances	Gas Water Heater, ENERGY STAR Qualified Water Heater, Tank Water Heater, Dishwasher, Disposal, Microwave, Oven/Range Built-In, Gas Oven, Gas Range
Heating	Forced Air, Natural Gas
Cooling	Central Air
Fireplace	Yes
Fireplaces	One, Gas
Stories	One
Primary On Main	Yes

Exterior

Lot Description	Standard Lot 6000-9999 SF, Irrigation Available, Auto Sprinkler System, Full Sprinkler System, Pressurized Irrigation Sprinkler System
Roof	Composition, Architectural Style
Foundation	Crawl Space

School Information

District	Nampa School District #131
Elementary	Lake Ridge
Middle	South Middle (Nampa)
High	Nampa

Additional Information

Date Listed	May 8th, 2025
Days on Market	130
HOA Fees	\$300
HOA Fees Freq.	Quarterly
New Construction	Yes
Property Taxes	\$1,147
Tax Year	2024
Office	Silvercreek Realty Group
Contact Info	broker@silvercreekrealty.com

Listing Details

Listing Office	Silvercreek Realty Group
----------------	--------------------------



IDX information is provided exclusively for consumers' personal, non-commercial use, and may not be used for any purpose other than to identify prospective properties consumers may be interested in purchasing. IMLS does not assume any liability for missing or inaccurate data. Information provided by IMLS is deemed reliable but not guaranteed.

Listing information last updated on October 14th, 2025 at 8:48am MDT