

# \$899,900 - 3535 E Warm Springs Ave, Boise

MLS® #98945903

**\$899,900**

3 Bedroom, 3.00 Bathroom, 2,652 sqft  
Residential on 0.08 Acres

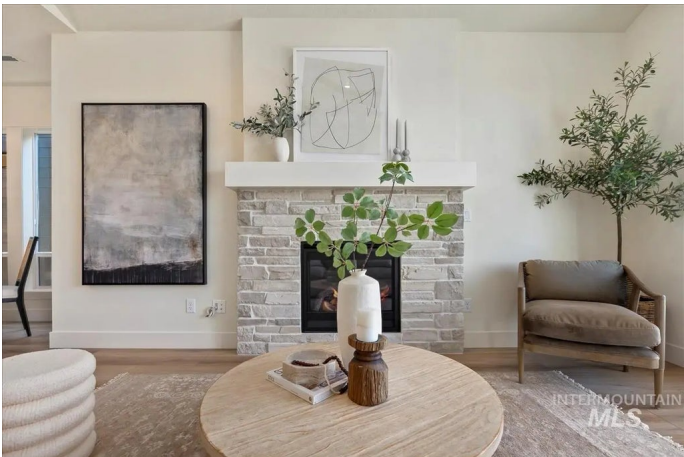
Barber Vista, Boise, ID

Introducing The Northpoint by Biltmore Company LLC, a masterpiece located in the Barber Vista community. This stunning home features an open floorplan with a main-level office that can double as a 4th bedroom, plus a versatile lower-level bonus room. Vaulted ceilings elevate the great room, creating a bright and inviting space. The gourmet kitchen shines with quartz countertops and high-end appliances. Retreat to the primary suite, complete with a spa-like ensuite boasting dual vanities and a spacious walk-in closet. Ideally located just minutes from all the outdoor activities Boise has to offer, including hiking, biking, and recreation along the Boise Greenbelt. A true blend of luxury, location, and ease of living. PHOTOS ARE SIMILAR & ARE USED TO SHOW ARTISTRY & WORKMANSHIP OF BUILDER.

Built in 2025

## Essential Information

MLS® #	98945903
Price Per SQFT	\$339
Bedrooms	3
Bathrooms	3.00
Square Footage	2,652
Acres	0.08
Year Built	2025
Type	Residential



Sub-Type	Single Family Residence
Status	Active

### Community Information

Address	3535 E Warm Springs Ave
Area	Boise NE - 0200
Subdivision	Barber Vista
City	Boise
County	Ada
State	ID
Zip Code	83716
Builder	Biltmore Company LLC

### Amenities

Utilities	Sewer Connected
Parking Spaces	3
Parking	Attached, Alley Access, Finished Driveway
# of Garages	3
Golf Course	N

### Interior

Interior Features	Bath-Master, Bed-Master Main Level, Den/Office, Great Room, Rec/Bonus, Double Vanity, Central Vacuum Plumbed, Walk-In Closet(s), Breakfast Bar, Pantry, Kitchen Island, Quartz Counters
Appliances	Gas Water Heater, ENERGY STAR Qualified Water Heater, Tank Water Heater, Dishwasher, Disposal, Double Oven, Microwave, Oven/Range Built-In, Gas Oven, Gas Range
Heating	Forced Air, Natural Gas
Cooling	Central Air
Fireplace	Yes
Fireplaces	One, Gas
Stories	Single with Below Grade
Primary On Main	Yes

### Exterior

Lot Description	Sm Lot 5999 SF, Irrigation Available, Sidewalks, Auto Sprinkler System, Drip Sprinkler System, Full Sprinkler System, Pressurized Irrigation Sprinkler System
Roof	Composition, Architectural Style

### School Information

District	Boise School District #1
Elementary	Dallas Harris
Middle	East Jr
High	Timberline

### **Additional Information**

Date Listed	May 6th, 2025
Days on Market	149
HOA Fees	\$475
HOA Fees Freq.	Semi-Annually
New Construction	Yes
Tax Year	2024
Office	Silvercreek Realty Group
Contact Info	broker@silvercreekrealty.com

### **Listing Details**

Listing Office	Silvercreek Realty Group
----------------	--------------------------



IDX information is provided exclusively for consumers' personal, non-commercial use, and may not be used for any purpose other than to identify prospective properties consumers may be interested in purchasing. IMLS does not assume any liability for missing or inaccurate data. Information provided by IMLS is deemed reliable but not guaranteed.

Listing information last updated on October 14th, 2025 at 6:03pm MDT