

\$544,990 - 1002 E Perjue Basin Dr, Nampa

MLS® #98945779

\$544,990

4 Bedroom, 2.00 Bathroom, 2,539 sqft

Residential on 0.28 Acres

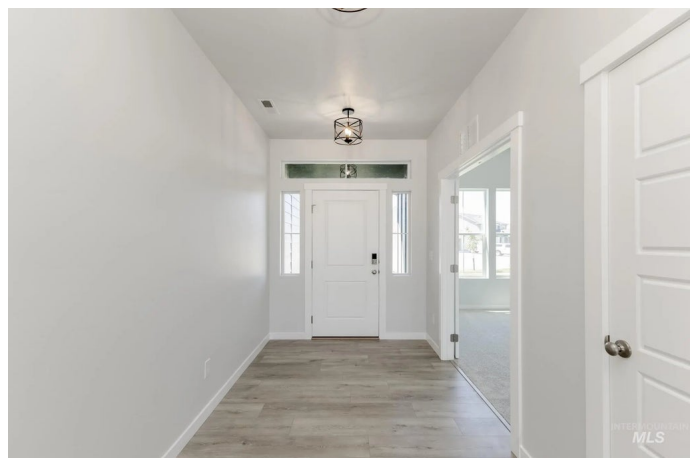
Jacks Place, Nampa, ID

Fall in Love with Low Rates! Promotional rate as low as 2.99%. Ask a Sales Specialist for details! Embrace the comforts of a brand new home in Nampa, Idaho. Indulge yourself with the single level + bonus room you've been dreaming of in the Sonoma 2539. Pass through the bright and airy entryway to enjoy a modern great-room design. The kitchen comes with stainless steel appliances and stylish solid surface countertops, adding both functionality and aesthetics to the kitchen. Perch at the kitchen island, seat yourself in the dining room, or mosey onto the back patio to enjoy food and company with friends and loved ones. Large windows fill the space with natural light, enhancing the inviting atmosphere. The primary suite is an escape-worthy retreat with a walk-in shower & separate soaker tub! The upstairs bonus room is bursting with the potential to be your perfect home office or game room. Potential RV parking available. Photos are of the actual home!

Built in 2025

Essential Information

MLS® #	98945779
Price Per SQFT	\$215
Bedrooms	4
Bathrooms	2.00
Square Footage	2,539
Acres	0.28



Year Built	2025
Type	Residential
Sub-Type	Single Family Residence
Status	Price Change

Community Information

Address	1002 E Perjue Basin Dr
Area	Nampa South (86) - 1260
Subdivision	Jacks Place
City	Nampa
County	Canyon
State	ID
Zip Code	83686
Builder	CBH Homes

Amenities

Utilities	Sewer Connected
Parking Spaces	3
Parking	Attached
# of Garages	3
Golf Course	N
Virtual Tour	https://my.matterport.com/show/?m=fcTmEuyQ3xR&mls=1

Interior

Interior Features	Bath-Master, Bed-Master Main Level, Great Room, Double Vanity, Breakfast Bar, Pantry, Kitchen Island, Solid Surface Counters
Appliances	Gas Water Heater, Dishwasher, Disposal, Microwave, Oven/Range Freestanding
Heating	Forced Air, Natural Gas
Cooling	Central Air
Fireplace	Yes
Fireplaces	One, Gas, Insert
Stories	Single w/ Upstairs Bonus Room
Primary On Main	Yes

Exterior

Lot Description	10000 SF - .49 AC, Sidewalks, Pressurized Irrigation Sprinkler System
Roof	Composition

School Information

District	Nampa School District #131
Elementary	Lake Ridge
Middle	South Middle (Nampa)
High	Skyview

Additional Information

Date Listed	May 5th, 2025
Days on Market	158
HOA Fees	\$600
HOA Fees Freq.	Annually
New Construction	Yes
Tax Year	2025
Office	CBH Sales & Marketing Inc
Contact Info	tarak@cbhhomes.com

Listing Details

Listing Office	CBH Sales & Marketing Inc
----------------	---------------------------



IDX information is provided exclusively for consumers' personal, non-commercial use, and may not be used for any purpose other than to identify prospective properties consumers may be interested in purchasing. IMLS does not assume any liability for missing or inaccurate data. Information provided by IMLS is deemed reliable but not guaranteed.

Listing information last updated on October 11th, 2025 at 8:03pm MDT