

\$659,990 - 10053 W Lyrical Dr, Boise

MLS® #98945755

\$659,990

4 Bedroom, 3.00 Bathroom, 2,543 sqft

Residential on 0.23 Acres

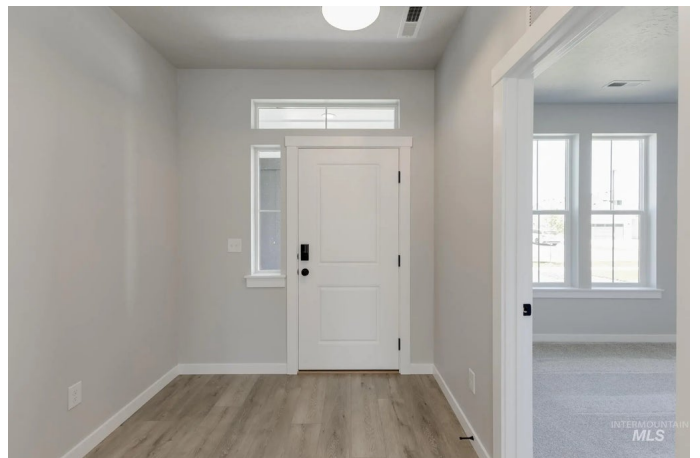
Music Estates, Boise, ID

Fall in Love with Low Rates! Promotional rate as low as 2.99%. Embrace the comforts of a brand new home in Boise, Idaho. Full landscaping included with the home! Feel love at first sight with the Glenlake 2543. The dedicated entryway welcomes you to the main level where you will find a bedroom, half bath, and a phenomenal great room. The kitchen boasts upgraded finishes, including stainless steel appliances, a gas range, and stylish solid surface countertops. The adjacent living and dining rooms ensure that no one misses a moment of the action. Explore the upstairs to enjoy the flexible loft space or unwind in the other 3 bedrooms. The primary suite beckons with its en suite bath, dual vanities, and separate soaker tub. An additional tandem bay in the attached garage is rife with the potential to maximize storage space, park an additional vehicle, or create a home gym. Photos are of the actual home!

Built in 2025

Essential Information

MLS® #	98945755
Price Per SQFT	\$260
Bedrooms	4
Bathrooms	3.00
Square Footage	2,543
Acres	0.23
Year Built	2025



Type	Residential
Sub-Type	Single Family Residence
Status	Active

Community Information

Address	10053 W Lyrical Dr
Area	Boise South - 0500
Subdivision	Music Estates
City	Boise
County	Ada
State	ID
Zip Code	83709
Builder	CBH Homes

Amenities

Utilities	Sewer Connected
Parking Spaces	4
Parking	Attached
# of Garages	4
Golf Course	N
Virtual Tour	https://my.matterport.com/show/?m=2Bu33kBUFyJ&mls=1

Interior

Interior Features	Bath-Master, Bed-Master Main Level, Walk-In Closet(s), Breakfast Bar, Pantry, Kitchen Island, Solid Surface Counters
Appliances	Gas Water Heater, Dishwasher, Disposal, Microwave, Oven/Range Freestanding, Gas Range
Heating	Forced Air, Natural Gas
Cooling	Central Air
Stories	Two

Exterior

Lot Description	Standard Lot 6000-9999 SF, Sidewalks, Auto Sprinkler System, Full Sprinkler System
Roof	Composition

School Information

District	Boise School District #1
Elementary	Maple Grove
Middle	West Boise Jr

High Borah

Additional Information

Date Listed May 5th, 2025
Days on Market 161
HOA Fees \$775
HOA Fees Freq. Annually
New Construction Yes
Tax Year 2024
Office CBH Sales & Marketing Inc
Contact Info tarak@cbhhomes.com

Listing Details

Listing Office CBH Sales & Marketing Inc



IDX information is provided exclusively for consumers' personal, non-commercial use, and may not be used for any purpose other than to identify prospective properties consumers may be interested in purchasing. IMLS does not assume any liability for missing or inaccurate data. Information provided by IMLS is deemed reliable but not guaranteed.

Listing information last updated on October 14th, 2025 at 5:48pm MDT