

# \$245,000 - 29 Beaver Creek Road, Boise

MLS® #98944846

**\$245,000**

3 Bedroom, 2.00 Bathroom, 1,440 sqft  
Residential on 1.00 Acres

Boise Holcomb, Boise, ID

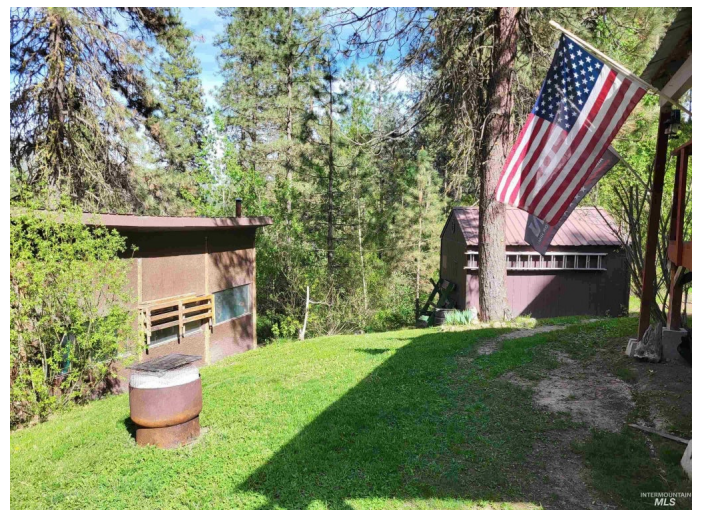
Affordable living in the beautiful outskirts of Idaho City. One acre lot with three-bedroom manufactured home in Clear Creek Estates /Boise Holcomb Subdivision. Plenty of space for all your toys, great location with year-round access and maintained roads. Come enjoy a serene way of life in the heart of the forest and mountains, just a short scenic drive to Boise if commuting, high speed internet available if working from home. This home is minutes from the Clear Creek Lodge and nestled in a private spot. Fully insulated, heated and cooled cold room, 12 X24 detached garage, additional 12 X 14 storage shed, backup generator for the house, and 500-gallon owned propane tank.

Built in 1980

## Essential Information

MLS® #	98944846
Price Per SQFT	\$170
Bedrooms	3
Bathrooms	2.00
Square Footage	1,440
Acres	1.00
Year Built	1980
Type	Residential
Sub-Type	Manufactured On Land
Status	Active

## Community Information



Address	29 Beaver Creek Road
Area	East Boise County - 1450
Subdivision	Boise Holcomb
City	Boise
County	Boise
State	ID
Zip Code	83716

### **Amenities**

Utilities	Electricity Connected, Cable Connected, Broadband Internet
Parking Spaces	1
Parking	Detached, RV Access/Parking
# of Garages	1
RV/Boat Parking	Yes
View	Yes
Golf Course	N

### **Interior**

Interior Features	Bath-Master, Bed-Master Main Level, Laminate Counters
Appliances	Gas Water Heater, Dishwasher, Oven/Range Freestanding, Refrigerator, Washer, Dryer
Heating	Electric, Wood
Cooling	Wall/Window Unit(s)
Fireplace	Yes
Fireplaces	Wood Burning Stove
Stories	One
Primary On Main	Yes

### **Exterior**

Lot Description	1 - 4.99 AC, R.V. Parking, Views, Chickens, Wooded, Winter Access
Roof	Metal

### **School Information**

District	Basin School District #72
Elementary	Idaho City
Middle	Idaho City
High	Idaho City

### **Additional Information**

Date Listed	April 29th, 2025
Days on Market	149
Property Taxes	\$445
Tax Year	2024
Structures	Storage Shed
Office	Boise Premier Real Estate
Contact Info	brett@boisepremier.com

### **Listing Details**

Listing Office	Boise Premier Real Estate
----------------	---------------------------



IDX information is provided exclusively for consumers' personal, non-commercial use, and may not be used for any purpose other than to identify prospective properties consumers may be interested in purchasing. IMLS does not assume any liability for missing or inaccurate data. Information provided by IMLS is deemed reliable but not guaranteed.

Listing information last updated on October 15th, 2025 at 1:33am MDT