

\$524,900 - 10270 Stony Oak Court, Nampa

MLS® #98944806

\$524,900

3 Bedroom, 2.00 Bathroom, 2,115 sqft
Residential on 0.16 Acres

Arbor, Nampa, ID

The Silver Sage offers a beautifully designed single-level layout with space and functionality. Vaulted ceilings in the family room and primary bedroom create a grand and open feel. The den provides a versatile space for work or hobbies, while a cozy fireplace anchors the family room. The primary bathroom features a relaxing bathtub, adding to the home's comfort. Both the family room and primary suite have doors leading to the fully covered patio, perfect for outdoor relaxation.

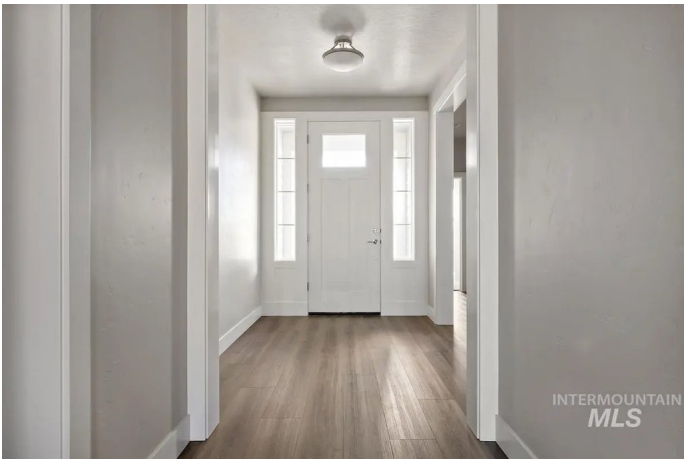
Built in 2024

Essential Information

MLS® #	98944806
Price Per SQFT	\$248
Bedrooms	3
Bathrooms	2.00
Square Footage	2,115
Acres	0.16
Year Built	2024
Type	Residential
Sub-Type	Single Family Residence
Status	Active

Community Information

Address	10270 Stony Oak Court
Area	Caldwell NW - 1275
Subdivision	Arbor
City	Nampa



County	Canyon
State	ID
Zip Code	83687
Builder	Brighton Homes

Amenities

Utilities	Sewer Connected, Cable Connected
Parking Spaces	2
Parking	Attached
# of Garages	2
Has Pool	Yes
Pool	Community, In Ground, Pool
Golf Course	N

Interior

Interior Features	Bath-Master, Bed-Master Main Level, Den/Office, Family Room, Double Vanity, Walk-In Closet(s), Pantry, Kitchen Island, Quartz Counters
Appliances	Gas Water Heater, ENERGY STAR Qualified Water Heater, Tankless Water Heater, Dishwasher, Disposal, Microwave, Oven/Range Freestanding, Gas Oven, Gas Range
Heating	Forced Air, Natural Gas
Cooling	Central Air
Fireplace	Yes
Fireplaces	Gas
Stories	One
Primary On Main	Yes

Exterior

Lot Description	Standard Lot 6000-9999 SF, Sidewalks, Cul-De-Sac, Auto Sprinkler System, Drip Sprinkler System, Full Sprinkler System
Roof	Composition, Architectural Style
Foundation	Crawl Space

School Information

District	Vallivue School District #139
Elementary	Desert Springs
Middle	Sage Valley
High	Ridgevue

Additional Information

Date Listed	April 29th, 2025
Days on Market	164
Zoning	Nampa
HOA Fees	\$400
HOA Fees Freq.	Semi-Annually
New Construction	Yes
Tax Year	2025
Office	Equity Northwest Real Estate
Contact Info	kit@kitfitzgeraldteam.com

Listing Details

Listing Office Equity Northwest Real Estate



IDX information is provided exclusively for consumers' personal, non-commercial use, and may not be used for any purpose other than to identify prospective properties consumers may be interested in purchasing. IMLS does not assume any liability for missing or inaccurate data. Information provided by IMLS is deemed reliable but not guaranteed.

Listing information last updated on October 11th, 2025 at 4:18pm MDT