

\$650,000 - 7136 N Cairnhill Way, Eagle

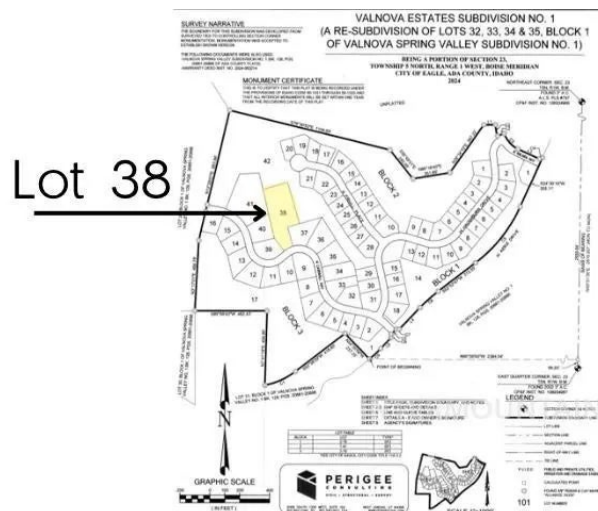
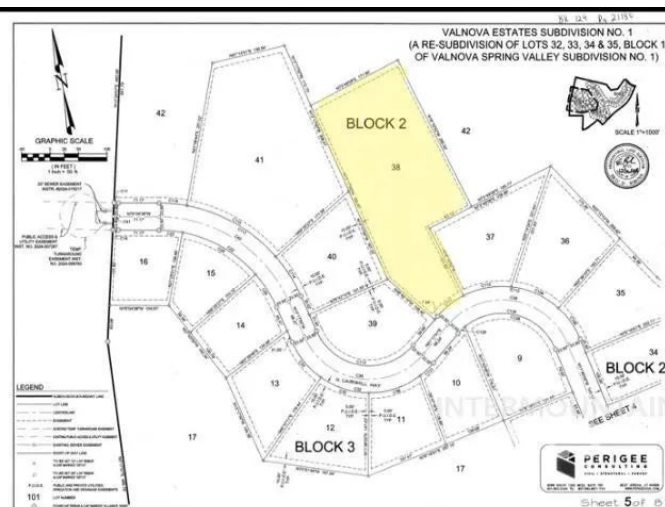
MLS® #98944648

\$650,000

Bedroom, Bathroom,
Land on 1.46 Acres

Valnova Estates Subdivision, Eagle, ID

Discover the perfect opportunity to build your dream home on this stunning 1.46-acre lot nestled in the hills of the new Valnova planned community in North Eagle, Idaho. This prime location offers breathtaking open views of the surrounding mountains and the future 18-hole golf course, providing a serene and picturesque setting. Valnova is designed with community and convenience in mind, featuring an incredible town square complete with shops, restaurants, and a 3-acre swimming pond. It's the ideal place to enjoy a vibrant lifestyle with all the amenities you could desire. Superior Custom Homes is the exclusive builder for this lot, offering the flexibility to create a fully custom home tailored to your preferences or choose from one of our award-winning floorplans. With our expertise and commitment to quality, your new home will be a masterpiece in this exceptional community. Don't miss out on this unique opportunity to be part of Valnova's premier development. Contact us today.



Essential Information

MLS® #	98944648
Price Per Acre	\$445,205
Acres	1.46
Type	Land
Sub-Type	Build to Suit Residential
Status	Active

Community Information

Address	7136 N Cairnhill Way
Area	Eagle - 0900
Subdivision	Valnova Estates Subdivision
City	Eagle
County	Ada
State	ID
Zip Code	83616-0000

Amenities

Utilities	Electricity Available, Natural Gas Connected
Golf Course	N

Exterior

Lot Description	1 Acre - 4.99 Acres
-----------------	---------------------

Additional Information

Date Listed	April 28th, 2025
Days on Market	16
HOA Fees	\$240
HOA Fees Freq.	Monthly
Tax Year	2025
Office	Silvercreek Realty Group
Contact Info	kristadeacon@gmail.com

Listing Details

Listing Office	Silvercreek Realty Group
----------------	--------------------------



IDX information is provided exclusively for consumers' personal, non-commercial use, and may not be used for any purpose other than to identify prospective properties consumers may be interested in purchasing. IMLS does not assume any liability for missing or inaccurate data. Information provided by IMLS is deemed reliable but not guaranteed.

Listing information last updated on October 15th, 2025 at 5:03am MDT