

\$629,900 - 2308 E Chimere Dr, Meridian

MLS® #98944126

\$629,900

4 Bedroom, 2.00 Bathroom, 2,523 sqft

Residential on 0.18 Acres

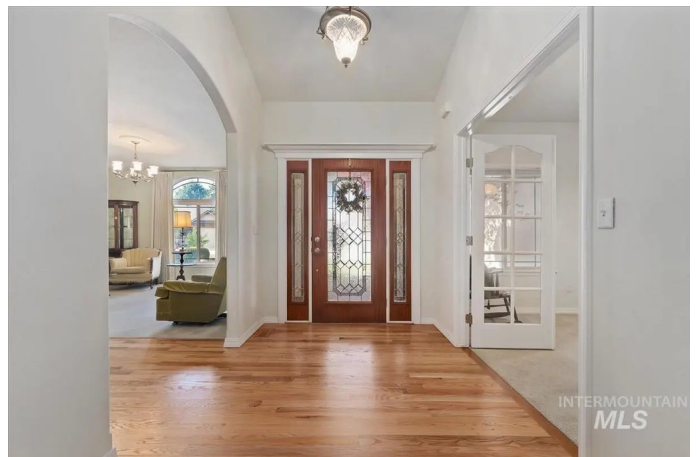
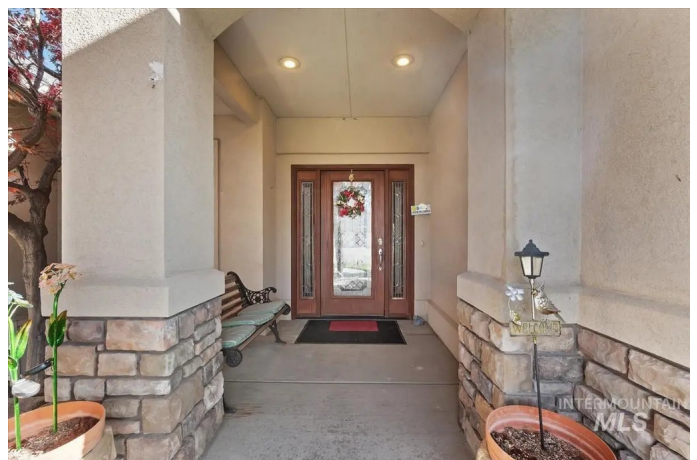
Packard Sub, Meridian, ID

Welcome to this stunning single-level home in the desirable Packard Subdivision of Meridian! This spacious 4-bedroom, 2-bathroom residence offers 2,523 sq. ft. of living space and is designed for both comfort and accessibility. Step inside to find real hardwood floors, freshly refinished to enhance the home's warmth and elegance. The wide hallways and roll-in shower make this home wheelchair accessible, ensuring ease of movement throughout. With two living areas, a formal dining room, and a breakfast bar, there's plenty of space for entertaining and everyday living. Enjoy the private covered patio, perfect for relaxing while overlooking the beautifully maintained backyard. The community pool adds to the neighborhood's appeal, providing a great space for summer fun. Additional features include a three-car attached garage, granite countertops, and a pressurized irrigation sprinkler system to keep the landscaping lush.

Built in 2004

Essential Information

MLS® #	98944126
Price Per SQFT	\$250
Bedrooms	4
Bathrooms	2.00
Square Footage	2,523
Acres	0.18



Year Built	2004
Type	Residential
Sub-Type	Single Family Residence
Status	Active

Community Information

Address	2308 E Chimere Dr
Area	Meridian NE - Boise NW - 1020
Subdivision	Packard Sub
City	Meridian
County	Ada
State	ID
Zip Code	83646
Builder	Stone Ridge Homes

Amenities

Utilities	Sewer Connected, Cable Connected, Broadband Internet
Parking Spaces	3
Parking	Attached
# of Garages	3
Has Pool	Yes
Pool	Community, Pool
Golf Course	N

Interior

Interior Features	Bed-Master Main Level, Walk-In Closet(s), Breakfast Bar, Granite Counters
Appliances	Gas Water Heater, Dishwasher, Disposal, Microwave, Oven/Range Freestanding, Refrigerator, Washer, Dryer, Water Softener Owned
Heating	Forced Air, Natural Gas
Cooling	Central Air
Fireplace	Yes
Fireplaces	One
Stories	One
Primary On Main	Yes

Exterior

Lot Description	Standard Lot 6000-9999 SF, Sidewalks, Auto Sprinkler System, Full Sprinkler System, Pressurized Irrigation Sprinkler System
-----------------	-----------------------------------------------------------------------------------------------------------------------------

Roof Composition

School Information

District West Ada School District
Elementary River Valley
Middle Lewis and Clark
High Meridian

Additional Information

Date Listed April 24th, 2025
Days on Market 160
HOA Fees \$500
HOA Fees Freq. Annually
Property Taxes \$2,089
Tax Year 2024
Office Keller Williams Realty Boise
Contact Info broker@kwboise.com

Listing Details

Listing Office Keller Williams Realty Boise



IDX information is provided exclusively for consumers' personal, non-commercial use, and may not be used for any purpose other than to identify prospective properties consumers may be interested in purchasing. IMLS does not assume any liability for missing or inaccurate data. Information provided by IMLS is deemed reliable but not guaranteed.

Listing information last updated on October 14th, 2025 at 10:33pm MDT