

# \$447,968 - 10436 Bellevue Ridge St, Nampa

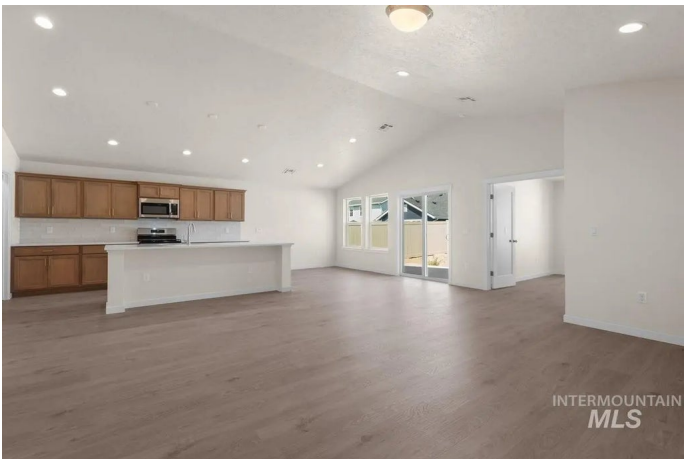
MLS® #98943587

**\$447,968**

3 Bedroom, 2.00 Bathroom, 2,009 sqft  
Residential on 0.14 Acres

Adams Ridge, Nampa, ID

\$35,000 Builder Promotion, see agent for details. The Crestwood Signature Series Plus with Craftsman Elevation is a favorite! This home was truly made for entertaining – wow your guests with your never-ending kitchen island, enjoy quality time in the open yet cozy living room, and show off your gorgeous primary suite. And check out that tandem 2 car garage. This home offers an extended patio and a front covered porch, a walk-in shower and soaker tub with dual sinks and much more. Photos and tour are of a similar home. This home is HERS and Energy Star rated with annual energy savings!



Built in 2025

## Essential Information

MLS® #	98943587
Price Per SQFT	\$223
Bedrooms	3
Bathrooms	2.00
Square Footage	2,009
Acres	0.14
Year Built	2025
Type	Residential
Sub-Type	Single Family Residence
Status	Active

## Community Information

Address 10436 Bellevue Ridge St

Area	Nampa NE (87) - 1250
Subdivision	Adams Ridge
City	Nampa
County	Canyon
State	ID
Zip Code	83687
Builder	Hubble Homes

### **Amenities**

Utilities	Sewer Connected
Parking Spaces	2
Parking	Attached, Finished Driveway
# of Garages	2
Has Pool	Yes
Pool	Pool
Golf Course	N

### **Interior**

Interior Features	Bath-Master, Great Room, Walk-In Closet(s), Loft, Pantry, Kitchen Island, Solid Surface Counters
Appliances	Gas Water Heater, Dishwasher, Disposal, Oven/Range Freestanding
Heating	Forced Air
Cooling	Central Air
Stories	One
Primary On Main	Yes

### **Exterior**

Lot Description	Standard Lot 6000-9999 SF, Irrigation Available, Sidewalks, Auto Sprinkler System, Partial Sprinkler System, Pressurized Irrigation Sprinkler System
Roof	Architectural Style
Foundation	Crawl Space

### **School Information**

District	Vallivue School District #139
Elementary	Desert Springs
Middle	Sage Valley
High	Ridgevue

### **Additional Information**

Date Listed	April 18th, 2025
Days on Market	167
HOA Fees	\$600
HOA Fees Freq.	Annually
New Construction	Yes
Tax Year	2024
Office	Hubble Homes, LLC
Contact Info	burwin11@gmail.com

### **Listing Details**

Listing Office	Hubble Homes, LLC
----------------	-------------------



IDX information is provided exclusively for consumers' personal, non-commercial use, and may not be used for any purpose other than to identify prospective properties consumers may be interested in purchasing. IMLS does not assume any liability for missing or inaccurate data. Information provided by IMLS is deemed reliable but not guaranteed.

Listing information last updated on October 11th, 2025 at 6:18pm MDT