

\$465,000 - 970 N Clithero Dr, Boise

MLS® #98943128

\$465,000

2 Bedroom, 2.00 Bathroom, 770 sqft

Residential on 0.14 Acres

Clithero Sub, Boise, ID

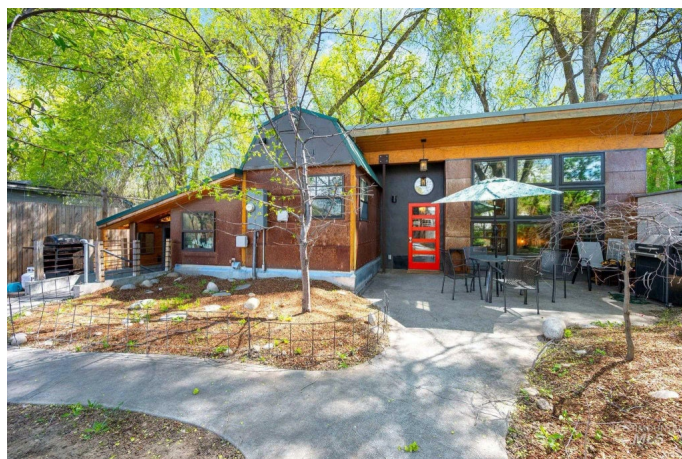
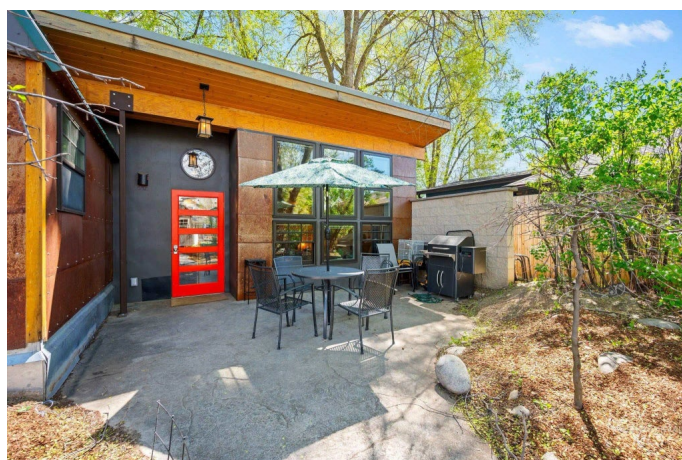
Stand inside and you'll feel it: the quiet pull of a place that chooses you as much as you choose it: This custom-built Boise home blends smart design with timeless warmth.

Vaulted wood ceilings, radiant-heated concrete floors, and a wall of windows flood the interior with natural light (Notice the way the light fills the space). Bamboo floors add elegant contrast to the open living and dining area, complemented by a fireplace and ductless HVAC. The kitchen offers concrete counters, open shelving, and a breakfast bar that invites casual moments. Step outside to a spacious lot with mature trees, a large patio, RV parking, and a storage shed—just minutes from Whitewater Park and the Greenbelt. With tenants on month-to-month, the property offers immediate income and long-term flexibility. Imagine owning a space like this. You™I want to schedule a time to walk through—and it™s easy to see the value in the details that only show up in person.

Built in 2015

Essential Information

MLS® #	98943128
Price Per SQFT	\$604
Bedrooms	2
Bathrooms	2.00
Square Footage	770



Acres	0.14
Year Built	2015
Type	Residential
Sub-Type	Single Family Residence
Status	Active

Community Information

Address	970 N Clithero Dr
Area	Boise North - 0100
Subdivision	Clithero Sub
City	Boise
County	Ada
State	ID
Zip Code	83703

Amenities

Utilities	Sewer Connected
Parking	RV Access/Parking, Finished Driveway
RV/Boat Parking	Yes
Golf Course	N
Virtual Tour	https://my.matterport.com/show/?m=h1qQxmE7evd&brand=0&mls=1&

Interior

Interior Features	Breakfast Bar, Countertop-Concrete
Appliances	Electric Water Heater, Gas Water Heater, Tank Water Heater, Tankless Water Heater, Microwave, Oven/Range Freestanding, Refrigerator, Washer, Dryer
Heating	Natural Gas, Radiant, Ductless/Mini Split
Cooling	Ductless/Mini Split
Fireplace	Yes
Fireplaces	Gas
Stories	One
Primary On Main	Yes

Exterior

Lot Description	Standard Lot 6000-9999 SF, Garden, R.V. Parking, Sidewalks, Manual Sprinkler System
Roof	Metal
Foundation	Crawl Space, Slab

School Information

District	Boise School District #1
Elementary	Lowell
Middle	Hillside
High	Boise

Additional Information

Date Listed	April 16th, 2025
Days on Market	173
Zoning	R-2
Property Taxes	\$3,115
Tax Year	2023
Structures	Storage Shed
Office	Sweet Group Realty
Contact Info	jeffery.sweet@gmail.com

Listing Details

Listing Office	Sweet Group Realty
----------------	--------------------



IDX information is provided exclusively for consumers' personal, non-commercial use, and may not be used for any purpose other than to identify prospective properties consumers may be interested in purchasing. IMLS does not assume any liability for missing or inaccurate data. Information provided by IMLS is deemed reliable but not guaranteed.

Listing information last updated on October 14th, 2025 at 9:03am MDT