

\$1,499,900 - 2382 N Annadale Pl, Eagle

MLS® #98941875

\$1,499,900

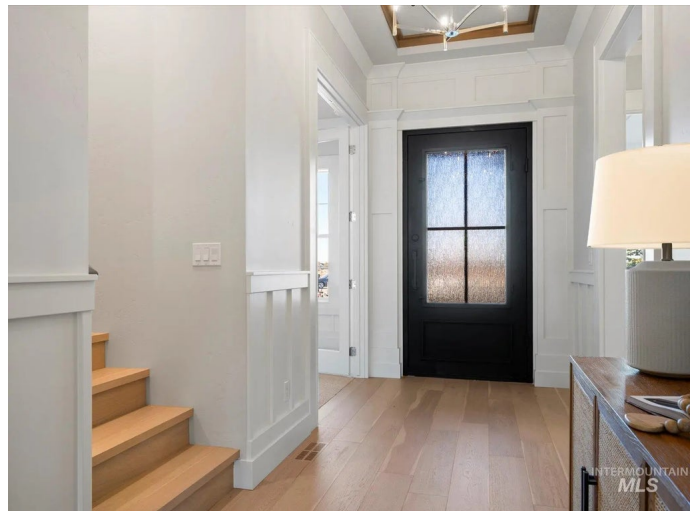
4 Bedroom, 3.00 Bathroom, 3,322 sqft

Residential on 0.34 Acres

Kingswood Estates, Eagle, ID

This Stunning home is move in ready! The Savannah by Todd Campbell Custom Homes is a designer curated floorplan with intentional spaces built for everyday living & perfectly positioned on a private cu-de-sac lot. Highlighted by a stunning mix of wood tones, metals, custom trim work with fabulous beamed ceilings, beautiful quartz and tile work will impress you from the moment you enter. Inside soaring vaulted ceilings compliment the great room while the gourmet kitchen impresses with an island and two breakfast/dining bars, full length cabinetry, spice and knife holder drawers, top tier Wolf appliance package & spacious pantry. The dining nook features a beamed ceiling while a butcher block counter offers inside/outside dining. Main level primary boasts vaulted ceilings with shiplap accent wall & a grand en-suite w/ state-of-the-art steam shower w/ adjustable temperature settings, mood lighting, built-in sound system, & heated tile floors. Relax upstairs in the huge bonus room (or 4th bed/guest suite) with full bath. Incredible outdoor living with a custom brick fireplace on the expansive covered patio, with full landscaping, fencing & a natural stone waterfall this home is as practical as it is beautiful. Close to downtown, Kingswood Estates offers a private pond, community pool and walking paths with mature landscaping and numerous waterfalls.

Built in 2025



Essential Information

MLS® #	98941875
Price Per SQFT	\$452
Bedrooms	4
Bathrooms	3.00
Square Footage	3,322
Acres	0.34
Year Built	2025
Type	Residential
Sub-Type	Single Family Residence
Status	Active

Community Information

Address	2382 N Annadale Pl
Area	Eagle - 0900
Subdivision	Kingswood Estates
City	Eagle
County	Ada
State	ID
Zip Code	83616
Builder	Todd Campbell Custom Home

Amenities

Utilities	Sewer Connected
Parking Spaces	4
Parking	Attached, Finished Driveway
# of Garages	4
Has Pool	Yes
Pool	Community, Pool
Golf Course	N

Interior

Interior Features	Bath-Master, Bed-Master Main Level, Split Bedroom, Den/Office, Great Room, Rec/Bonus, Double Vanity, Central Vacuum Plumbed, Walk-In Closet(s), Breakfast Bar, Pantry, Kitchen Island, Quartz Counters
Appliances	Gas Water Heater, ENERGY STAR Qualified Water Heater, Dishwasher, Disposal, Double Oven, Microwave, Oven/Range Built-In, Refrigerator, Gas Range
Heating	Forced Air, Natural Gas

Cooling	Central Air
Fireplace	Yes
Fireplaces	One, Gas, Insert
Stories	Single w/ Upstairs Bonus Room
Primary On Main	Yes

Exterior

Lot Description	10000 SF - .49 AC, Irrigation Available, Sidewalks, Cul-De-Sac, Auto Sprinkler System, Full Sprinkler System, Pressurized Irrigation Sprinkler System
Roof	Composition, Architectural Style

School Information

District	West Ada School District
Elementary	Eagle Hills
Middle	Eagle Middle
High	Eagle

Additional Information

Date Listed	April 7th, 2025
Days on Market	190
Zoning	City of Eagle-R-2/DA/P
HOA Fees	\$2,000
HOA Fees Freq.	Annually
New Construction	Yes
Tax Year	2024
Office	Silvercreek Realty Group
Contact Info	broker@silvercreekrealty.com

Listing Details

Listing Office	Silvercreek Realty Group
----------------	--------------------------



IDX information is provided exclusively for consumers' personal, non-commercial use, and may not be used for any purpose other than to identify prospective properties consumers may be interested in purchasing. IMLS does not assume any liability for missing or inaccurate data. Information provided by IMLS is deemed reliable but not guaranteed.

Listing information last updated on October 14th, 2025 at 2:19pm MDT