

\$594,900 - 1201 N Bar Line Ct., Nampa

MLS® #98941736

\$594,900

4 Bedroom, 3.00 Bathroom, 1,912 sqft

Residential on 1.35 Acres

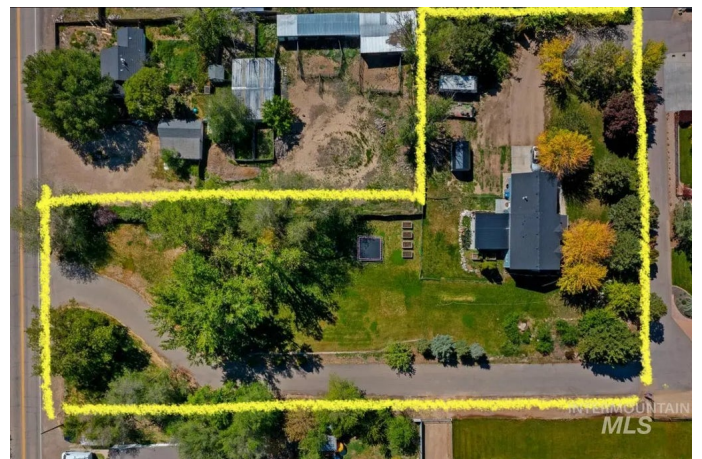
Home Acres, Nampa, ID

The perfect IDAHO retreat!!! Freedom of NO HOA. A peaceful front & back porch ready to enjoy the cool, crisp autumn breezes. Remodeled (Kitchen, bathrooms, flooring, interior & exterior paint, lighting & plumbing fixtures). Kitchen is spacious w/ an oversized island ready for you to host your next gathering. 4 generous sized bedrooms. Laundry space on main floor. The lot is spacious & tucked away on a private cul-de-sac w/ mature landscaping, a producing garden area + fruit trees (red & green baking apple, peach). Imagine setting up a fruit & vegetable stand at the road to share your produce! Plenty of room to store your toys, build a shop, bring your animals + more. Oversized moveable storage shed is a bonus w/ unlimited possibilities for you to personalize + 2 car attached garage (potential living space, if needed). Property is located out of city limits.

Built in 2003

Essential Information

MLS® #	98941736
Price Per SQFT	\$311
Bedrooms	4
Bathrooms	3.00
Square Footage	1,912
Acres	1.35
Year Built	2003
Type	Residential



Sub-Type	Single Family w/ Acreage
Status	Active

Community Information

Address	1201 N Bar Line Ct.
Area	Nampa NE (87) - 1250
Subdivision	Home Acres
City	Nampa
County	Canyon
State	ID
Zip Code	83687

Amenities

Parking Spaces	2
Parking	Attached, RV Access/Parking
# of Garages	2
Waterfront	Creek/Stream
RV/Boat Parking	Yes
Golf Course	N
Virtual Tour	https://youriguide.com/embed/1201_n_barline_court_nampa_id?unbranded=1&bgcolor=FFFFFF

Interior

Interior Features	Bath-Master, Great Room, Double Vanity, Walk-In Closet(s), Breakfast Bar, Kitchen Island, Quartz Counters
Appliances	Tank Water Heater, Dishwasher, Disposal, Microwave
Heating	Forced Air
Cooling	Central Air
Fireplace	Yes
Fireplaces	One
Stories	Two

Exterior

Lot Description	1 - 4.99 AC, R.V. Parking, Chickens, Manual Sprinkler System, Partial Sprinkler System
Roof	Composition
Foundation	Crawl Space

School Information

District	Nampa School District #131
----------	----------------------------

Elementary	Endeavor Nampa
Middle	East Valley Mid
High	Columbia

Additional Information

Date Listed	April 4th, 2025
Days on Market	169
Property Taxes	\$1,387
Tax Year	2024
Office	State Street Realty Group
Contact Info	brent@statestreetrealestate.com

Listing Details

Listing Office	State Street Realty Group
----------------	---------------------------



IDX information is provided exclusively for consumers' personal, non-commercial use, and may not be used for any purpose other than to identify prospective properties consumers may be interested in purchasing. IMLS does not assume any liability for missing or inaccurate data. Information provided by IMLS is deemed reliable but not guaranteed.

Listing information last updated on October 11th, 2025 at 7:18pm MDT