

\$479,990 - 8186 E Bright Angel Dr, Nampa

MLS® #98940962

\$479,990

4 Bedroom, 2.00 Bathroom, 2,023 sqft
Residential on 0.18 Acres

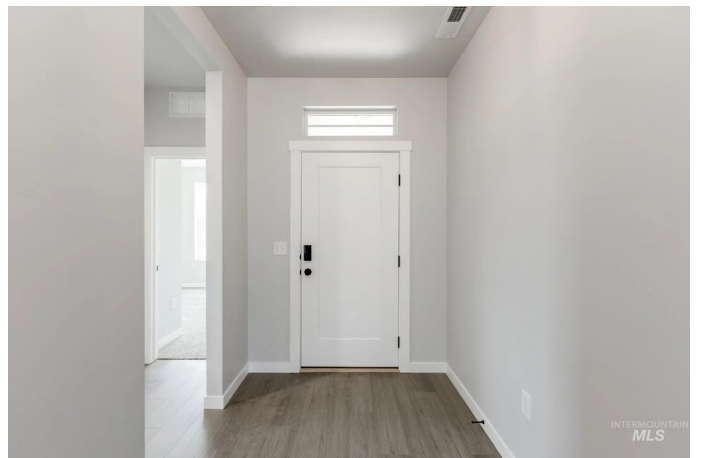
East Ridgevue Estates, Nampa, ID

Fall in Love with Low Rates! Promotional rate as low as 2.99%. Ask a Sales Specialist for details! Embrace the comforts of a brand new home in Nampa, Idaho. The search for an expansive single-level 4-bedroom home ends with the Kobi 2023. The 4 spacious bedrooms are cleverly situated throughout the home to create a secluded space for everyone. The entryway leads to the heart of the home, where 9ft ceilings throughout and a well-appointed kitchen stainless steel appliances and stylish solid surface countertops, adding both functionality and aesthetics to the kitchen. The primary suite is tucked at the rear corner of the home and equipped with a luxurious en suite bath and walk-in closet. With additional storage options throughout and a convenient laundry room nearby, organization is a breeze. Potential RV parking available. Photos are of the actual home!

Built in 2025

Essential Information

MLS® #	98940962
Price Per SQFT	\$237
Bedrooms	4
Bathrooms	2.00
Square Footage	2,023
Acres	0.18
Year Built	2025



Type	Residential
Sub-Type	Single Family Residence
Status	Price Change

Community Information

Address	8186 E Bright Angel Dr
Area	Caldwell NW - 1275
Subdivision	East Ridgevue Estates
City	Nampa
County	Canyon
State	ID
Zip Code	83687
Builder	CBH Homes

Amenities

Utilities	Sewer Connected
Parking Spaces	3
Parking	Attached
# of Garages	3
Golf Course	N

Interior

Interior Features	Bath-Master, Split Bedroom, Great Room, Double Vanity, Walk-In Closet(s), Breakfast Bar, Pantry, Kitchen Island, Solid Surface Counters
Appliances	Gas Water Heater, Disposal, Microwave, Oven/Range Freestanding
Heating	Forced Air, Natural Gas
Cooling	Central Air
Stories	One
Primary On Main	Yes

Exterior

Lot Description	Standard Lot 6000-9999 SF, Irrigation Available, Sidewalks, Auto Sprinkler System, Partial Sprinkler System, Pressurized Irrigation Sprinkler System, Irrigation Sprinkler System
Roof	Composition

School Information

District	Vallivue School District #139
Elementary	East Canyon
Middle	Sage Valley

High Ridgevue

Additional Information

Date Listed March 31st, 2025
Days on Market 193
HOA Fees \$850
HOA Fees Freq. Annually
New Construction Yes
Tax Year 2024
Office CBH Sales & Marketing Inc
Contact Info tarak@cbhhomes.com

Listing Details

Listing Office CBH Sales & Marketing Inc



IDX information is provided exclusively for consumers' personal, non-commercial use, and may not be used for any purpose other than to identify prospective properties consumers may be interested in purchasing. IMLS does not assume any liability for missing or inaccurate data. Information provided by IMLS is deemed reliable but not guaranteed.

Listing information last updated on October 11th, 2025 at 9:33pm MDT