

# \$1,240,000 - 817 N Gracie Avenue #lot 1/4, Eagle

MLS® #98940085

**\$1,240,000**

3 Bedroom, 4.00 Bathroom, 3,072 sqft

Residential on 0.29 Acres

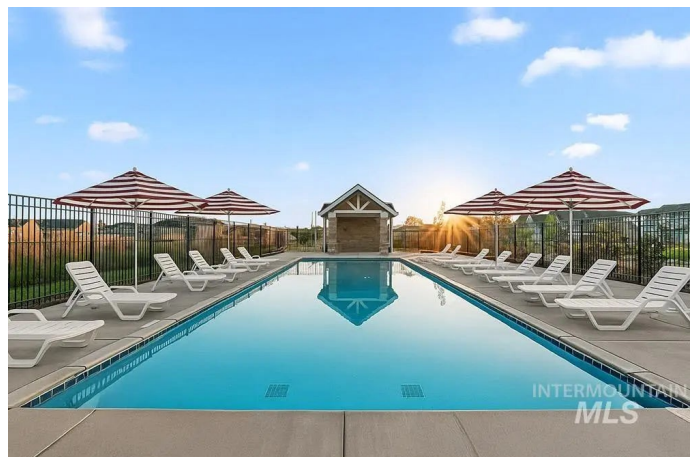
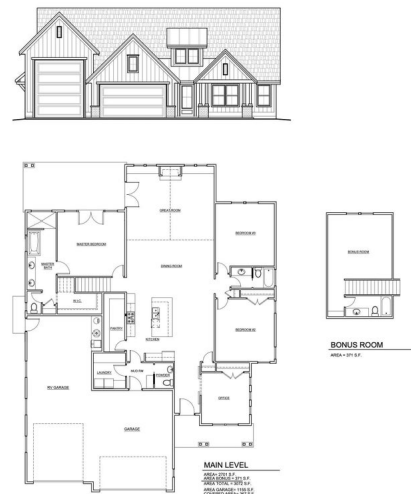
Centerra, Eagle, ID

The Mayne design by Oakmont Homes offers stunning single-level living with an upstairs bonus room and RV garage! This thoughtfully designed floorplan features a flowing open concept, main-level office, and split bedroom layout for convenience. Beautiful engineered hardwood floors span the main level. The luxury kitchen showcases Calacatta quartz countertops and backsplash and shaker-style cabinets with sleek black hardware. High-end Bosch appliances include a dual oven, gas cooktop, and microwave drawer. The primary suite features a stunning accent wall with board and batten detailing, a spa-like en suite with a freestanding soaker tub, dual vanities, black Delta hardware, and a spacious walk-in closet. Stunning designer light fixtures add luxury to every room. The versatile upstairs bonus room can serve as a 4th bedroom with an en suite bathroom. Located in the vibrant Centerra community with a community pool, walking paths, and open park space – just minutes from Eagle amenities!

Built in 2025

## Essential Information

MLS® #	98940085
Price Per SQFT	\$404
Bedrooms	3
Bathrooms	4.00
Square Footage	3,072



Acres	0.29
Year Built	2025
Type	Residential
Sub-Type	Single Family Residence
Status	Active

### Community Information

Address	817 N Gracie Avenue #lot 1/4
Area	Eagle - 0900
Subdivision	Centerra
City	Eagle
County	Ada
State	ID
Zip Code	83616
Builder	Oakmont

### Amenities

Utilities	Sewer Connected
Parking Spaces	4
Parking	Attached, RV Access/Parking, Finished Driveway
# of Garages	4
Has Pool	Yes
Pool	Community
RV/Boat Parking	Yes
Golf Course	N

### Interior

Interior Features	Bath-Master, Bed-Master Main Level, Split Bedroom, Den/Office, Great Room, Rec/Bonus, Walk-In Closet(s), Breakfast Bar, Pantry, Kitchen Island, Quartz Counters
Appliances	Gas Water Heater, Tank Water Heater, Dishwasher, Disposal, Double Oven, Microwave, Oven/Range Built-In, Gas Range
Heating	Forced Air, Natural Gas
Cooling	Central Air
Fireplace	Yes
Fireplaces	One, Gas
Stories	One
Primary On Main	Yes

### Exterior

Lot Description	10000 SF - .49 AC, Irrigation Available, Sidewalks, Irrigation Sprinkler System
Roof	Composition

**School Information**

District	West Ada School District
Elementary	Eagle
Middle	Eagle Middle
High	Eagle

**Additional Information**

Date Listed	March 22nd, 2025
Days on Market	177
HOA Fees	\$550
HOA Fees Freq.	Quarterly
New Construction	Yes
Tax Year	2024
Office	Amherst Madison
Contact Info	mike@amherst-madison.com

**Listing Details**

Listing Office	Amherst Madison
----------------	-----------------



IDX information is provided exclusively for consumers' personal, non-commercial use, and may not be used for any purpose other than to identify prospective properties consumers may be interested in purchasing. IMLS does not assume any liability for missing or inaccurate data. Information provided by IMLS is deemed reliable but not guaranteed.

Listing information last updated on October 14th, 2025 at 1:03am MDT