

# \$350,000 - 9 Golden Court, Boise

MLS® #98939894

## \$350,000

1 Bedroom, 1.00 Bathroom, 1,152 sqft

Residential on 2.60 Acres

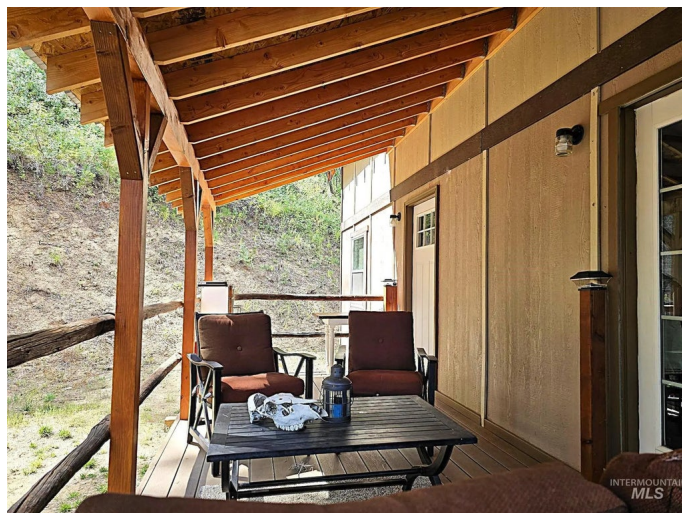
0 Not Applicable, Boise, ID

Escape to your very own peaceful retreat in the Boise Mountains located at 9 GOLDEN COURT! This charming 1-bed, 1-bath, 1152 sqft cabin offers the perfect blend of seclusion and comfort, sitting on a serene 2.60-acre property at the end of a private drive. Built in 2018, the cabin features a spacious covered front porch where you can enjoy breathtaking mountain views & the natural beauty surrounding you. Inside, you'll find propane heat and a modern tankless water heater, ensuring warmth and comfort year-round. The property also boasts two wells, making it self-sufficient and ideal for your off-grid lifestyle. Wildlife enthusiasts will love the frequent visits from deer, elk, & turkeys, who roam freely across the property, adding a touch of nature's wonder to your everyday life. Whether you're seeking a weekend getaway or a peaceful home in the woods, this cabin offers the ultimate in privacy and tranquility. Come experience mountain living at its finest.

Built in 2018

## Essential Information

MLS® #	98939894
Price Per SQFT	\$304
Bedrooms	1
Bathrooms	1.00
Square Footage	1,152



Acres	2.60
Year Built	2018
Type	Residential
Sub-Type	Recreational Land w/ Home
Status	Active

### **Community Information**

Address	9 Golden Court
Area	East Boise County - 1450
Subdivision	0 Not Applicable
City	Boise
County	Boise
State	ID
Zip Code	83716

### **Amenities**

Parking	RV Access/Parking
RV/Boat Parking	Yes
View	Yes
Golf Course	N

### **Interior**

Interior Features	Loft, Wood/Butcher Block Counters
Appliances	Tankless Water Heater
Heating	Propane
Fireplace	Yes
Fireplaces	One, Propane
Stories	Two

### **Exterior**

Lot Description	1 - 4.99 AC, R.V. Parking, Views, Rolling Slope, Steep Slope, Wooded
Roof	Metal

### **School Information**

District	Basin School District #72
Elementary	Basin
Middle	Basin
High	Basin

### **Additional Information**

Date Listed	March 21st, 2025
Days on Market	171
Property Taxes	\$861
Tax Year	2024
Structures	Storage Shed
Office	Pinnacle Real Estate LLC
Contact Info	david@pinnacleofidaho.com

### **Listing Details**

Listing Office	Pinnacle Real Estate LLC
----------------	--------------------------



IDX information is provided exclusively for consumers' personal, non-commercial use, and may not be used for any purpose other than to identify prospective properties consumers may be interested in purchasing. IMLS does not assume any liability for missing or inaccurate data. Information provided by IMLS is deemed reliable but not guaranteed.

Listing information last updated on October 15th, 2025 at 1:33am MDT