

\$579,800 - 2121 E Reem Dr, Meridian

MLS® #98939598

\$579,800

3 Bedroom, 3.00 Bathroom, 2,049 sqft
Residential on 0.10 Acres

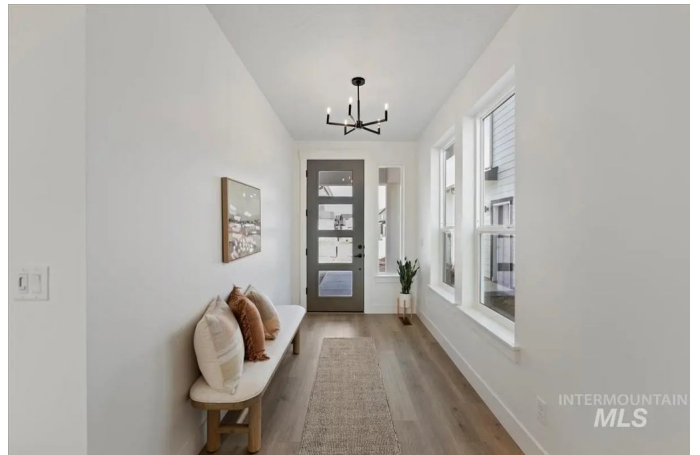
Pine 43, Meridian, ID

Welcome to the Carlisle II by Hammett Homes. This home is located in an incredible area of Meridian Idaho close to The Village which features shopping, entertainment, fine dining, and so much more. Nestled in the amazing community of Pine 43 which features a community pool and sport courts. This home sits along a common area with a community pond behind it for incredible outdoor views from the patio and primary bedroom upstairs. This home features many upgrades including quartz counters in the kitchen and all bathrooms, durable laminate floors, Bosch appliances, tile walk in shower, undermount sinks, Moen faucets, and Hammett Homes signature backlit mirrors in the primary and powder bath. There is a tech office on the main level and a loft space upstairs along with the primary suite, 2 additional bedrooms, and the laundry room. There is also a 3 car garage which is very rare for this community. Don't miss out on this new home. We only one more left on the pond!

Built in 2025

Essential Information

MLS® #	98939598
Price Per SQFT	\$283
Bedrooms	3
Bathrooms	3.00
Square Footage	2,049



Acres	0.10
Year Built	2025
Type	Residential
Sub-Type	Single Family Residence
Status	Active

Community Information

Address	2121 E Reem Dr
Area	Meridian NE - Boise NW - 1020
Subdivision	Pine 43
City	Meridian
County	Ada
State	ID
Zip Code	83642
Builder	HAMMETT HOMES

Amenities

Utilities	Sewer Connected
Parking Spaces	3
Parking	Attached, Finished Driveway
# of Garages	3
Is Waterfront	Yes
Waterfront	Waterfront
Has Pool	Yes
Pool	Community
View	Yes
Golf Course	N
Virtual Tour	https://unbranded.youriguide.com/2121_e_reem_dr_meridian_id/

Interior

Interior Features	Split Bedroom, Den/Office, Great Room, Double Vanity, Central Vacuum Plumbed, Walk-In Closet(s), Pantry, Kitchen Island, Quartz Counters
Appliances	Gas Water Heater, Tank Water Heater, Dishwasher, Disposal, Microwave, Oven/Range Freestanding, Gas Range
Heating	Forced Air, Natural Gas
Cooling	Central Air
Stories	Two

Exterior

Lot Description	Sm Lot 5999 SF, Irrigation Available, Sidewalks, Views, Full Sprinkler System, Pressurized Irrigation Sprinkler System
Roof	Composition

School Information

District	West Ada School District
Elementary	River Valley
Middle	Lewis and Clark
High	Centennial

Additional Information

Date Listed	March 19th, 2025
Days on Market	122
HOA Fees	\$250
HOA Fees Freq.	Quarterly
New Construction	Yes
Tax Year	2024
Office	Silvercreek Realty Group
Contact Info	broker@silvercreekrealty.com

Listing Details

Listing Office	Silvercreek Realty Group
----------------	--------------------------



IDX information is provided exclusively for consumers' personal, non-commercial use, and may not be used for any purpose other than to identify prospective properties consumers may be interested in purchasing. IMLS does not assume any liability for missing or inaccurate data. Information provided by IMLS is deemed reliable but not guaranteed.

Listing information last updated on October 14th, 2025 at 2:04pm MDT