

\$0 - Tbd W Grover St, Boise

MLS® #98939069

\$0

4 Bedroom, 3.00 Bathroom, 2,454 sqft

Residential on 0.13 Acres

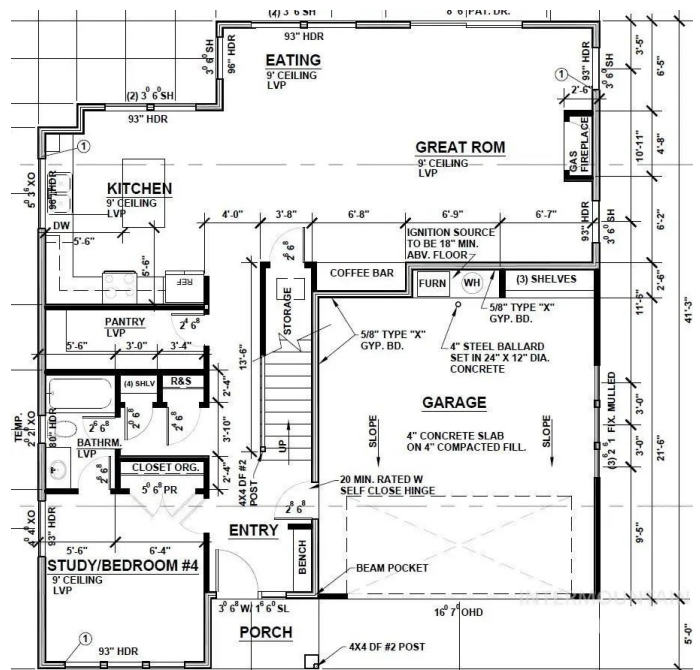
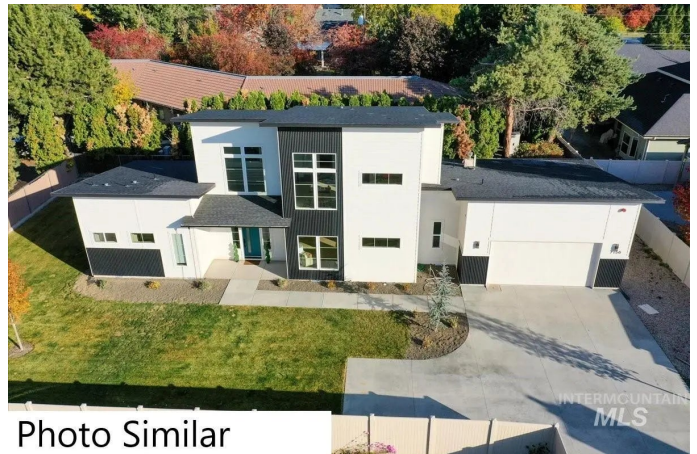
Simunich/Mike S, Boise, ID

Say No to the commute, and Yes to a stunning new construction home, offering luxury living in the heart of Boise. No details are overlooked on the workmanship with local builder Kouba Homes. Floor to ceiling tile accented fireplace, vaulted ceilings, & double story windows lining the walls to capture the views of lush foliage. Spend your evenings relaxing on the north facing covered patio, listening to the water flowing by & watching the wildlife. The idyllic layout offers a great room opening up to an expansive kitchen with island, quartz counters, locally built Euro-cabinetry, pantry. Plenty of flex space with 4 bedrooms, 3 bath + bonus room overlooking the canal, lined with old growth shade trees, including a guest suite on the main level. Spa like primary suite offers oversized closet, dual vanities, & walk-in shower. Warm tones, LVP, & stylish tilework complement this inviting home, tucked away off the street, on the northeast corner lot backing to canal, driveway directly W of 5610 Grover st.

Built in 2025

Essential Information

MLS® #	98939069
Bedrooms	4
Bathrooms	3.00
Square Footage	2,454
Acres	0.13



Year Built	2025
Type	Residential
Sub-Type	Single Family Residence
Status	No Price New Construction

Community Information

Address	Tbd W Grover St
Area	Boise Bench - 0400
Subdivision	Simunich/Mike S
City	Boise
County	Ada
State	ID
Zip Code	83705
Builder	Kouba Homes

Amenities

Utilities	Sewer Connected
Parking Spaces	2
Parking	Attached, Electric Vehicle Charging Station(s)
# of Garages	2
Is Waterfront	Yes
Waterfront	Waterfront
Golf Course	N

Interior

Interior Features	Bath-Master, Rec/Bonus, Double Vanity, Walk-In Closet(s), Pantry, Kitchen Island, Quartz Counters
Appliances	Tank Water Heater, Dishwasher, Disposal, Oven/Range Built-In, Gas Range
Heating	Forced Air, Natural Gas
Cooling	Central Air
Fireplace	Yes
Fireplaces	One, Gas
Stories	Two

Exterior

Lot Description	Sm Lot 5999 SF, Garden, Auto Sprinkler System, Full Sprinkler System
Roof	Architectural Style

School Information

District Boise School District #1
Elementary Hillcrest
Middle South (Boise)
High Borah

Additional Information

Date Listed March 14th, 2025
Zoning R-1C
New Construction Yes
Tax Year 2024
Office RE/MAX Capital City
Contact Info bmayerseo@msn.com

Listing Details

Listing Office RE/MAX Capital City



IDX information is provided exclusively for consumers' personal, non-commercial use, and may not be used for any purpose other than to identify prospective properties consumers may be interested in purchasing. IMLS does not assume any liability for missing or inaccurate data. Information provided by IMLS is deemed reliable but not guaranteed.

Listing information last updated on October 14th, 2025 at 4:48pm MDT

