

# \$594,900 - 4588 N Alameda Creek Ave, Meridian

MLS® #98938771

**\$594,900**

3 Bedroom, 3.00 Bathroom, 2,039 sqft  
Residential on 0.13 Acres

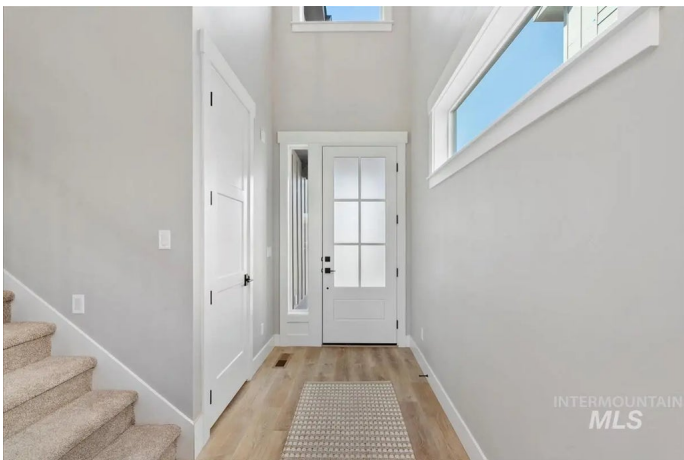
Lincoln Creek, Meridian, ID

For a limited time 3.99% FHA financing! Save over \$48,000 in payments in your first 5 years alone vs. 30 year fixed rate at 6.25%\* The Rutland by Biltmore Company LLC is a beautifully designed home blending modern comfort with functional living. This stunning two-story home features three spacious upstairs bedrooms and 2.5 baths. A dedicated main-level office provides the perfect workspace for remote work or quiet study. The heart of the home is the inviting great room, complete with a cozy gas fireplace. The kitchen is a chef’s dream, equipped with high-end appliances, including double ovens. Step outside to enjoy the fully fenced backyard with a covered patio—perfect for outdoor gatherings or peaceful evenings. Lincoln Creek offers a state-of-the-art clubhouse including a dog wash station, community pool, social areas, pickleball court, acres of open space and much more.

Built in 2025

## Essential Information

MLS® #	98938771
Price Per SQFT	\$292
Bedrooms	3
Bathrooms	3.00
Square Footage	2,039
Acres	0.13
Year Built	2025



Type	Residential
Sub-Type	Single Family Residence
Status	Active

### Community Information

Address	4588 N Alameda Creek Ave
Area	Meridian NW - 1030
Subdivision	Lincoln Creek
City	Meridian
County	Ada
State	ID
Zip Code	83646
Builder	Biltmore Company LLC

### Amenities

Utilities	Sewer Connected
Parking Spaces	3
Parking	Attached, Finished Driveway
# of Garages	3
Has Pool	Yes
Pool	Community, In Ground, Pool
Golf Course	N
Virtual Tour	<a href="https://sunnyskies.media/4588-N-Alameda-Crk-Ave/idx">https://sunnyskies.media/4588-N-Alameda-Crk-Ave/idx</a>

### Interior

Interior Features	Bath-Master, Den/Office, Great Room, Double Vanity, Walk-In Closet(s), Breakfast Bar, Pantry, Kitchen Island, Quartz Counters
Appliances	Gas Water Heater, ENERGY STAR Qualified Water Heater, Tank Water Heater, Dishwasher, Disposal, Double Oven, Microwave, Oven/Range Built-In, Gas Oven, Gas Range
Heating	Forced Air, Natural Gas
Cooling	Central Air
Fireplace	Yes
Fireplaces	One, Gas
Stories	Two

### Exterior

Lot Description	Sm Lot 5999 SF, Irrigation Available, Sidewalks, Auto Sprinkler System, Drip Sprinkler System, Full Sprinkler System, Pressurized Irrigation Sprinkler System
-----------------	---

Roof	Composition, Architectural Style
Foundation	Crawl Space

### School Information

District	West Ada School District
Elementary	Pleasant View
Middle	Star
High	Owyhee

### Additional Information

Date Listed	March 12th, 2025
Days on Market	203
HOA Fees	\$400
HOA Fees Freq.	Semi-Annually
New Construction	Yes
Tax Year	2024
Office	Silvercreek Realty Group
Contact Info	broker@silvercreekrealty.com

### Listing Details

Listing Office	Silvercreek Realty Group
----------------	--------------------------



IDX information is provided exclusively for consumers' personal, non-commercial use, and may not be used for any purpose other than to identify prospective properties consumers may be interested in purchasing. IMLS does not assume any liability for missing or inaccurate data. Information provided by IMLS is deemed reliable but not guaranteed.

Listing information last updated on October 15th, 2025 at 9:03am MDT