

\$0 - Tbd W Grover St, Boise

MLS® #98938720

\$0

3 Bedroom, 3.00 Bathroom, 1,874 sqft
Residential on 0.19 Acres

Simunich/Mike S, Boise, ID

Urban Idaho living at its best. No need to compromise location for modern amenities with this new construction home in the heart of the Bench. Just minutes to downtown & **FOUR** car garage, including RV BAY. The 12x12 RV garage door accesses the double deep bay, including 220V power. No HOA/CCRs in this quiet pocket on the Bench allow the freedom to make this space your own. Attention to detail exudes throughout the design & floorplan, w/every accent thoughtfully chosen. Nature inspired finishes paired w/warm tilework, floor to ceiling windows, wide planked LVP, & flat paneled cabinetry. Great room opens to open kitchen w/island, high-end appliances, pantry w/chef's designed functionality. Soaring ceilings open up to a bonus room, generous guest rooms & expansive primary w/walk-in closet. Smartly sized yard offers a covered patio nestled in this private, fully fenced escape. This stunning new home comes to you by Kouba Homes, locally owned & operated for 20 years. Located behind the existing home at 5610 Grover.

Built in 2025

Essential Information

MLS® #	98938720
Bedrooms	3
Bathrooms	3.00



Photo Similar



Photo Similar

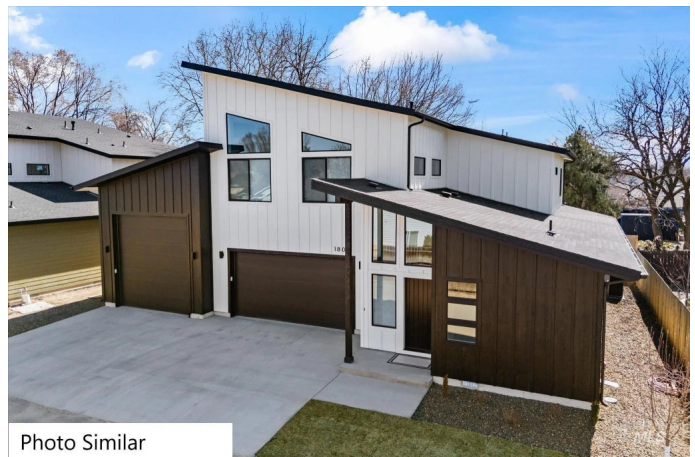


Photo Similar

Square Footage	1,874
Acres	0.19
Year Built	2025
Type	Residential
Sub-Type	Single Family Residence
Status	No Price New Construction

Community Information

Address	Tbd W Grover St
Area	Boise Bench - 0400
Subdivision	Simunich/Mike S
City	Boise
County	Ada
State	ID
Zip Code	83705
Builder	Kouba Homes

Amenities

Utilities	Sewer Connected
Parking Spaces	4
Parking	RV/Boat, Attached, RV Access/Parking, Electric Vehicle Charging Station(s)
# of Garages	4
RV/Boat Parking	Yes
Golf Course	N

Interior

Interior Features	Bath-Master, Great Room, Rec/Bonus, Double Vanity, Walk-In Closet(s), Pantry, Kitchen Island, Quartz Counters
Appliances	Tank Water Heater, Dishwasher, Disposal, Oven/Range Built-In, Gas Range
Heating	Forced Air, Natural Gas
Cooling	Central Air
Stories	Two

Exterior

Lot Description	Standard Lot 6000-9999 SF, Garden, R.V. Parking, Auto Sprinkler System, Full Sprinkler System
Roof	Architectural Style

School Information

District	Boise School District #1
Elementary	Hillcrest
Middle	South (Boise)
High	Borah

Additional Information

Date Listed	March 12th, 2025
Zoning	R-1C
New Construction	Yes
Tax Year	2024
Structures	Shop
Office	RE/MAX Capital City
Contact Info	bmayesreo@msn.com

Listing Details

Listing Office	RE/MAX Capital City
----------------	---------------------



IDX information is provided exclusively for consumers' personal, non-commercial use, and may not be used for any purpose other than to identify prospective properties consumers may be interested in purchasing. IMLS does not assume any liability for missing or inaccurate data. Information provided by IMLS is deemed reliable but not guaranteed.

Listing information last updated on October 14th, 2025 at 4:48pm MDT