

# \$0 - Tbd N Ash Park Ln, Boise

MLS® #98938190

**\$0**

4 Bedroom, 4.00 Bathroom, 2,438 sqft  
Residential on 0.19 Acres

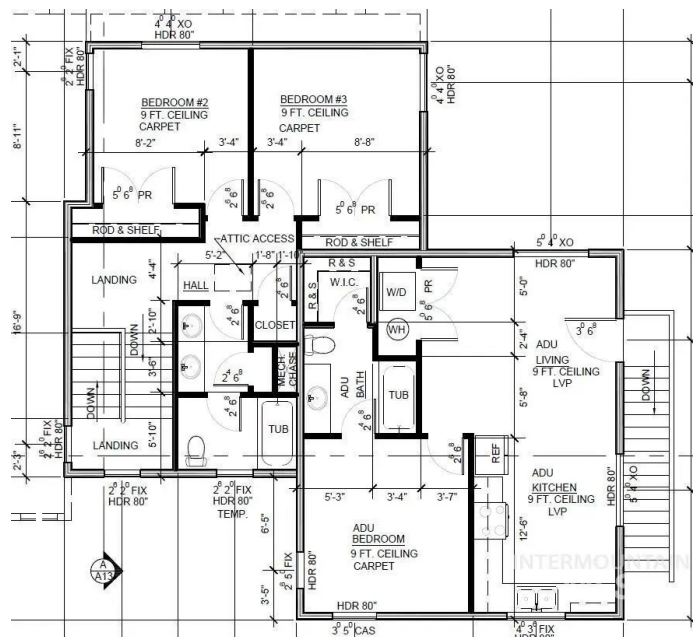
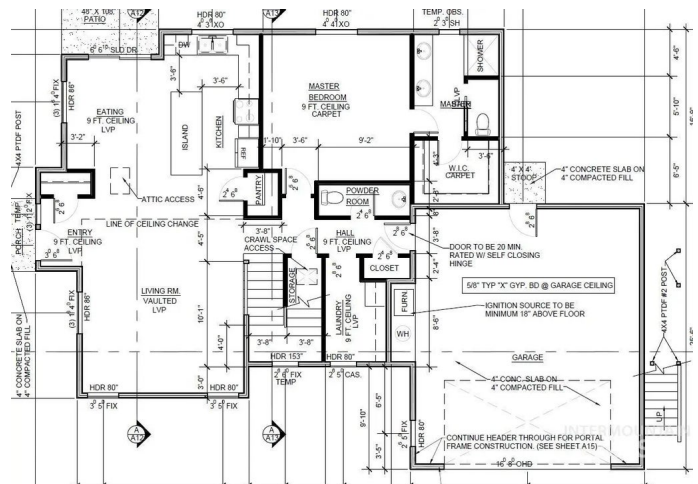
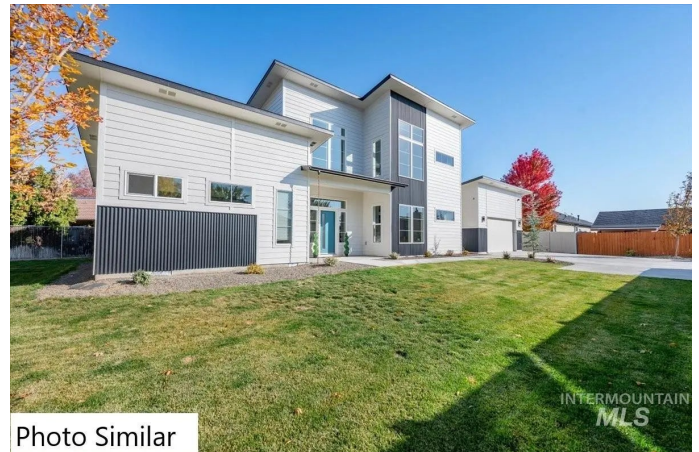
Downend, Boise, ID

Brand new home with ADU, centrally located, walking distance to restaurants, shopping, parks, schools, & community pools. This Kouba Homes custom designed, new construction opens doors for uniquely affordable living options. Take advantage of the potential income of renting the spacious, detached living quarters with full bathroom and separate bedroom, or as a space for multi-generational lifestyles, or as a dream home office. The smart floorplan of the primary home features plenty of space with 4 full bedrooms, & the primary suite on the main level, along with a powder room & open great room. Finishes were hand picked by a local designer, specializing in the perfect blend of warm & inviting, yet sophisticated & chic. Spacious kitchen with quartz counters, island, & pantry, plus LVP & contemporary tilework throughout. Quality workmanship shines through. Kouba Homes, locally owned and operated for over 20 years, specializing in meeting the needs & wants of Boise's urban outdoor community.

Built in 2025

## Essential Information

MLS® #	98938190
Bedrooms	4
Bathrooms	4.00
Square Footage	2,438



Acres	0.19
Year Built	2025
Type	Residential
Sub-Type	Single Family Residence
Status	No Price New Construction

### Community Information

Address	Tbd N Ash Park Ln
Area	Boise West - 0600
Subdivision	Downend
City	Boise
County	Ada
State	ID
Zip Code	83704
Builder	Kouba Homes

### Amenities

Utilities	Sewer Connected
Parking Spaces	2
Parking	Attached, Electric Vehicle Charging Station(s)
# of Garages	2
Golf Course	N

### Interior

Interior Features	Bath-Master, Bed-Master Main Level, Great Room, Two Kitchens, Double Vanity, Walk-In Closet(s), Breakfast Bar, Pantry, Kitchen Island, Quartz Counters
Appliances	Tank Water Heater, Dishwasher, Disposal, Oven/Range Built-In, Gas Range
Heating	Forced Air, Natural Gas
Cooling	Central Air
Stories	Two
Primary On Main	Yes

### Exterior

Lot Description	Standard Lot 6000-9999 SF, Garden, Corner Lot, Auto Sprinkler System, Full Sprinkler System
Roof	Architectural Style
Foundation	Crawl Space

**School Information**

District	Boise School District #1
Elementary	Morley Nelson
Middle	Fairmont
High	Capital

**Additional Information**

Date Listed	March 7th, 2025
Zoning	R-1C
New Construction	Yes
Property Taxes	\$1,289
Tax Year	2024
Structures	Sep. Detached Dwelling, Sep. Detached w/Kitchen, Separate Living Quarters
Office	RE/MAX Capital City
Contact Info	bmayesreo@msn.com

**Listing Details**

Listing Office	RE/MAX Capital City
----------------	---------------------



IDX information is provided exclusively for consumers' personal, non-commercial use, and may not be used for any purpose other than to identify prospective properties consumers may be interested in purchasing. IMLS does not assume any liability for missing or inaccurate data. Information provided by IMLS is deemed reliable but not guaranteed.

Listing information last updated on October 15th, 2025 at 12:33pm MDT