

# \$359,990 - 523 N Lucy Lane, Nampa

MLS® #98937439

## \$359,990

3 Bedroom, 3.00 Bathroom, 1,411 sqft  
Residential on 0.05 Acres

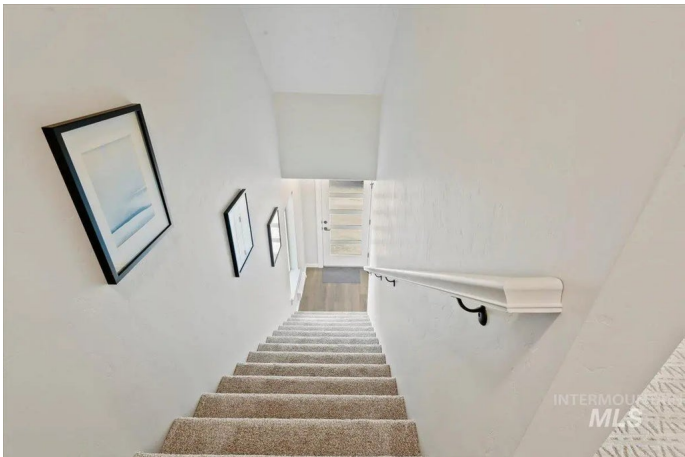
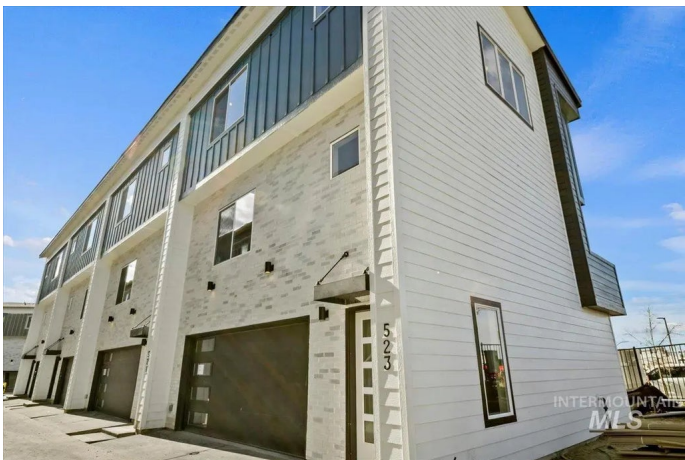
### Diamond Peak Townhomes, Nampa, ID

Diamond Peak Townhomes â€” Modern Design, Prime Location Welcome to Diamond Peak Townhomes, a boutique community of 16 modern, three-level residences designed for style and convenience. The main level features a spacious two-car garage with direct access to the second floor. Here, an open-concept kitchen with quartz countertops and stainless steel appliances flows into the great room, dining area, desk space, and a powder bathâ€”perfect for everyday living. On the top floor, the primary suite boasts an en-suite bath, while two additional bedrooms, a second full bath, and a laundry closet add comfort and functionality. Located near freeway access, shopping, and dining, Diamond Peak Townhomes offer a low-maintenance, lock-and-leave lifestyle. With minimal yard upkeep and HOA-managed exteriors, youâ€™ll spend less time on chores and more time enjoying your home. Experience modern living in a prime locationâ€”welcome to Diamond Peak Townhomes!

Built in 2025

### Essential Information

MLS® #	98937439
Price Per SQFT	\$255
Bedrooms	3
Bathrooms	3.00



Square Footage	1,411
Acres	0.05
Year Built	2025
Type	Residential
Sub-Type	Townhouse
Status	Active

### Community Information

Address	523 N Lucy Lane
Area	Nampa South (86) - 1260
Subdivision	Diamond Peak Townhomes
City	Nampa
County	Canyon
State	ID
Zip Code	83687

### Amenities

Utilities	Sewer Connected
Parking Spaces	2
Parking	Attached
# of Garages	2
Golf Course	N
Virtual Tour	<a href="https://360idaho.tf.media/x2013562">https://360idaho.tf.media/x2013562</a>

### Interior

Interior Features	Bath-Master, Great Room, Walk-In Closet(s), Pantry, Quartz Counters
Appliances	Gas Water Heater, Dishwasher, Disposal, Microwave, Oven/Range Freestanding, Gas Range
Heating	Forced Air, Natural Gas
Cooling	Central Air
Stories	Tri-Level

### Exterior

Lot Description	Sm Lot 5999 SF
Roof	Architectural Style

### School Information

District	Nampa School District #131
Elementary	Endeavor Nampa

Middle	East Valley Mid
High	Columbia

### Additional Information

Date Listed	February 28th, 2025
Days on Market	179
HOA Fees	\$100
HOA Fees Freq.	Monthly
New Construction	Yes
Property Taxes	\$602
Tax Year	2024
Office	Element Group Realty LLC
Contact Info	thegregdavisteam@gmail.com

### Listing Details

Listing Office	Element Group Realty LLC
----------------	--------------------------



IDX information is provided exclusively for consumers' personal, non-commercial use, and may not be used for any purpose other than to identify prospective properties consumers may be interested in purchasing. IMLS does not assume any liability for missing or inaccurate data. Information provided by IMLS is deemed reliable but not guaranteed.

Listing information last updated on October 11th, 2025 at 5:48pm MDT