

\$490,990 - 8172 E Red Horse St, Nampa

MLS® #98936829

\$490,990

4 Bedroom, 2.00 Bathroom, 2,100 sqft

Residential on 0.17 Acres

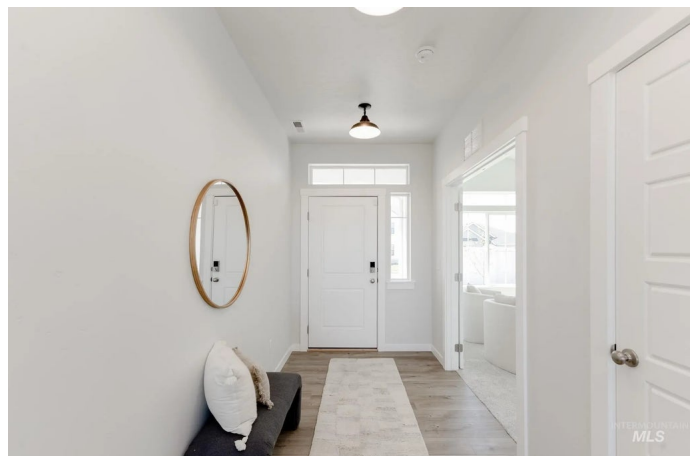
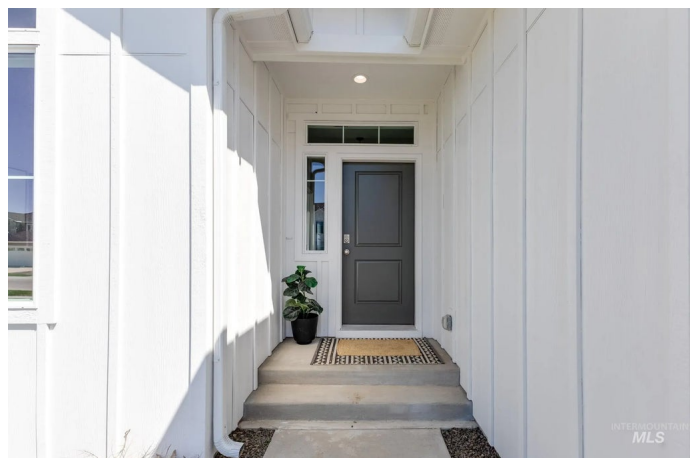
East Ridgevue Estates, Nampa, ID

Fall in Love with Low Rates! Promotional rate as low as 2.99%. Ask a Sales Specialist for details! This brand new home located in vibrant Nampa, Idaho welcomes you with open arms. Enter into single level perfection with the Monterey 2100. Refrigerator is included with the home! The entryway ushers you to the heart of the home where a bright living room, spacious kitchen, and airy dining room await. The modern great room design combined with 9ft. ceilings throughout is ideal for entertaining, where you can access the full kitchen and its upgraded finishes, including stainless steel appliances, a gas range, and stylish solid surface countertops. The primary suite is an escape-worthy experience with a luxurious en suite bathroom and features a walk-in shower & separate soaker tub! The back patio is an open invitation to relax and enjoy your life in the Monterey. Photos are of the actual home!

Built in 2025

Essential Information

MLS® #	98936829
Price Per SQFT	\$234
Bedrooms	4
Bathrooms	2.00
Square Footage	2,100
Acres	0.17
Year Built	2025
Type	Residential



Sub-Type	Single Family Residence
Status	Price Change

Community Information

Address	8172 E Red Horse St
Area	Caldwell NW - 1275
Subdivision	East Ridgevue Estates
City	Nampa
County	Canyon
State	ID
Zip Code	83687
Builder	CBH Homes

Amenities

Utilities	Sewer Connected
Parking Spaces	3
Parking	Attached
# of Garages	3
Golf Course	N
Virtual Tour	https://my.matterport.com/show/?m=zeNTe7kJPVN&mls=1

Interior

Interior Features	Bath-Master, Bed-Master Main Level, Family Room, Double Vanity, Walk-In Closet(s), Loft, Breakfast Bar, Pantry, Kitchen Island, Solid Surface Counters
Appliances	Gas Water Heater, Dishwasher, Disposal, Microwave, Oven/Range Freestanding, Refrigerator, Gas Range
Heating	Forced Air, Natural Gas
Cooling	Central Air
Fireplace	Yes
Fireplaces	One, Gas, Insert
Stories	One
Primary On Main	Yes

Exterior

Lot Description	Standard Lot 6000-9999 SF, Sidewalks, Auto Sprinkler System, Partial Sprinkler System, Pressurized Irrigation Sprinkler System
Roof	Composition

School Information

District	Vallivue School District #139
Elementary	East Canyon
Middle	Sage Valley
High	Ridgevue

Additional Information

Date Listed	February 24th, 2025
Days on Market	228
HOA Fees	\$850
HOA Fees Freq.	Annually
New Construction	Yes
Tax Year	2024
Office	CBH Sales & Marketing Inc
Contact Info	tarak@cbhhomes.com

Listing Details

Listing Office	CBH Sales & Marketing Inc
----------------	---------------------------



IDX information is provided exclusively for consumers' personal, non-commercial use, and may not be used for any purpose other than to identify prospective properties consumers may be interested in purchasing. IMLS does not assume any liability for missing or inaccurate data. Information provided by IMLS is deemed reliable but not guaranteed.

Listing information last updated on October 12th, 2025 at 12:18am MDT