

\$550,459 - 1880 W Judith Lane #220, Boise

MLS® #98936423

\$550,459

Bedroom, Bathroom, 1,841 sqft
Commercial Sale on 0.35 Acres

N/A, Boise, ID

Class A Office Condo: Premium 1,841 SF space in Southeast Boise's View Pointe Business Park Move-In Ready: Fully furnished, ideal for general office or medical use Flexible Layout: Includes reception area, 2 private offices, conference room, open cube area, and storage/IT room Prime Location: Professional neighbors and access to top service providers. Ample Parking: Convenient on-site parking for employees and clients. Please see marketing brochure in documents attached for more information.

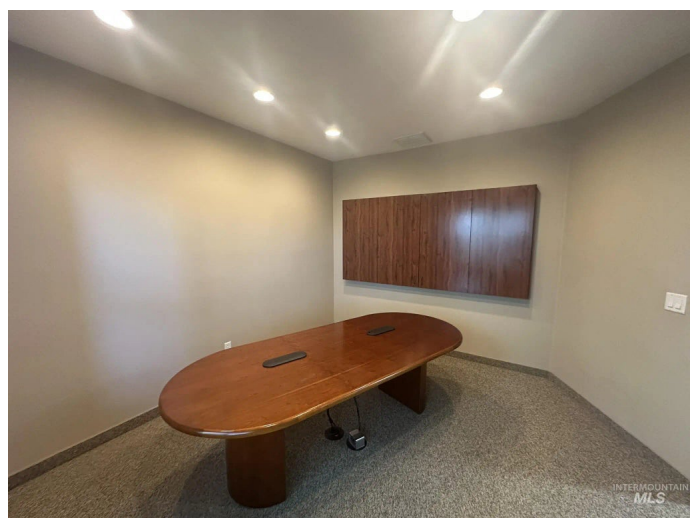
Built in 2008

Essential Information

MLS® #	98936423
Price Per SQFT	\$299
Square Footage	1,841
Acres	0.35
Year Built	2008
Type	Commercial Sale
Status	Active

Community Information

Address	1880 W Judith Lane #220
Area	Boise Bench - 0400
Subdivision	N/A
City	Boise
County	Ada
State	ID



Zip Code 83705

Amenities

Utilities Natural Gas Available

Parking Parking Facility

Golf Course N

Interior

Cooling Central Air

of Stories 2

Exterior

Lot Description 10000 SF - .49 Acre

Additional Information

Date Listed February 19th, 2025

Days on Market 91

Zoning MX-3

Office TOK Commercial

Contact Info info@TOKcommercial.com

Listing Details

Listing Office TOK Commercial



IDX information is provided exclusively for consumers' personal, non-commercial use, and may not be used for any purpose other than to identify prospective properties consumers may be interested in purchasing. IMLS does not assume any liability for missing or inaccurate data. Information provided by IMLS is deemed reliable but not guaranteed.

Listing information last updated on November 3rd, 2025 at 12:18am MST